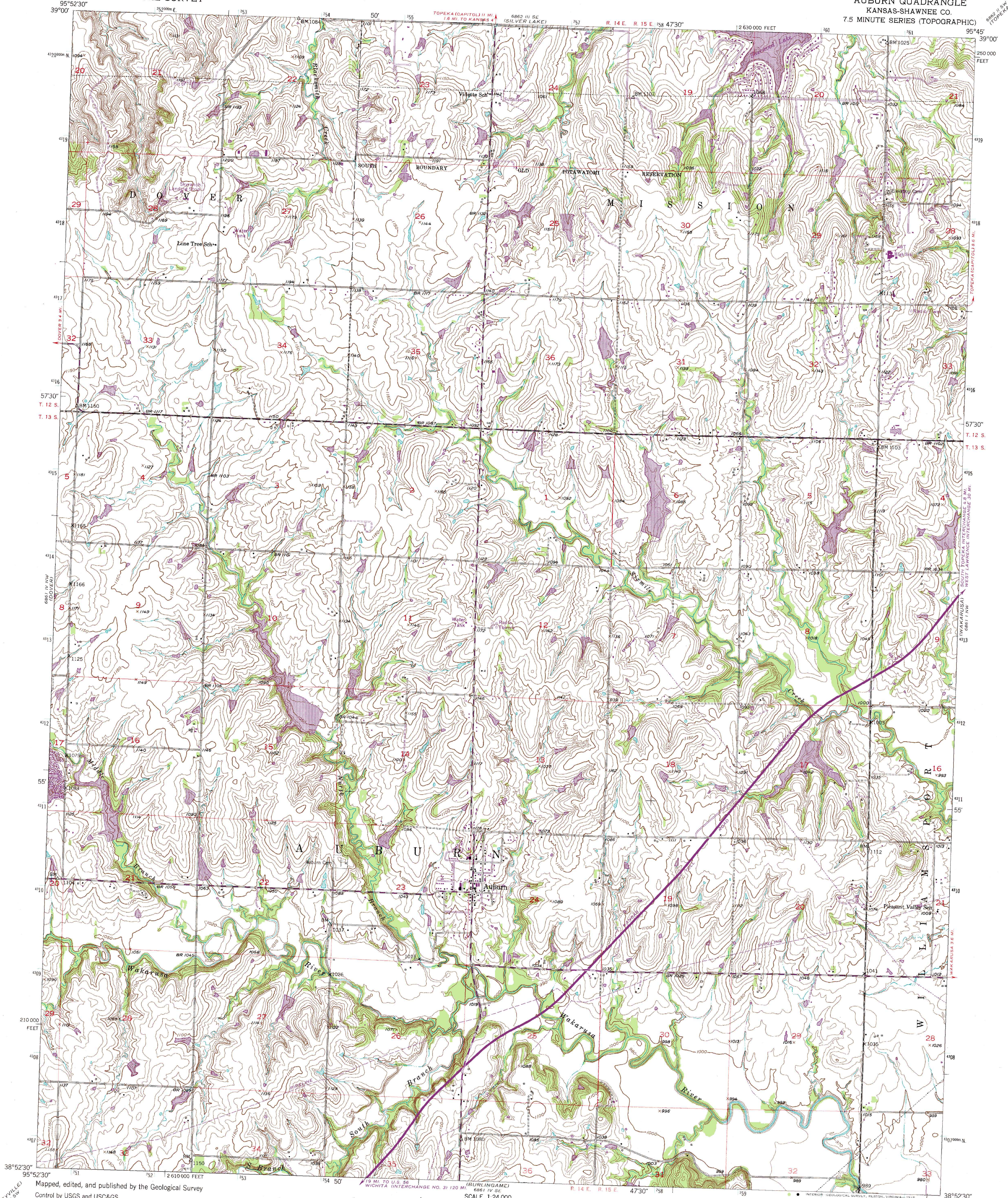
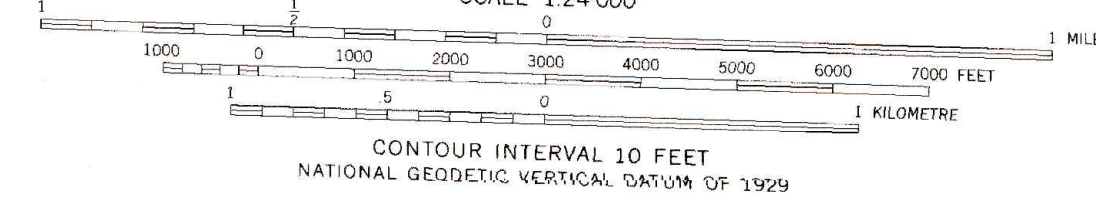
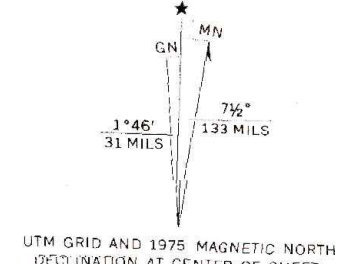


UNITED STATES  
DEPARTMENT OF THE INTERIOR  
GEOLOGICAL SURVEY

AUBURN QUADRANGLE  
KANSAS-SHAWNEE CO.  
7.5 MINUTE SERIES (TOPOGRAPHIC)



Mapped, edited, and published by the Geological Survey  
Control by USGS and USC&GS  
Topography from aerial photographs by Kelsh plotter  
Aerial photographs taken 1948. Field check 1952  
Polyconic projection. 1927 North American datum  
10,000-foot grid based on Kansas coordinate system, north zone  
1000-metre Universal Transverse Mercator grid ticks,  
zone 15, shown in blue  
Dotted land lines by Bureau of Indian Affairs  
indicate approximate location  
Revisions shown in purple compiled from aerial photographs  
taken 1970 and 1975. This information not field checked



ROAD CLASSIFICATION  
Heavy-duty 4 LANE ROAD Light-duty 2 LANE ROAD  
Medium-duty 2 LANE ROAD Unimproved dirt  
U. S. Route State Route  
Interstate Route

AUBURN, KANS.  
N3852.5-W9545/7.5

1952  
PHOTOREVISED 1970 AND 1975  
AMS 6861 IV NE SERIES V878