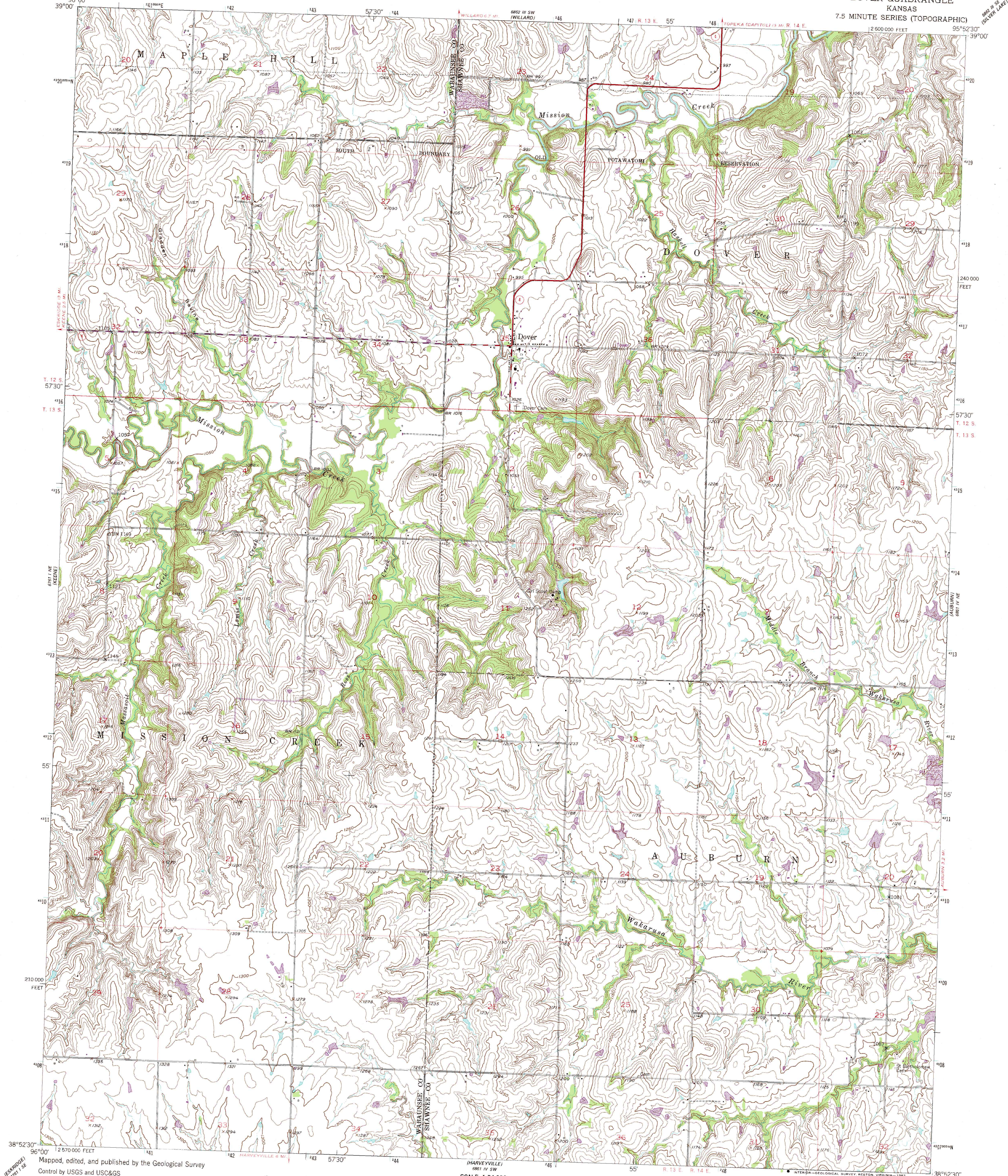


UNITED STATES
DEPARTMENT OF THE INTERIOR
GEOLOGICAL SURVEY

DOVER QUADRANGLE
KANSAS
7.5 MINUTE SERIES (TOPOGRAPHIC)



Maped, edited, and published by the Geological Survey
Control by USGS and USC&GS
Topography from aerial photographs by Kelsh plotter
Aerial photographs taken 1948. Field checked 1952
Polyconic projection. 1927 North American datum
10,000-foot grid based on Kansas coordinate system,
north zone
Dotted land lines by Bureau of Indian Affairs
indicate approximate location
1000-meter Universal Transverse Mercator grid ticks,
zone 15, shown in blue
To place on the predicted North American Datum 1983
move the projection lines 2 meters north and
24 meters east as shown by dashed corner ticks

UTM GRID AND 1982 MAGNETIC NORTH
DECLINATION AT CENTER OF SHEET

SCALE 1:24 000
1 000 000 2000 3000 4000 5000 6000 7000 FEET
1 KILOMETER
CONTOUR INTERVAL 10 FEET
NATIONAL GEODETIC VERTICAL DATUM OF 1929

THIS MAP COMPLIES WITH NATIONAL MAP ACCURACY STANDARDS
FOR SALE BY U. S. GEOLOGICAL SURVEY, DENVER, COLORADO 80225 OR RESTON, VIRGINIA 22092
AND STATE GEOLOGICAL SURVEY, LAWRENCE, KANSAS 66044
A FOLDER DESCRIBING TOPOGRAPHIC MAPS AND SYMBOLS IS AVAILABLE ON REQUEST

Revisions shown in purple compiled from aerial
photographs taken 1981 and other sources
This information not field checked. Map edited 1982

ROAD CLASSIFICATION
Heavy-duty 4-LANE 16-LEANE Light-duty
Medium-duty 2-LANE 4-LANE Unimproved dirt
U. S. Route State Route



DOVER, KANS.
N3852.5-W9552.5/7.5

1952
PHOTOREVISED 1982
DMA 6861 IV NW-SERIES 1878