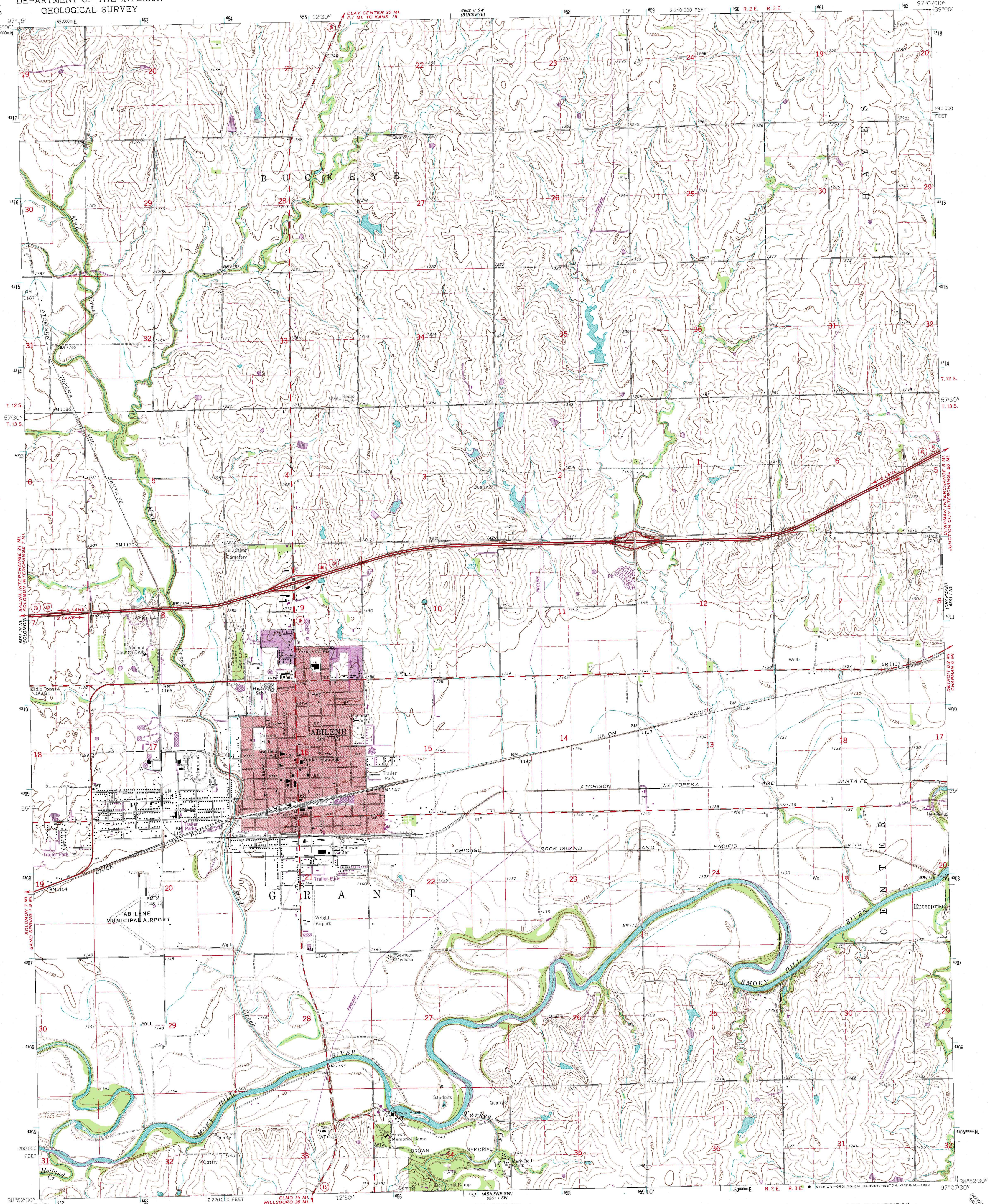
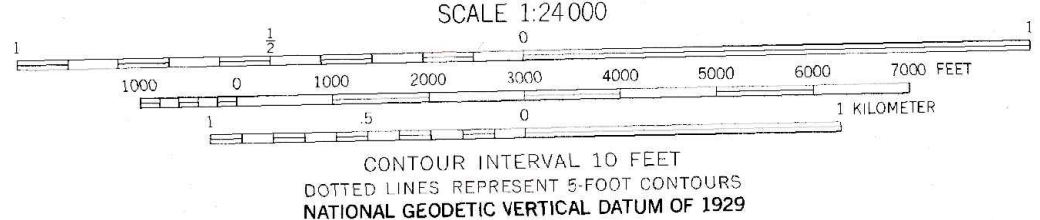
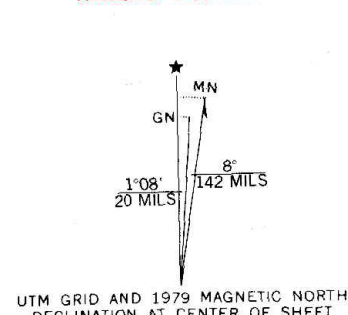


UNITED STATES
DEPARTMENT OF THE INTERIOR
GEOLOGICAL SURVEY

ABILENE QUADRANGLE
KANSAS-DICKINSON CO.
7.5 MINUTE SERIES (TOPOGRAPHIC)



Mapped, edited, and published by the Geological Survey
Control by USGS and USC&GS
Topography by photogrammetric methods from aerial
photographs taken 1959. Field checked 1964
Polyconic projection. 1927 North American datum
10,000-foot grid based on Kansas coordinate system, north zone
1000-meter Universal Transverse Mercator grid ticks,
zone 14, shown in blue
To place on the predicted North American Datum 1983
move the projection lines 2 meters north and
27 meters east as shown by dashed corner ticks
Red tint indicates area in which only landmark buildings are shown
Fine red dashed lines indicate selected fence and field lines where
generally visible on aerial photographs. This information is unchecked



THIS MAP COMPLIES WITH NATIONAL MAP ACCURACY STANDARDS
FOR SALE BY U.S. GEOLOGICAL SURVEY, DENVER, COLORADO 80225, OR RESTON, VIRGINIA 22092
AND STATE GEOLOGICAL SURVEY, LAWRENCE, KANSAS 66044
A FOLDER DESCRIBING TOPOGRAPHIC MAPS AND SYMBOLS IS AVAILABLE ON REQUEST

ROAD CLASSIFICATION
Heavy-duty ——— Light-duty ———
Medium-duty ——— Unimproved dirt ———
Interstate Route U.S. Route State Route
ABILENE, KANS.
N3852.5-W9707.5/7.5
1964
PHOTOREVISED 1979
DMA 6561 1 NW-SERIES V878
Revisions shown in purple compiled in cooperation
with State of Kansas agencies from aerial
photographs taken 1978. Map edited 1979
This information not field checked
Purple tint indicates extension of urban areas