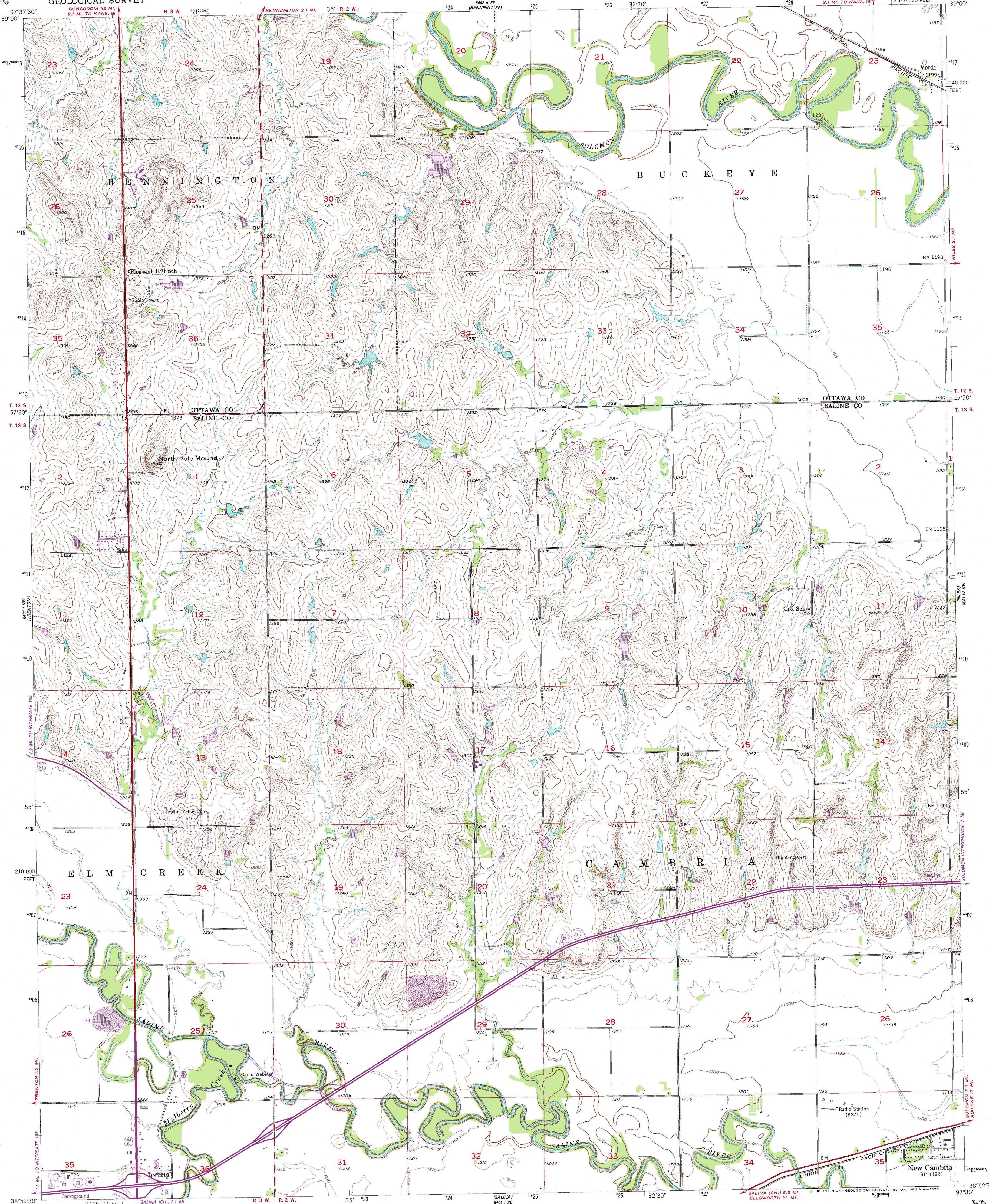
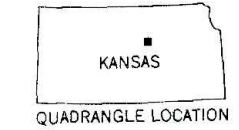
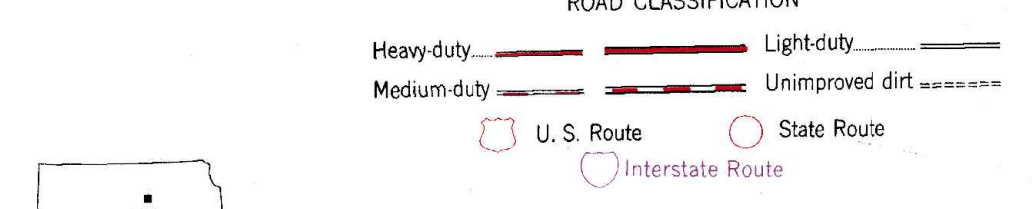
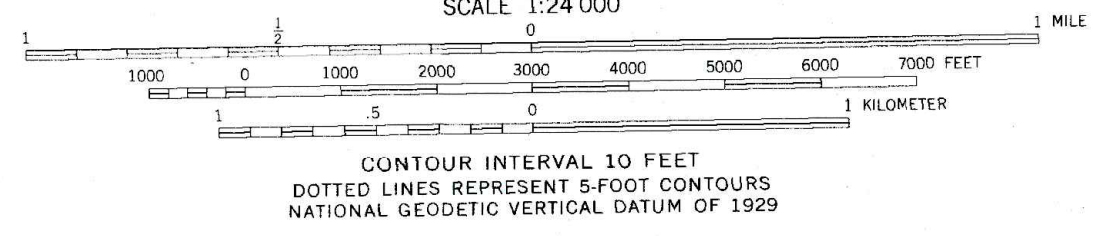
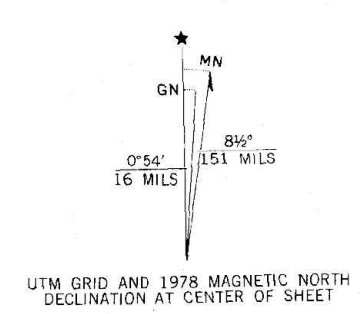


UNITED STATES  
DEPARTMENT OF THE INTERIOR  
GEOLOGICAL SURVEY

NEW CAMBRIA QUADRANGLE  
KANSAS  
7.5 MINUTE SERIES (TOPOGRAPHIC)



Maped, edited and published by the Geological Survey  
Control by USGS and USC&GS  
Topography from aerial photographs by Kelsch plotter  
Aerial photographs taken 1954. Field check 1955  
Polyconic projection. 1927 North American datum  
10,000-foot grid based on Kansas coordinate system,  
north zone  
1000-meter Universal Transverse Mercator grid ticks,  
zone 14, shown in blue  
Revisions shown in purple compiled from aerial photographs taken  
1977. Map edited 1978. This information not field checked



NEW CAMBRIA, KANS.  
N3852.5-W9730.7.5  
1955  
PHOTOREVISED 1978  
AMS 6481 1 NE-SERIES V878

THIS MAP COMPLIES WITH NATIONAL MAP ACCURACY STANDARDS  
FOR SALE BY U.S. GEOLOGICAL SURVEY, DENVER, COLORADO 80225, OR RESTON, VIRGINIA 22092  
AND STATE GEOLOGICAL SURVEY, LAWRENCE, KANSAS 66044  
A FOLDER DESCRIBING TOPOGRAPHIC MAPS AND SYMBOLS IS AVAILABLE ON REQUEST