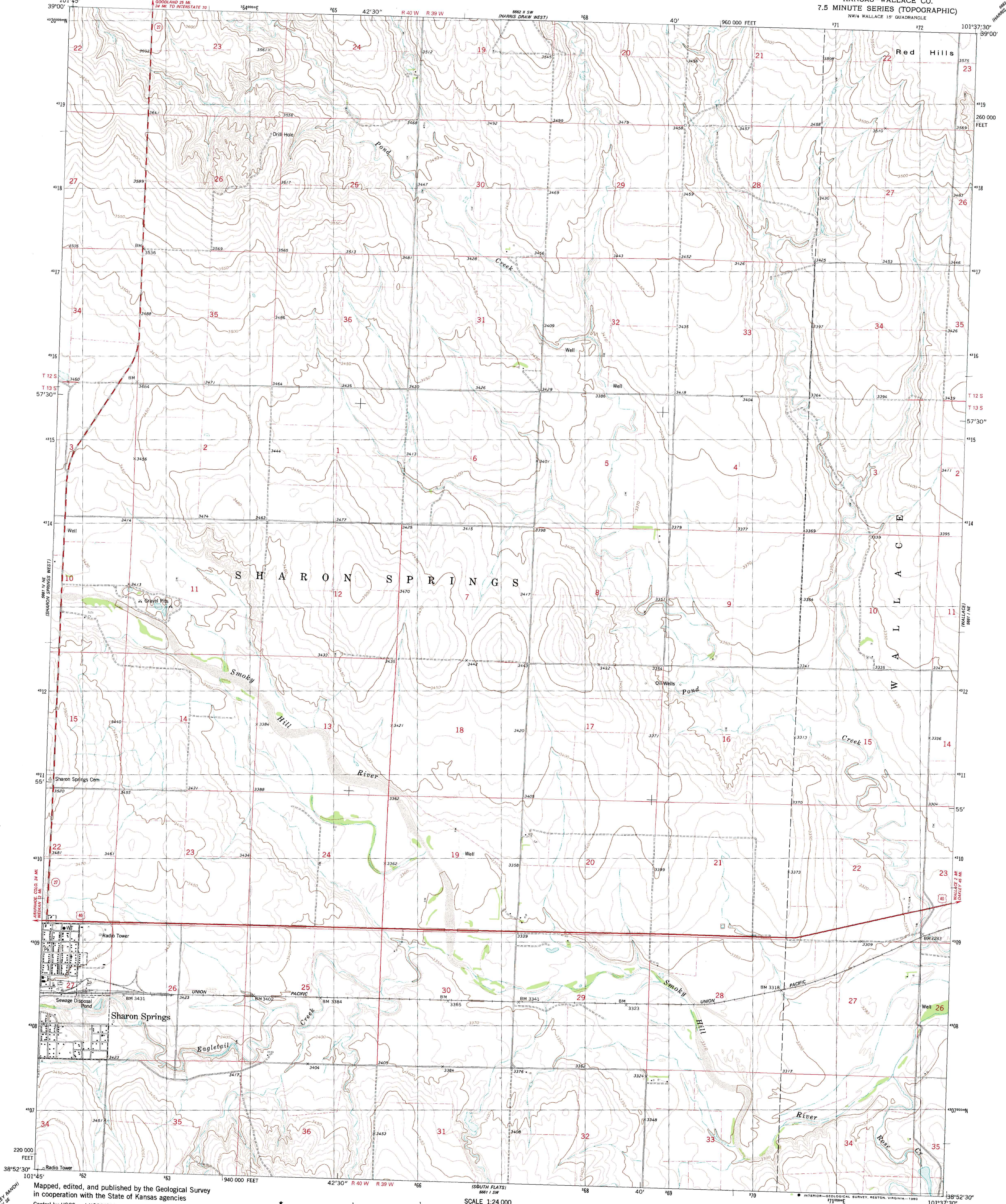
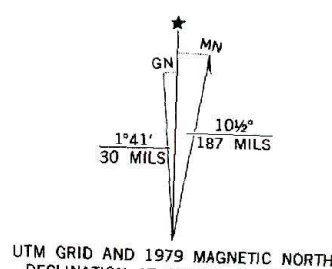


UNITED STATES
DEPARTMENT OF THE INTERIOR
GEOLOGICAL SURVEY

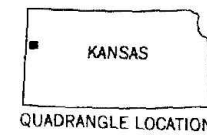
SHARON SPRINGS EAST QUADRANGLE
KANSAS-WALLACE CO.
7.5 MINUTE SERIES (TOPOGRAPHIC)
NW 1/4 WALLACE 15' QUADRANGLE



Mapped, edited, and published by the Geological Survey
in cooperation with the State of Kansas agencies
Control by USGS and NOS/NOAA
Topography by photogrammetric methods from aerial photographs
taken 1957. Revised from aerial photographs taken 1977
Field checked 1978. Map edited 1979
Projection and 10,000-foot grid ticks: Kansas coordinate
system, north zone (Lambert conformal conic)
1000-meter Universal Transverse Mercator grid, zone 14
1927 North American datum
To place on the predicted North American Datum 1983
move the projection lines 3 meters north and
39 meters east as shown by dashed corner ticks
Fine red dashed lines indicate selected fence and field lines where
generally visible on aerial photographs. This information is unchecked



SCALE 1:24 000
1 000 2000 3000 4000 5000 6000 7000 FEET
1 KILOMETER
CONTOUR INTERVAL 10 FEET
NATIONAL GEODETIC VERTICAL DATUM OF 1929



ROAD CLASSIFICATION
Primary highway, hard surface
Secondary highway, hard surface
Unimproved road
Interstate Route
U.S. Route
State Route

SHARON SPRINGS EAST, KANS.
NW 1/4 WALLACE 15' QUADRANGLE
N3852.5-W10137.5/7.5

1979
DMA 5661 I NW-SERIES V878