

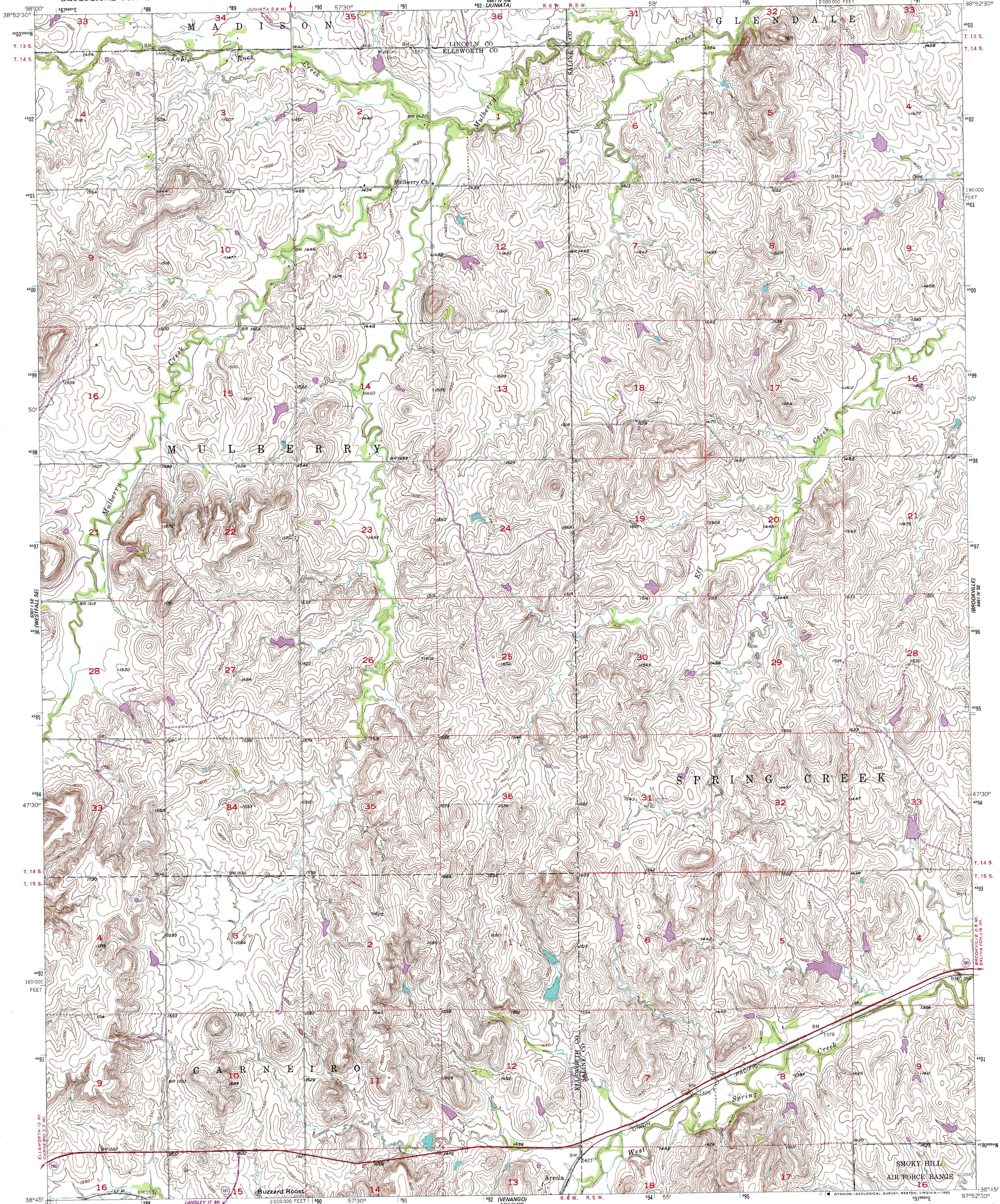
WEST HALF

UNITED STATES
DEPARTMENT OF THE INTERIOR
GEOLOGICAL SURVEY

STATE OF KANSAS

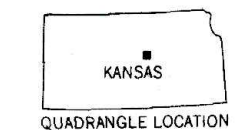
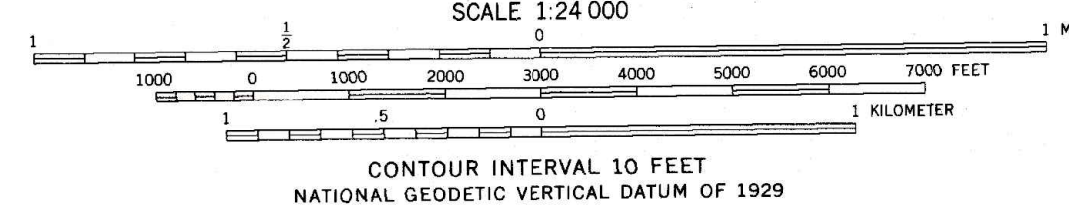
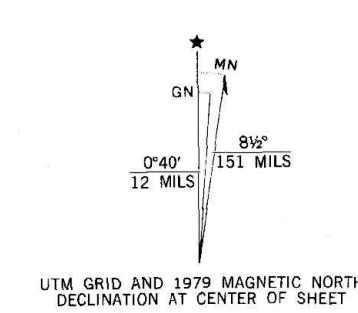
BROOKVILLE SW QUADRANGLE
KANSAS
7.5 MINUTE SERIES (TOPOGRAPHIC)

EAST HALF



CARVER

Mapped, edited, and published by the Geological Survey
in cooperation with State of Kansas agencies
Control by USGS and USC&GS
Topography from aerial photographs by Kesh plotter
Aerial photographs taken 1956. Field check 1957
Polyconic projection. 1927 North American datum
10,000-foot grid based on Kansas coordinate system, north zone
1000-meter Universal Transverse Mercator grid ticks,
zone 14, shown in blue
To place on the predicted North American Datum 1983
move the projection lines 2 meters north and
28 meters east as shown by dashed corner ticks
There may be private inholdings within the boundaries of
the National or State reservations shown on this map



ROAD CLASSIFICATION
Heavy-duty ——— Light-duty ———
Medium-duty ——— Unimproved dirt ———
U.S. Route ——— State Route ———

THIS MAP COMPLIES WITH NATIONAL MAP ACCURACY STANDARDS
FOR SALE BY U. S. GEOLOGICAL SURVEY, DENVER, COLORADO 80225, OR RESTON, VIRGINIA 22092
AND STATE GEOLOGICAL SURVEY, LAWRENCE, KANSAS 66044
A FOLDER DESCRIBING TOPOGRAPHIC MAPS AND SYMBOLS IS AVAILABLE ON REQUEST

Revisions shown in purple compiled in cooperation
with State of Kansas agencies from aerial
photographs taken 1978. Map edited 1979
This information not field checked

BROOKVILLE SW, KANS.
N 3845—W 9752.5/7.5
1957
PHOTOREVISED 1979
DMA 6461 IV SW—SERIES V878