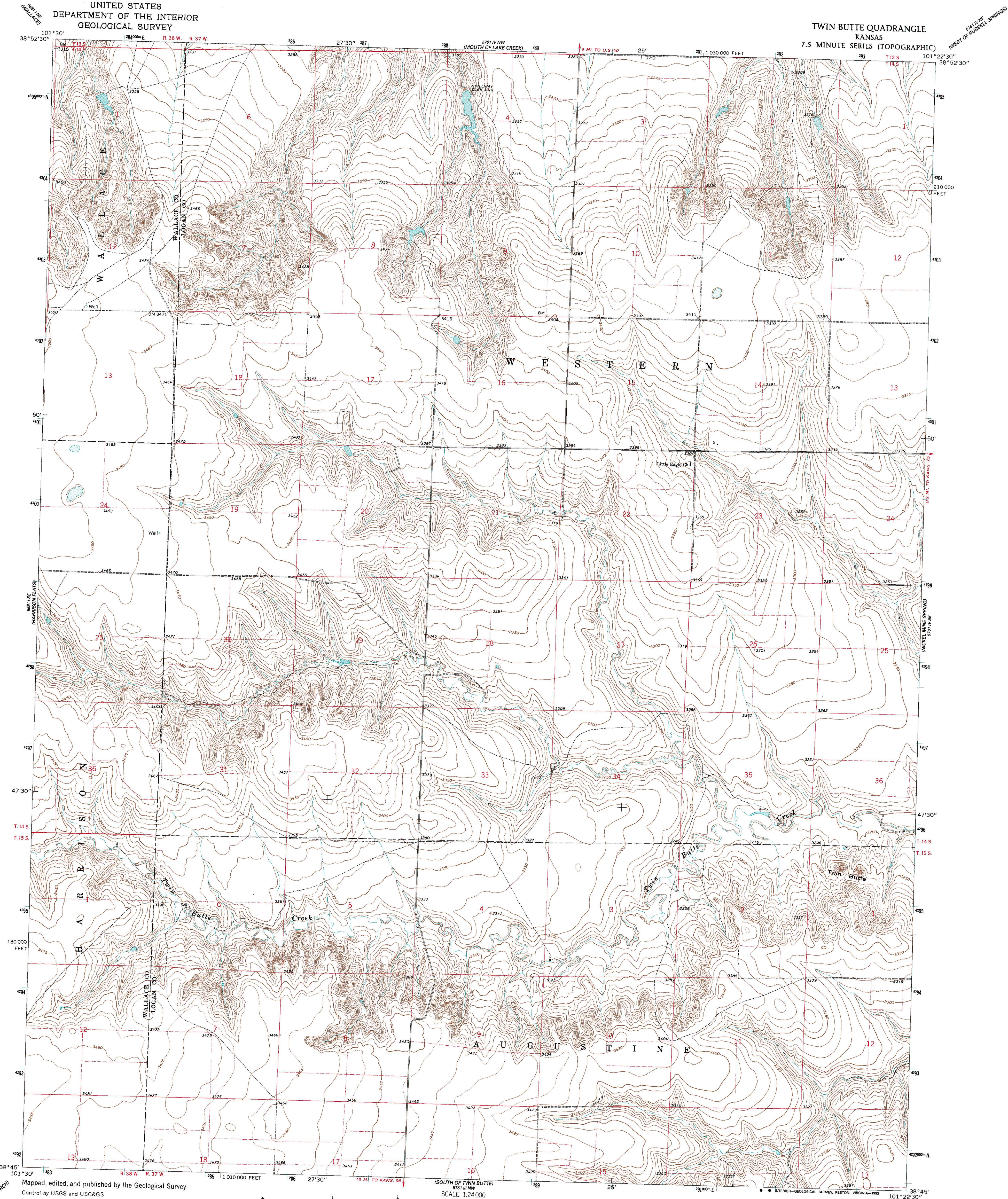


UNITED STATES
DEPARTMENT OF THE INTERIOR
GEOLOGICAL SURVEY

TWIN BUTTE QUADRANGLE
KANSAS
7.5 MINUTE SERIES (TOPOGRAPHIC)



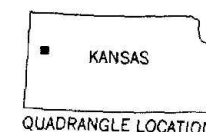
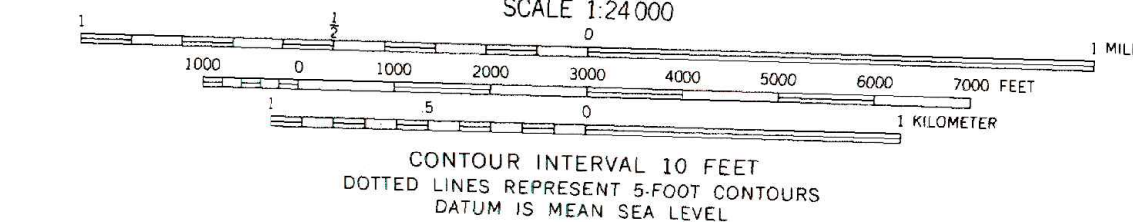
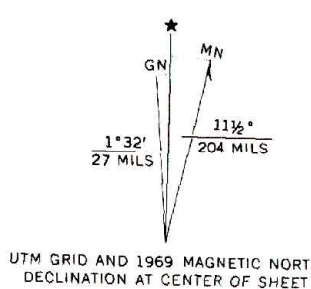
Mapped, edited, and published by the Geological Survey

Control by USGS and USC&GS

Topography by photogrammetric methods from aerial photographs taken 1966. Field checked 1969

Polyconic projection. 1927 North American datum 10,000-foot grid based on Kansas coordinate system, north zone 1000-meter Universal Transverse Mercator grid ticks, zone 14, shown in blue

Fine red dashed lines indicate selected fence and field lines where generally visible on aerial photographs. This information is unchecked



ROAD CLASSIFICATION
Light-duty road, all weather, improved surface. Unimproved road, fair or dry weather

THIS MAP COMPLIES WITH NATIONAL MAP ACCURACY STANDARDS
FOR SALE BY U.S. GEOLOGICAL SURVEY, DENVER, COLORADO 80225, OR WASHINGTON, D. C. 20242
AND BY THE STATE GEOLOGICAL SURVEY, LAWRENCE, KANSAS 66044
A FOLDER DESCRIBING TOPOGRAPHIC MAPS AND SYMBOLS IS AVAILABLE ON REQUEST

TWIN BUTTE, KANS.
(FORMERLY RUSSELL SPRINGS 2 SW)
38101-G4-TF-024

1969

DMA 5761 IV SW-SERIES V878