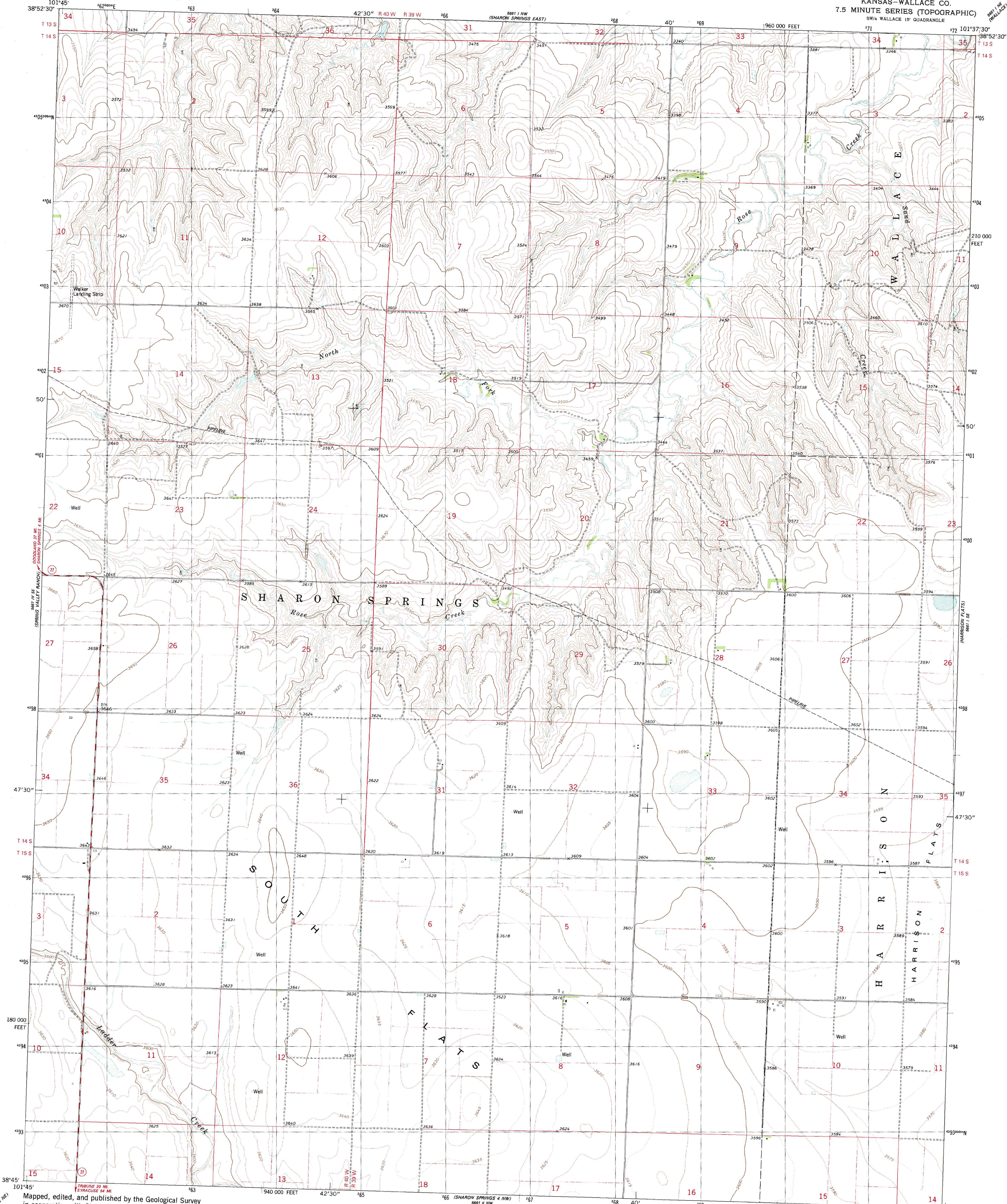


UNITED STATES
DEPARTMENT OF THE INTERIOR
GEOLOGICAL SURVEY

SOUTH FLATS QUADRANGLE
KANSAS-WALLACE CO.
7.5 MINUTE SERIES (TOPOGRAPHIC)
SW/4 WALLACE 15' QUADRANGLE

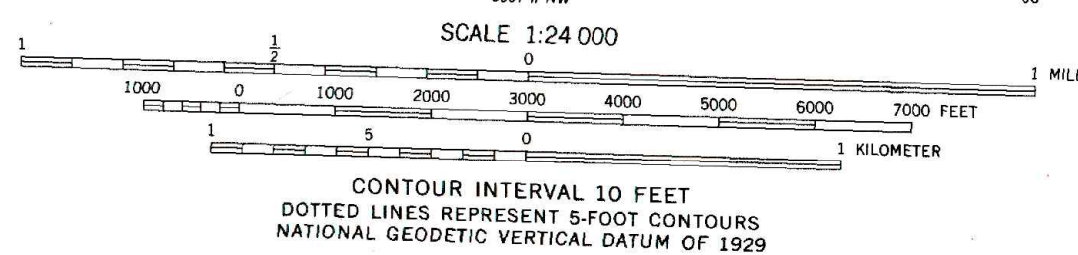
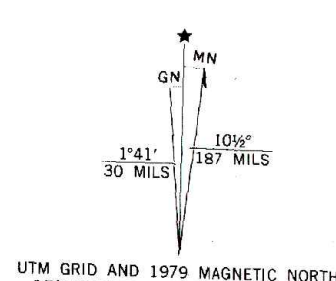


Mapped, edited, and published by the Geological Survey
in cooperation with State of Kansas agencies
Control by USGS and NOS/NOAA

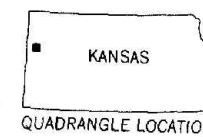
Topography by photogrammetric methods from aerial photographs
taken 1957. Revised from aerial photographs taken 1977
Field checked 1978. Map edited 1979

Projection and 10,000-foot grid ticks: Kansas coordinate
system, north zone (Lambert conformal conic)
1000-meter Universal Transverse Mercator grid, zone 14
1927 North American datum
To place on the predicted North American Datum 1983
move the projection lines 3 meters north and
39 meters east as shown by dashed corner ticks

Fine red dashed lines indicate selected fence and field lines where
generally visible on aerial photographs. This information is unchecked



THIS MAP COMPLIES WITH NATIONAL MAP ACCURACY STANDARDS
FOR SALE BY U.S. GEOLOGICAL SURVEY, DENVER, COLORADO 80225, OR RESTON, VIRGINIA 22092
AND STATE GEOLOGICAL SURVEY, LAWRENCE, KANSAS 66044
A FOLDER DESCRIBING TOPOGRAPHIC MAPS AND SYMBOLS IS AVAILABLE ON REQUEST



ROAD CLASSIFICATION
Primary highway, hard surface
Secondary highway, hard surface
Unimproved road
Interstate Route
U. S. Route
State Route

SOUTH FLATS, KANS.
SW/4 WALLACE 15' QUADRANGLE
N3845-W10137.5/7.5

1979

DMA 5601 | SW-SERIES V878