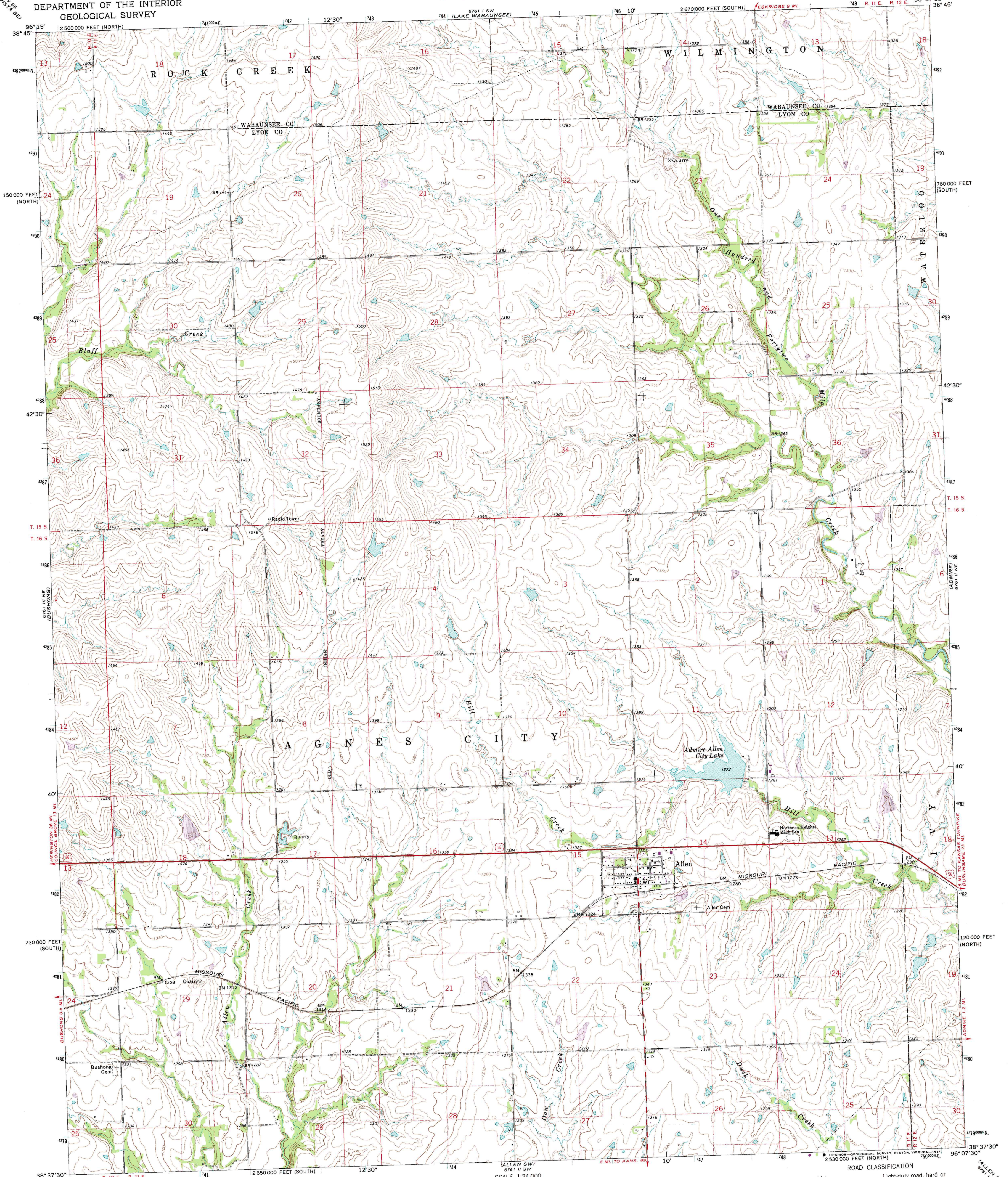


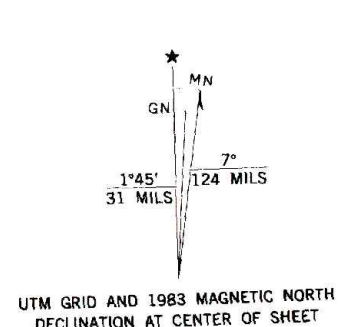
UNITED STATES  
DEPARTMENT OF THE INTERIOR  
GEOLOGICAL SURVEY

STATE OF KANSAS

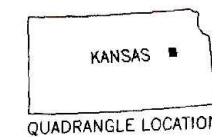
ALLEN QUADRANGLE  
KANSAS  
7.5 MINUTE SERIES (TOPOGRAPHIC)



Maped, edited, and published by the Geological Survey  
in cooperation with State of Kansas agencies  
Control by USGS and USC&GS  
Topography by photogrammetric methods from aerial  
photographs taken 1970. Field checked 1971  
Polyconic projection. 1927 North American datum  
10,000-foot grids based on Kansas coordinate system,  
south and north zones  
1000-meter Universal Transverse Mercator grid ticks,  
zone 14, shown in blue  
To place on the predicted North American Datum 1983,  
move the projection lines 2 meters north and  
24 meters east as shown by dashed corner ticks  
Revisions shown in purple compiled from aerial photographs taken 1982 and  
other sources. This information not field checked. Map edited 1983



THIS MAP COMPLIES WITH NATIONAL MAP ACCURACY STANDARDS  
FOR SALE BY U.S. GEOLOGICAL SURVEY, DENVER, COLORADO 80225, OR RESTON, VIRGINIA 22092  
AND KANSAS GEOLOGICAL SURVEY, LAWRENCE, KANSAS 66044  
A FOLDER DESCRIBING TOPOGRAPHIC MAPS AND SYMBOLS IS AVAILABLE ON REQUEST



ROAD CLASSIFICATION  
Primary highway, hard surface ——— Light-duty road, hard or improved surface  
Secondary highway, hard surface ——— Unimproved road  
Interstate Route ——— U.S. Route ——— State Route

ALLEN, KANS.  
38096-F2-TF-024  
1971  
PHOTOREVISED 1983  
DMA 6761 11 NW—SERIES V878