

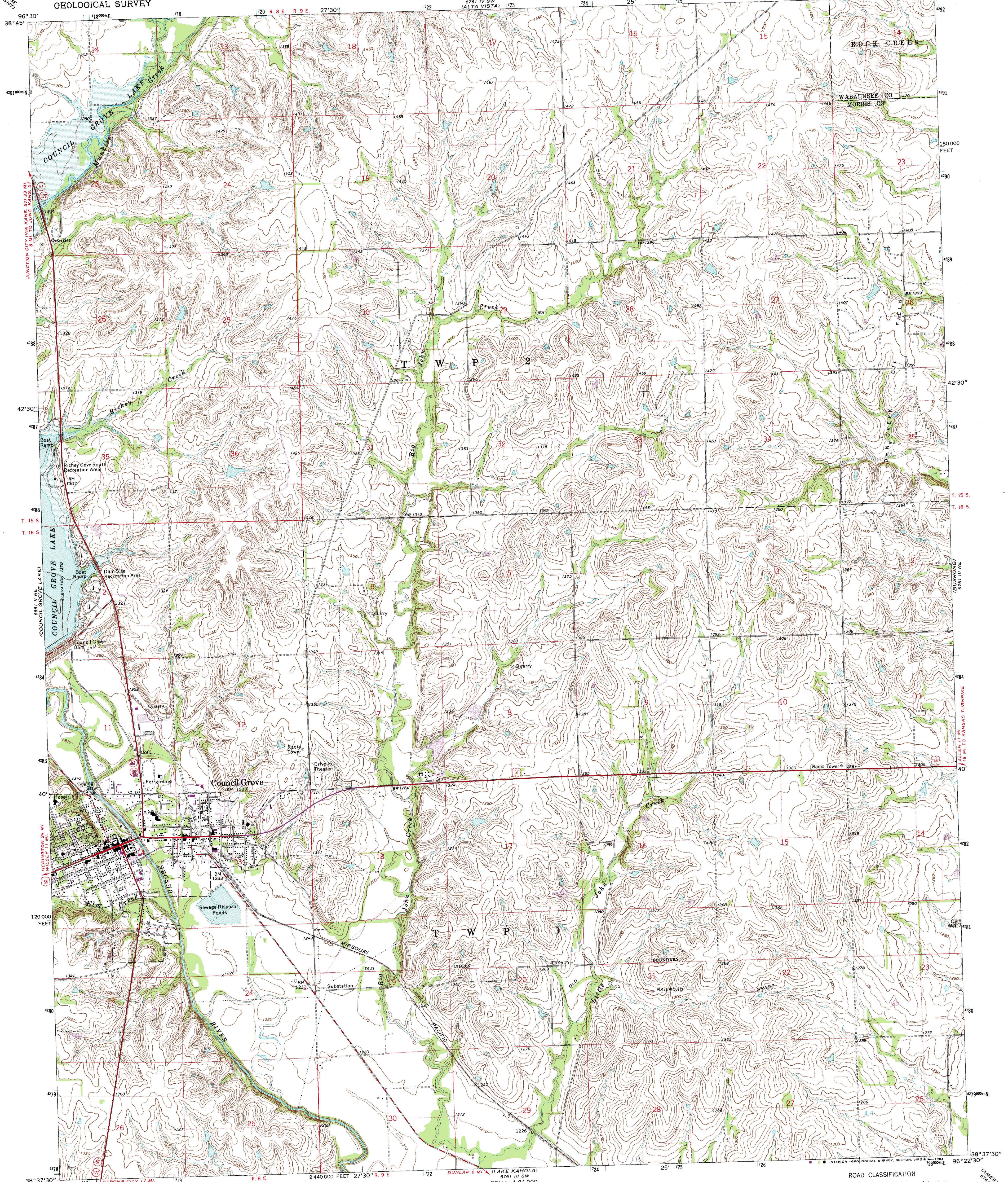
67° 58' 30" W
100° 00' 00" N

UNITED STATES
DEPARTMENT OF THE INTERIOR
GEOLOGICAL SURVEY

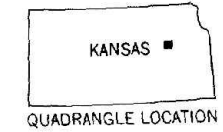
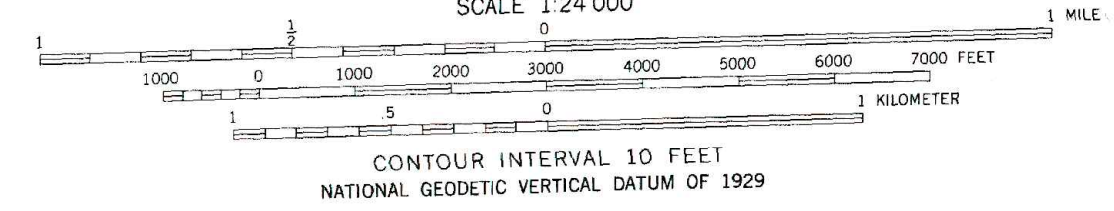
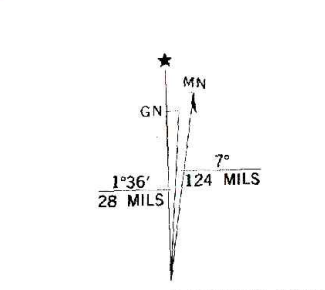
STATE OF KANSAS

COUNCIL GROVE QUADRANGLE
KANSAS
7.5 MINUTE SERIES (TOPOGRAPHIC)

67° 14' 55" W
100° 00' 00" N



Mapped, edited, and published by the Geological Survey
in cooperation with State of Kansas agencies
Control by USGS and USC&GS
Topography by photogrammetric methods from aerial
photographs taken 1970. Field checked 1971
Underwater contours in Council Grove Lake
from USCE maps dated 1944
Polyconic projection. 1927 North American datum
10,000-foot grid based on Kansas coordinate system, north zone
1000-meter Universal Transverse Mercator grid ticks,
zone 14, shown in blue
Areas covered by dashed light-blue pattern
are subject to controlled inundation
To place on the predicted North American Datum 1983,
move the projection lines 2 meters north and
25 meters east as shown by dashed corner ticks



ROAD CLASSIFICATION
Primary highway, hard surface ——— Light-duty road, hard or improved surface
Secondary highway, hard surface ——— Unimproved road
Interstate Route ——— U. S. Route ——— State Route

COUNCIL GROVE, KANS.
38096-F4-TF-024

Revisions shown in purple compiled from aerial
photographs taken 1982 and other sources.
This information not field checked. Map edited 1983

1971
PHOTO-REVISED 1983
DMA 6701 III NW—SERIES V878

THIS MAP COMPLIES WITH NATIONAL MAP ACCURACY STANDARDS
FOR SALE BY U. S. GEOLOGICAL SURVEY, DENVER, COLORADO 80225, OR RESTON, VIRGINIA 22092
AND KANSAS GEOLOGICAL SURVEY, LAWRENCE, KANSAS 66044
A FOLDER DESCRIBING TOPOGRAPHIC MAPS AND SYMBOLS IS AVAILABLE ON REQUEST