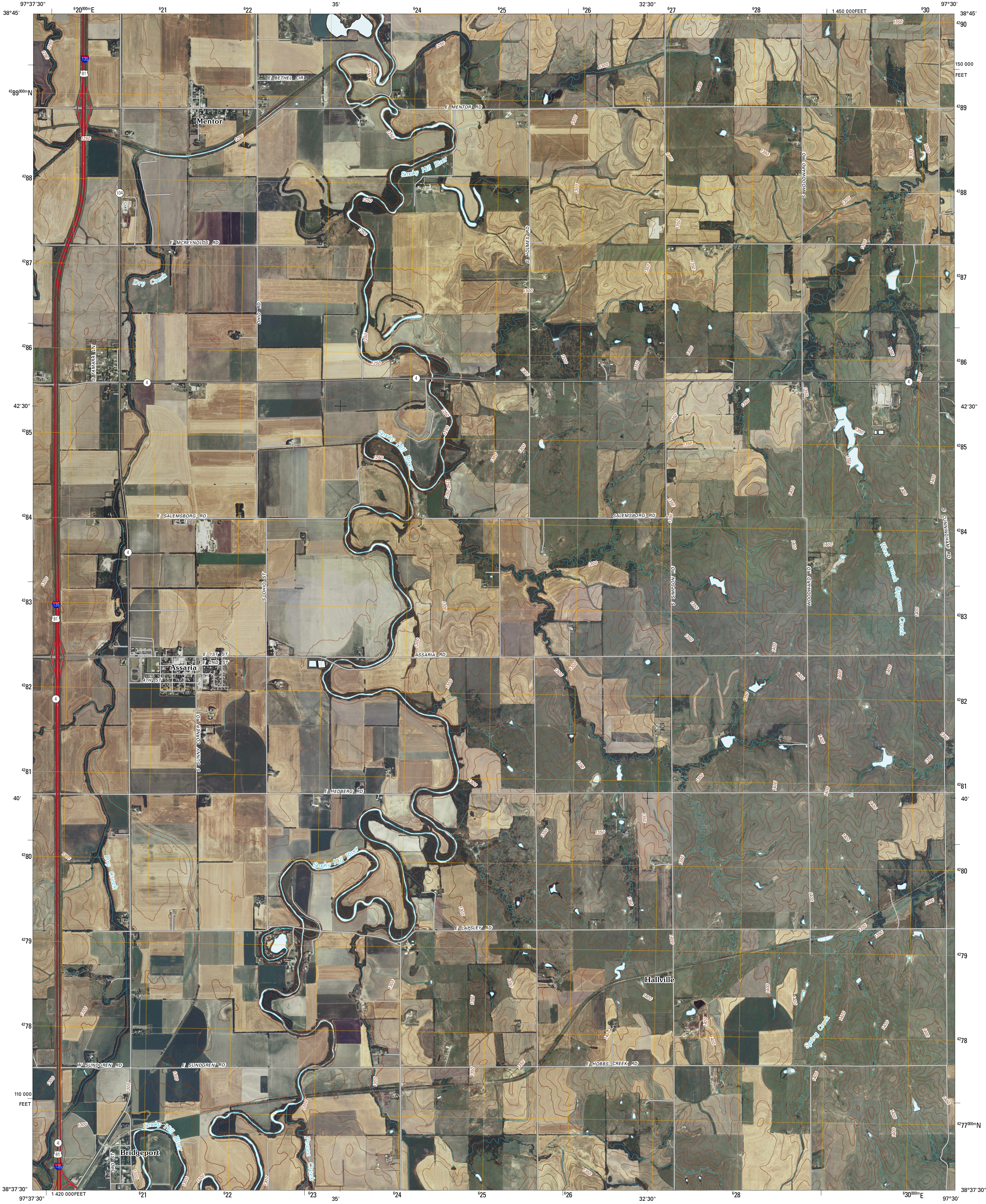




U.S. DEPARTMENT OF THE INTERIOR
U. S. GEOLOGICAL SURVEY

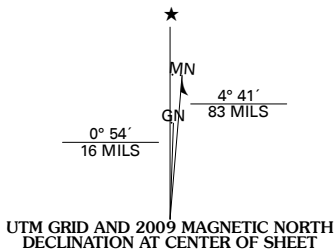


ASSARIA QUADRANGLE
KANSAS
7.5-MINUTE SERIES

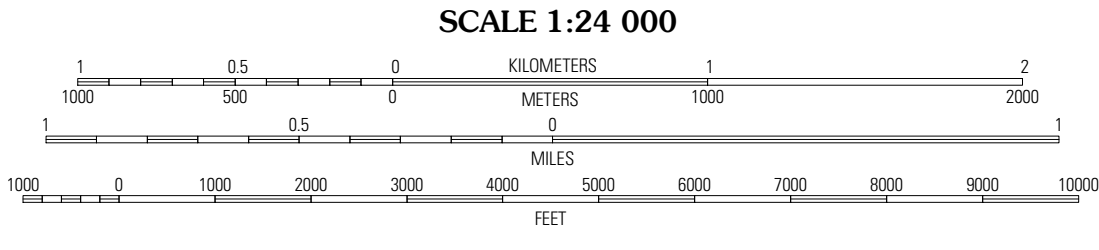


Produced by the United States Geological Survey
North American Datum of 1983 (NAD83)
World Geodetic System of 1984 (WGS84). Projection and
1 000-meter grid: Universal Transverse Mercator, Zone 14S
10 000-foot ticks: Kansas Coordinate System of 1983
(north zone)

Imagery.....NAP, July 2008
Roads.....National Transportation Dataset, 2008
Names.....GNIS, 2008
Hydrography.....National Hydrography Dataset, 2008
Contours.....National Elevation Dataset, 2003

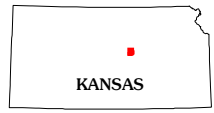


U.S. National Grid
100,000-m Square ID
PH
Grid Zone Designation
14S



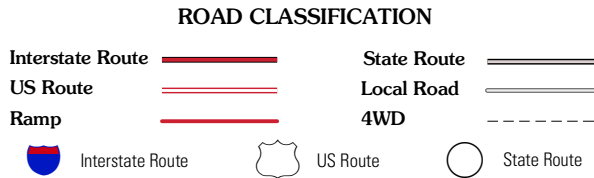
CONTOUR INTERVAL 10 FEET

This map was produced to conform with version 0.5.10 of the
draft USGS Standards for 7.5-Minute Quadrangle Maps.
A metadata file associated with this product is also draft version 0.5.10



Salina SW	Salina	Kipp
Smolan	Assaria	Gypsum
Lindsborg	Lindsborg SE	Roxbury

ADJOINING 7.5' QUADRANGLES



ASSARIA, KS
2009