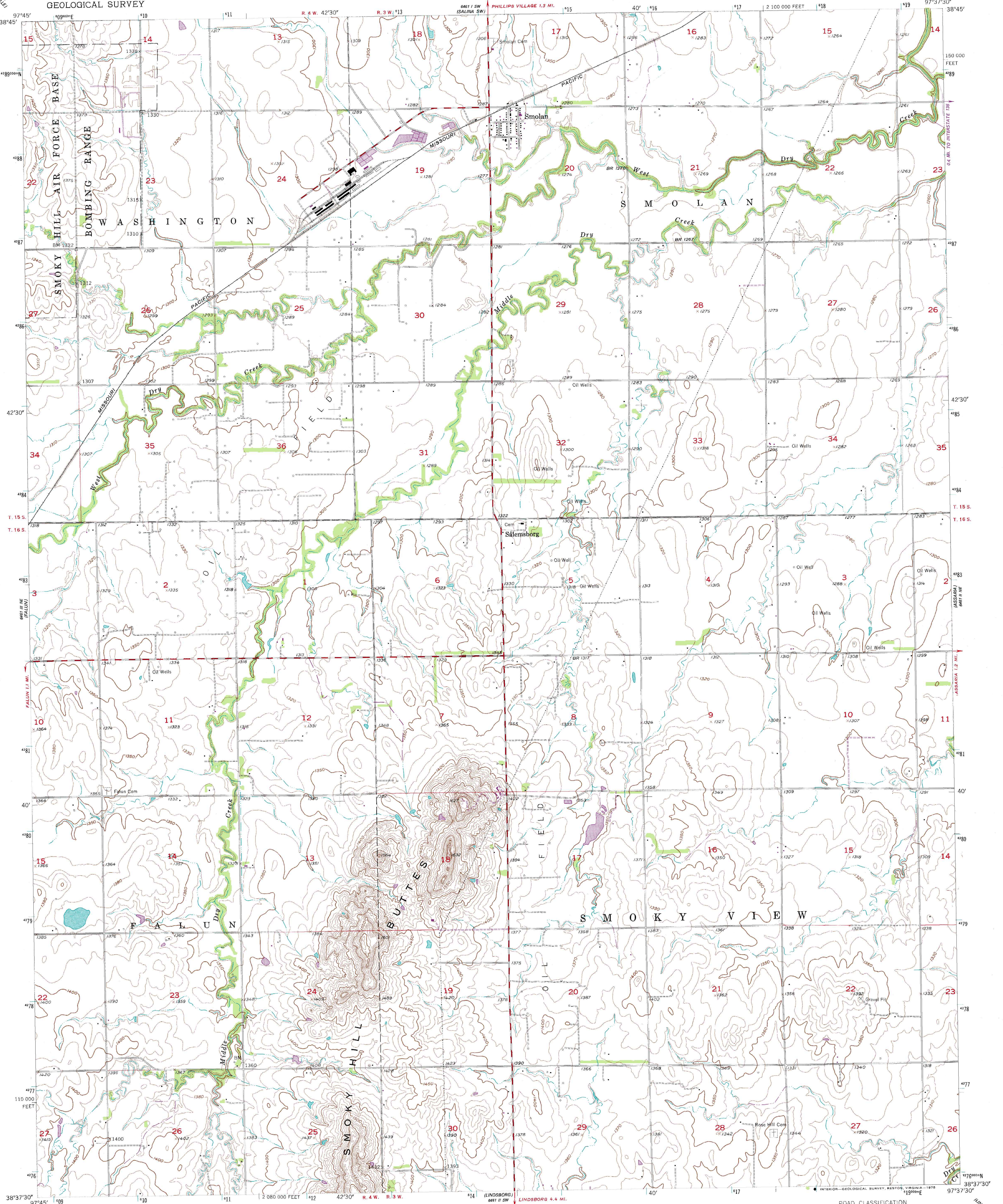


UNITED STATES
DEPARTMENT OF THE INTERIOR
GEOLOGICAL SURVEY

SMOLAN QUADRANGLE
KANSAS-SALINE CO.
7.5 MINUTE SERIES (TOPOGRAPHIC)



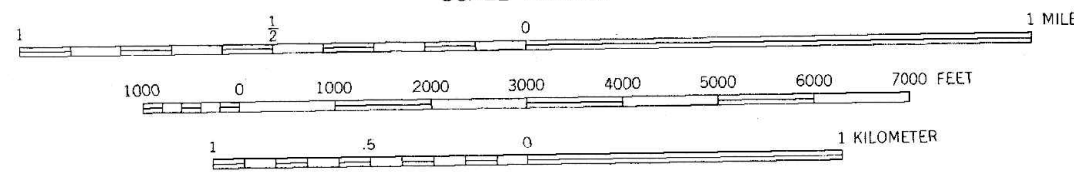
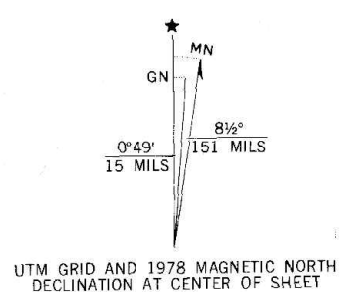
Maped, edited, and published by the Geological Survey
Control by USGS and USC&GS

Topography from aerial photographs by Kelsh plotter
Aerial photographs taken 1954. Field check 1955

Polyconic projection. 1927 North American datum
10,000-foot grid based on Kansas coordinate system,
north zone

1000-meter Universal Transverse Mercator grid ticks,
zone 14, shown in blue

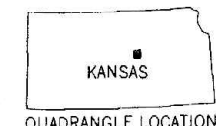
Revisions shown in purple compiled from aerial photographs taken
1977. Map edited 1978. This information not field checked



CONTOUR INTERVAL 10 FEET
NATIONAL GEODETIC VERTICAL DATUM OF 1929

THIS MAP COMPLIES WITH NATIONAL MAP ACCURACY STANDARDS
FOR SALE BY U. S. GEOLOGICAL SURVEY, DENVER, COLORADO 80225, OR RESTON, VIRGINIA 22092
AND STATE GEOLOGICAL SURVEY, LAWRENCE, KANSAS 66044
A FOLDER DESCRIBING TOPOGRAPHIC MAPS AND SYMBOLS IS AVAILABLE ON REQUEST

ROAD CLASSIFICATION	
Primary highway, hard surface	Light-duty road, hard or improved surface
Secondary highway, hard surface	Unimproved road
Interstate Route	U. S. Route
	State Route



SMOLAN, KANS.
N3837.5-W9737.5/7.5

1955
PHOTOREVISED 1978
AMS 6461 II NW-SERIES V878