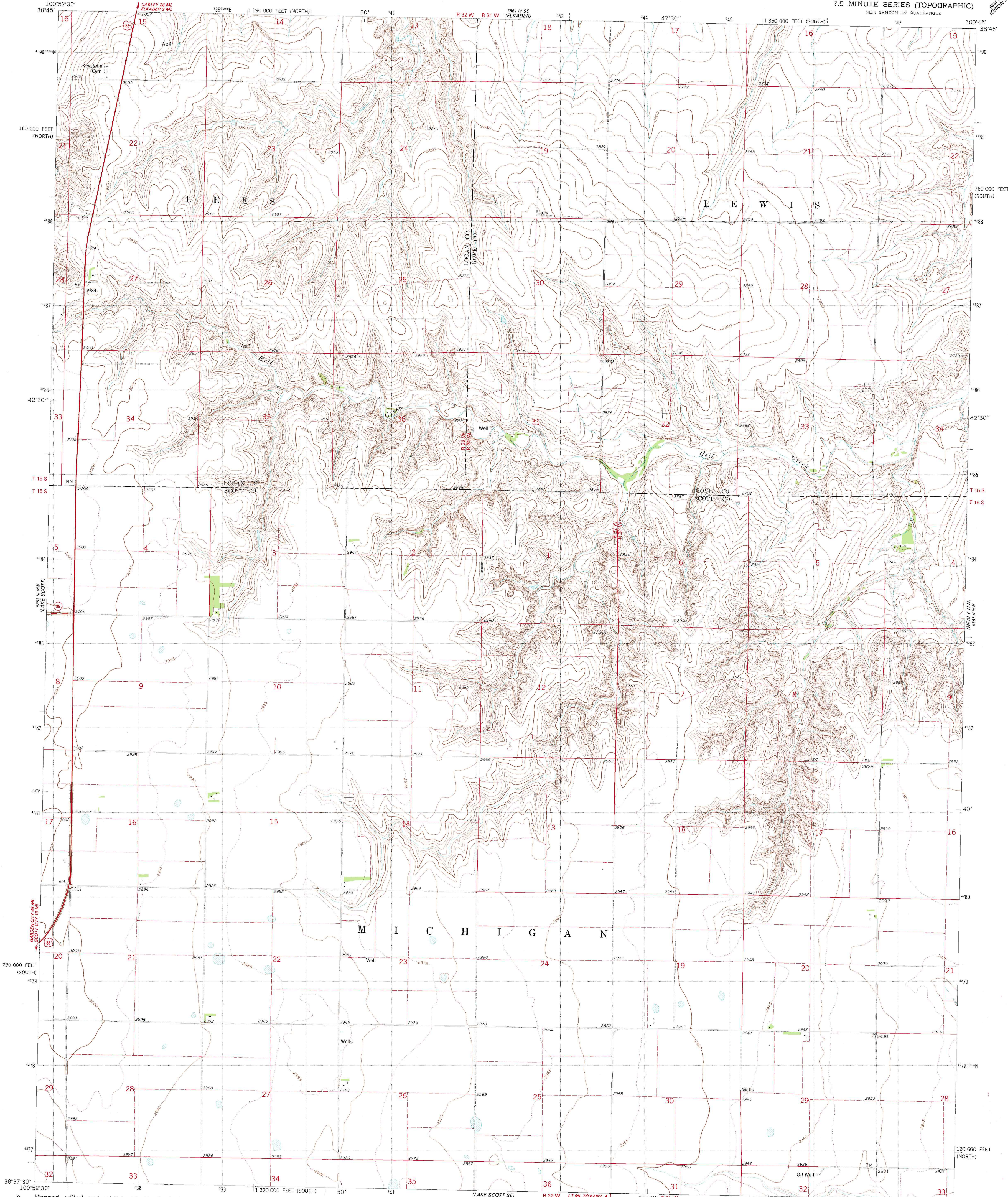


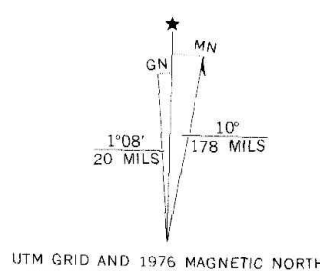
UNITED STATES
DEPARTMENT OF THE INTERIOR
GEOLOGICAL SURVEY

STATE OF KANSAS

LAKE SCOTT NE QUADRANGLE
KANSAS
7.5 MINUTE SERIES (TOPOGRAPHIC)
NE 1/4 SANDON 15' QUADRANGLE

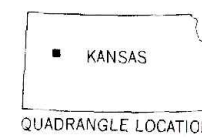


Maped, edited, and published by the Geological Survey
in cooperation with State of Kansas agencies
Control by USGS and NOS/NOAA
Topography by photogrammetric methods from aerial
photographs taken 1974. Field checked 1976
Projection: Kansas coordinate system, south zone
(Lambert conformal conic)
10,000-foot grid ticks based on Kansas coordinate
system, south and north zones
1000-meter Universal Transverse Mercator grid, zone 14
1927 North American datum
Fine red dashed lines indicate selected fence and field lines where
generally visible on aerial photographs. This information is unchecked



SCALE 1:24 000
1 000 0 1000 2000 3000 4000 5000 6000 7000 FEET
1 0 1 2 3 4 5 6 7 8 9 10 KILOMETER
CONTOUR INTERVAL 10 FEET
DOTTED LINES REPRESENT 5-FOOT CONTOURS
NATIONAL GEODETIC VERTICAL DATUM OF 1929

THIS MAP COMPLIES WITH NATIONAL MAP ACCURACY STANDARDS
FOR SALE BY U. S. GEOLOGICAL SURVEY, DENVER, COLORADO 80225, OR RESTON, VIRGINIA 22092
AND STATE GEOLOGICAL SURVEY, LAWRENCE, KANSAS 66044
A FOLDER DESCRIBING TOPOGRAPHIC MAPS AND SYMBOLS IS AVAILABLE ON REQUEST



ROAD CLASSIFICATION
Primary highway, hard surface
Secondary highway, hard surface
Unimproved road
Light-duty road, hard or improved surface
Interstate Route
U. S. Route
State Route

LAKE SCOTT NE, KANS.
NE 1/4 SANDON 15' QUADRANGLE
N3837.5 - W10045/7.5

1976

AMS 8861 III NE-SERIES V878