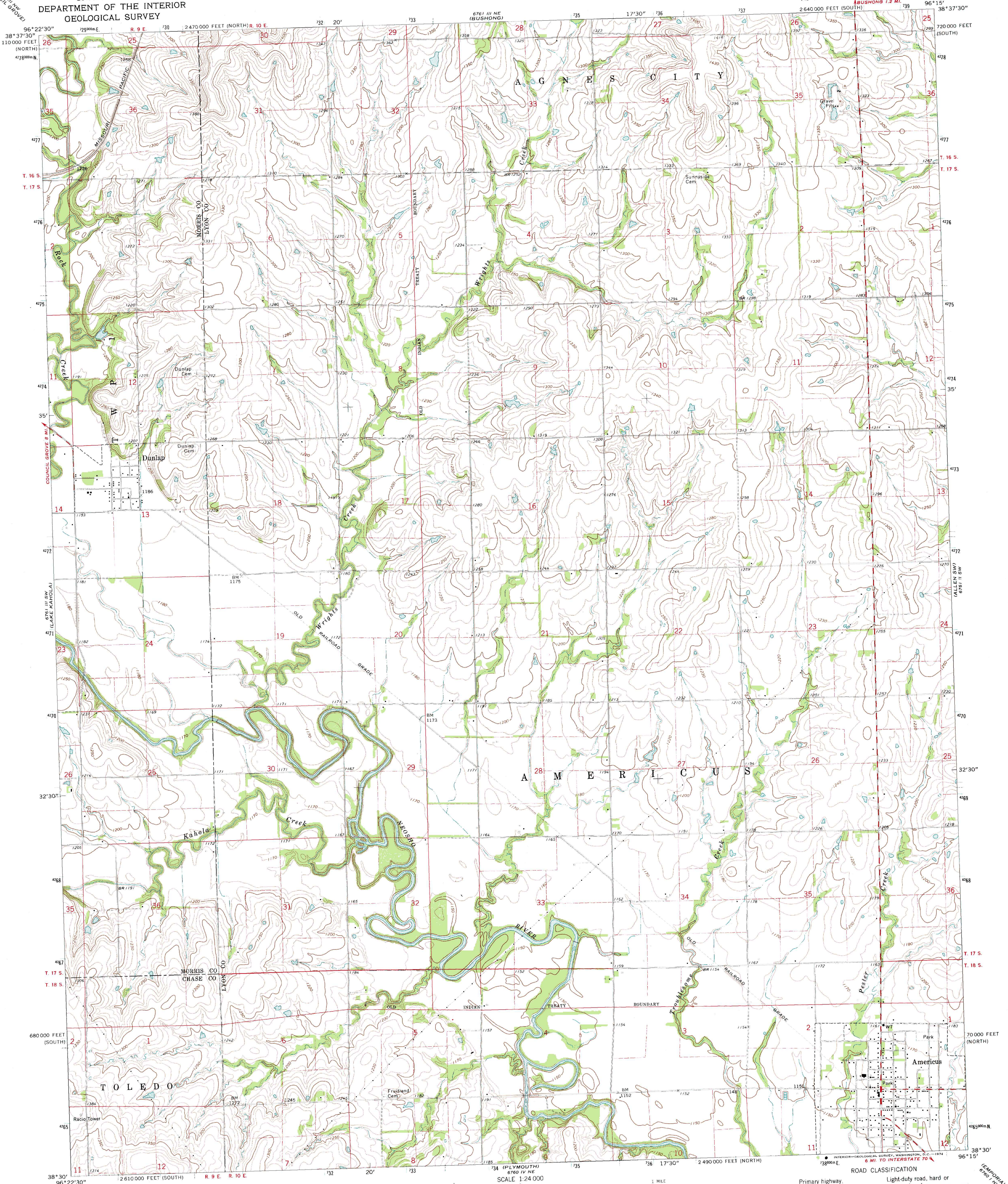


UNITED STATES
DEPARTMENT OF THE INTERIOR
GEOLOGICAL SURVEY

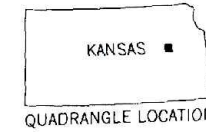
AMERICUS QUADRANGLE
KANSAS
7.5 MINUTE SERIES (TOPOGRAPHIC)



Mapped, edited, and published by the Geological Survey
Control by USGS and USC&GS
Topography by photogrammetric methods from aerial
photographs taken 1971. Field checked 1972
Projection: Kansas coordinate system, south zone
(Lambert conformal conic)
10,000-foot grid ticks based on Kansas coordinate
system, south and north zones
1000-meter Universal Transverse Mercator grid ticks,
zone 14, shown in blue. 1927 North American datum
Fine red dashed lines indicate selected fence and field lines where
generally visible on aerial photographs. This information is unchecked

SCALE 1:24 000
CONTOUR INTERVAL 10 FEET
DATUM IS MEAN SEA LEVEL
THIS MAP COMPLIES WITH NATIONAL MAP ACCURACY STANDARDS
FOR SALE BY U.S. GEOLOGICAL SURVEY, DENVER, COLORADO 80225, OR WASHINGTON, D.C. 20242
AND BY THE STATE GEOLOGICAL SURVEY, LAWRENCE, KANSAS 66044
A FOLDER DESCRIBING TOPOGRAPHIC MAPS AND SYMBOLS IS AVAILABLE ON REQUEST

ROAD CLASSIFICATION
Primary highway, hard surface
Secondary highway, hard surface
Interstate Route
Light-duty road, hard or improved surface
Unimproved road
U.S. Route
State Route



AMERICUS, KANS.
N3830-W9615/7.5
1972
AMS 6761 III SE-SERIES V878