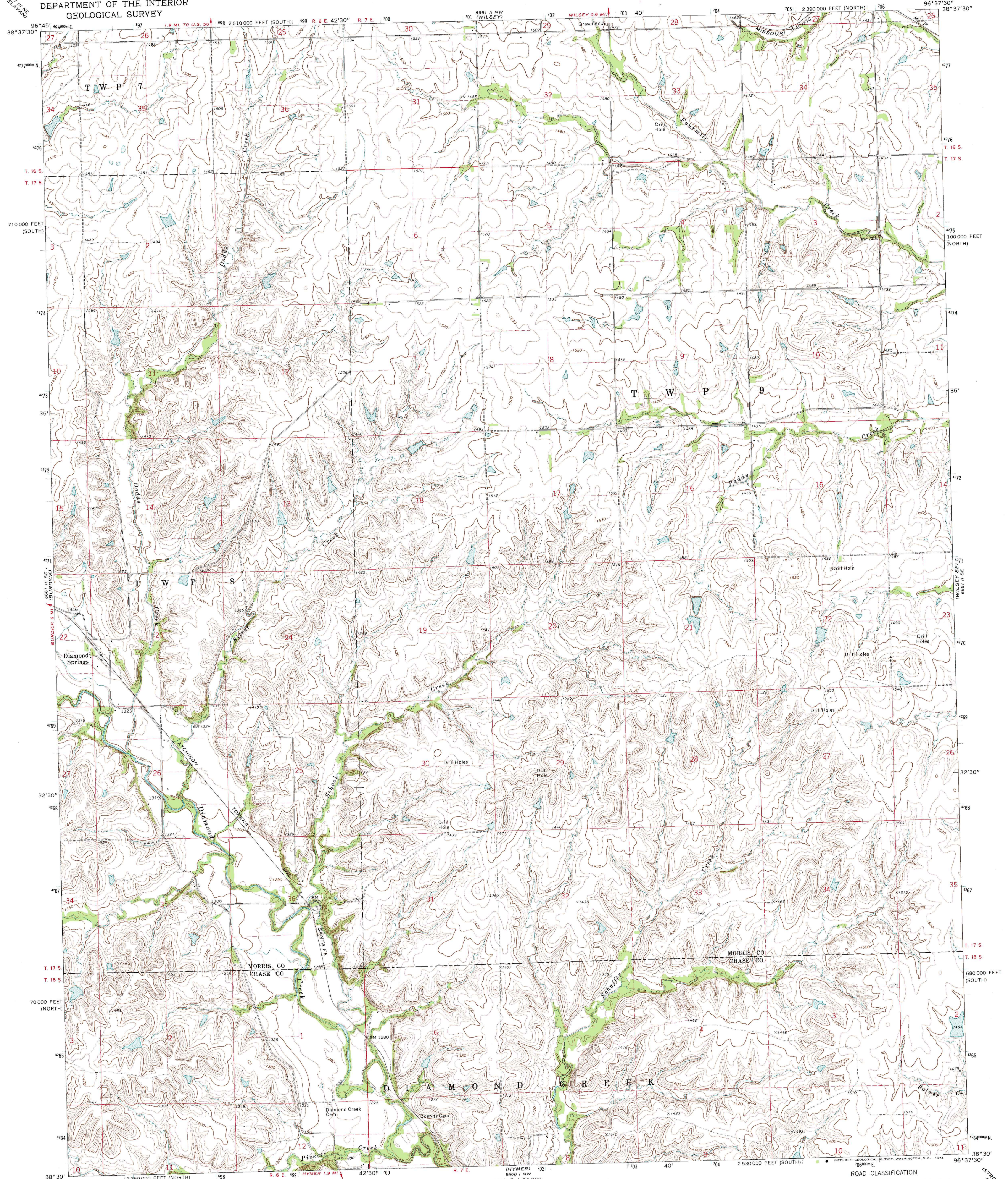


See LINE
DELAWARE

UNITED STATES
DEPARTMENT OF THE INTERIOR
GEOLOGICAL SURVEY

DIAMOND SPRINGS QUADRANGLE
KANSAS
7.5 MINUTE SERIES (TOPOGRAPHIC)

See LINE
COUNCIL GROVE LAKE



LINCOLNVILLE NE
6660 11 SE

Mapped, edited, and published by the Geological Survey
Control by USGS and USC&GS
Topography by photogrammetric methods from aerial
photographs taken 1971. Field checked 1972
Projection: Kansas coordinate system, north zone
(Lambert conformal conic)
10,000-foot grid ticks based on Kansas coordinate
system, north and south zones
1000-meter Universal Transverse Mercator grid ticks,
zone 14, shown in blue. 1927 North American datum
Fine red dashed lines indicate selected fence and field lines where
generally visible on aerial photographs. This information is unchecked

UTM GRID AND 1972 MAGNETIC NORTH
DECLINATION AT CENTER OF SHEET

SCALE 1:24 000
CONTOUR INTERVAL 10 FEET
DATUM IS MEAN SEA LEVEL

KANSAS
QUADRANGLE LOCATION

ROAD CLASSIFICATION
Primary highway, hard surface
Secondary highway, hard surface
Light-duty road, hard or improved surface
Unimproved road
Interstate Route
U. S. Route
State Route

DIAMOND SPRINGS, KANS.
N3830-W9637.5/7.5

1972

AMS 6661 11 SW-SERIES V878

THIS MAP COMPLIES WITH NATIONAL MAP ACCURACY STANDARDS
FOR SALE BY U. S. GEOLOGICAL SURVEY, DENVER, COLORADO 80225, OR WASHINGTON, D. C. 20242
AND BY THE STATE GEOLOGICAL SURVEY, LAWRENCE, KANSAS 66044
A FOLDER DESCRIBING TOPOGRAPHIC MAPS AND SYMBOLS IS AVAILABLE ON REQUEST

See LINE
STRONG CITY