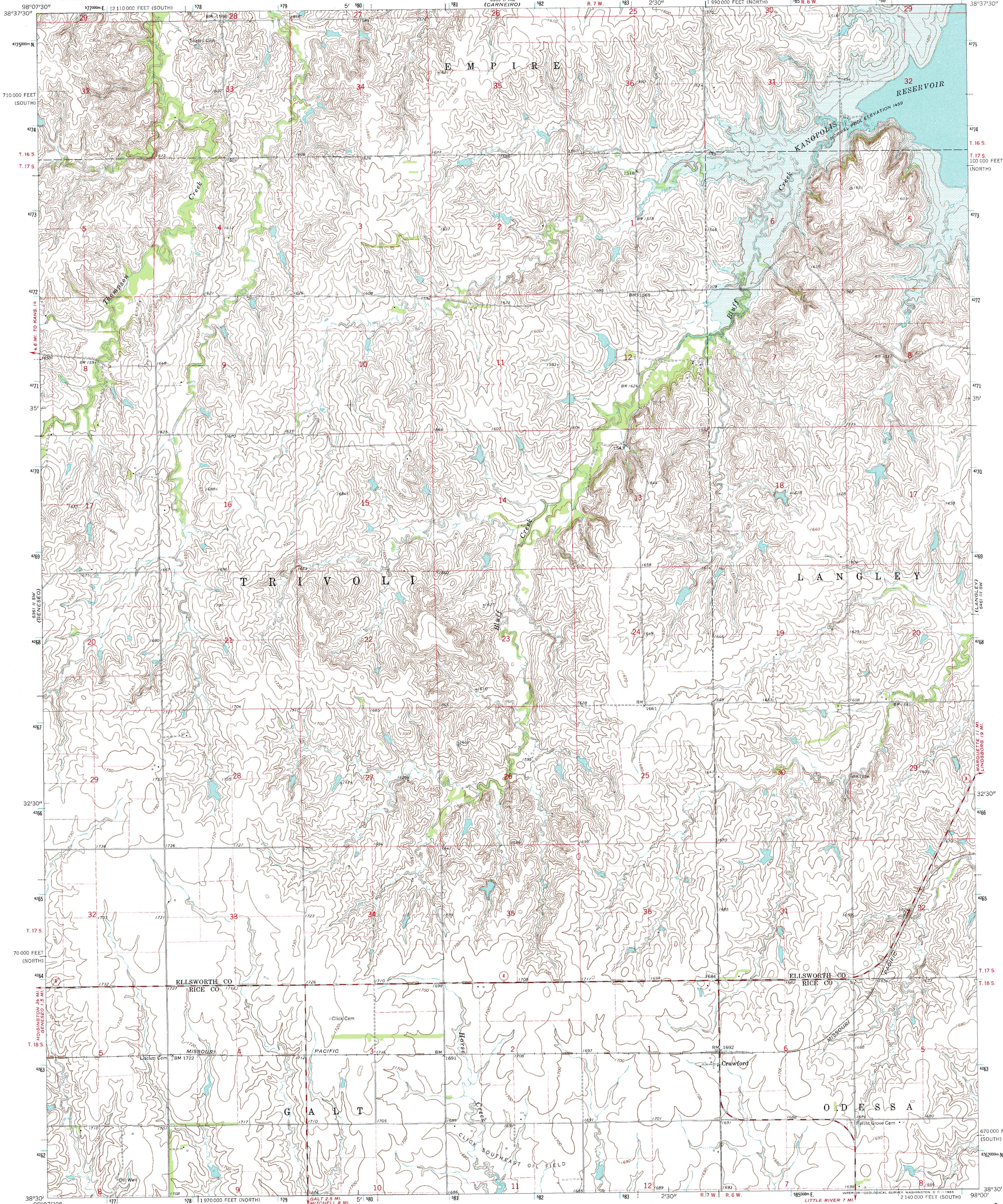


6361 II SE
(ELSWORTH)

UNITED STATES
DEPARTMENT OF THE INTERIOR
GEOLOGICAL SURVEY

CRAWFORD QUADRANGLE
KANSAS
7.5 MINUTE SERIES (TOPOGRAPHIC)

6361 III NW
(VENANGO)



Mapped, edited, and published by the Geological Survey

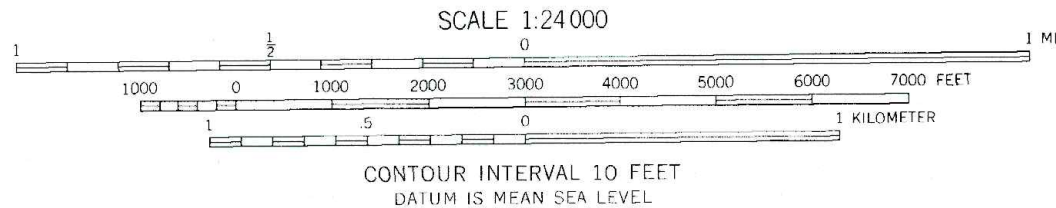
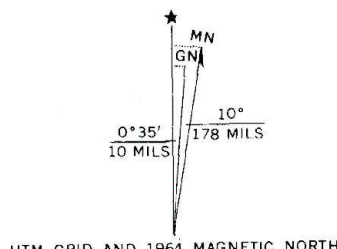
Control by USGS and USC&GS

Topography by photogrammetric methods from aerial photographs taken 1959. Field checked 1964

Polyconic projection. 1927 North American datum
10,000-foot grids based on Kansas coordinate system, north and south zones
1000-meter Universal Transverse Mercator grid ticks, zone 14, shown in blue

Area covered by dashed light-blue pattern is subject to controlled inundation

Fine red dashed lines indicate selected fence and field lines where generally visible on aerial photographs. This information is unchecked



THIS MAP COMPLIES WITH NATIONAL MAP ACCURACY STANDARDS
FOR SALE BY U. S. GEOLOGICAL SURVEY, DENVER, COLORADO 80225 OR WASHINGTON, D. C. 20242
AND BY THE STATE GEOLOGICAL SURVEY, LAWRENCE, KANSAS
A FOLDER DESCRIBING TOPOGRAPHIC MAPS AND SYMBOLS IS AVAILABLE ON REQUEST

CRAWFORD, KANS.
N3830-W9800/7.5

1964

AMS 6361 II SE-SERIES V878

