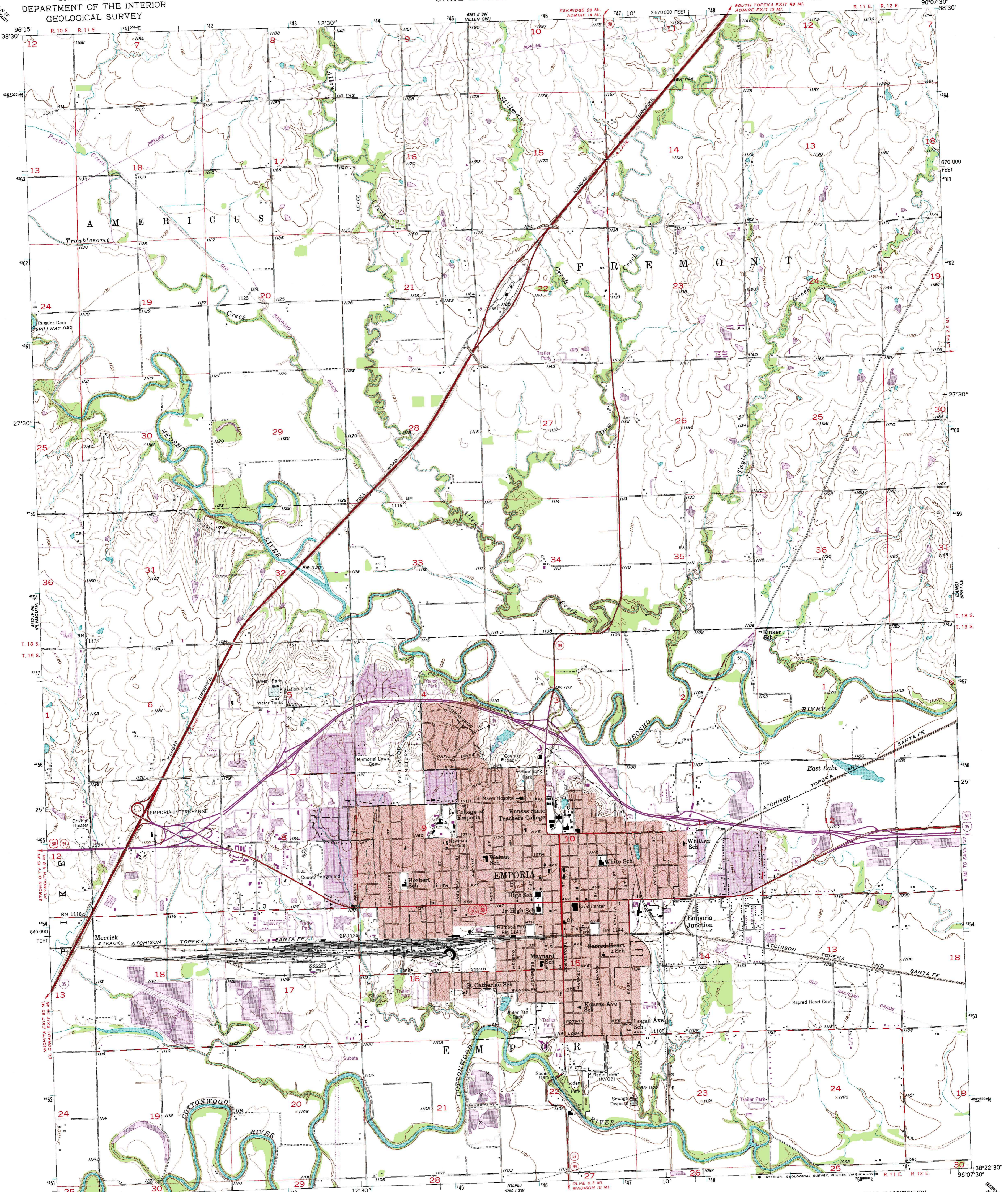


UNITED STATES
DEPARTMENT OF THE INTERIOR
GEOLOGICAL SURVEY

STATE OF KANSAS

EMPORIA QUADRANGLE
KANSAS—LYON CO.
7.5 MINUTE SERIES (TOPOGRAPHIC)

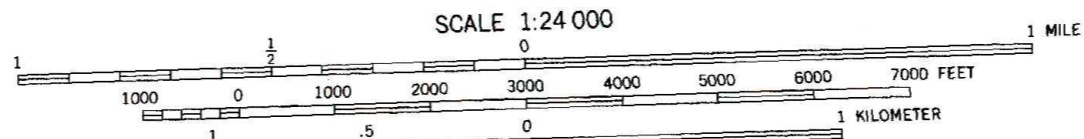


Mapped, edited, and published by the Geological Survey
in cooperation with State of Kansas agencies
Control by USGS and USC&GS

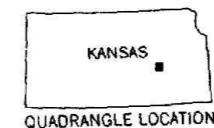
Topography from aerial photographs by Kersh plotter
Aerial photographs taken 1956. Field check 1957
Polyconic projection. 1927 North American datum
10,000-foot grid based on Kansas coordinate system, south zone
1000-meter Universal Transverse Mercator grid ticks,
zone 14, shown in blue

Red tint indicates areas in which only
landmark buildings are shown
Revisions shown in purple compiled in cooperation with
State of Kansas agencies from aerial photographs taken
1978. Map edited 1979. This information not field checked
Purple tint indicates extension of urban areas

UTM GRID AND 1979 MAGNETIC NORTH
DECLINATION AT CENTER OF SHEET
To place on the predicted North American Datum 1983,
move the projection lines 1 meter north and
24 meters east as shown by dashed corner ticks



CONTOUR INTERVAL 10 FEET
NATIONAL GEODETIC VERTICAL DATUM OF 1929



ROAD CLASSIFICATION
Heavy-duty ——— Light-duty ———
Medium-duty ——— Unimproved dirt ———
U.S. Route ——— State Route ———
Interstate Route ———

EMPORIA, KANS.
38096-D2-TF-024

1957
PHOTO-REVISSED 1979
DMA 6760 1 NW—SERIES V878

THIS MAP COMPLIES WITH NATIONAL MAP ACCURACY STANDARDS
FOR SALE BY U. S. GEOLOGICAL SURVEY, DENVER, COLORADO 80225, OR RESTON, VIRGINIA 22092
AND STATE GEOLOGICAL SURVEY, LAWRENCE, KANSAS 66044
A FOLDER DESCRIBING TOPOGRAPHIC MAPS AND SYMBOLS IS AVAILABLE ON REQUEST