

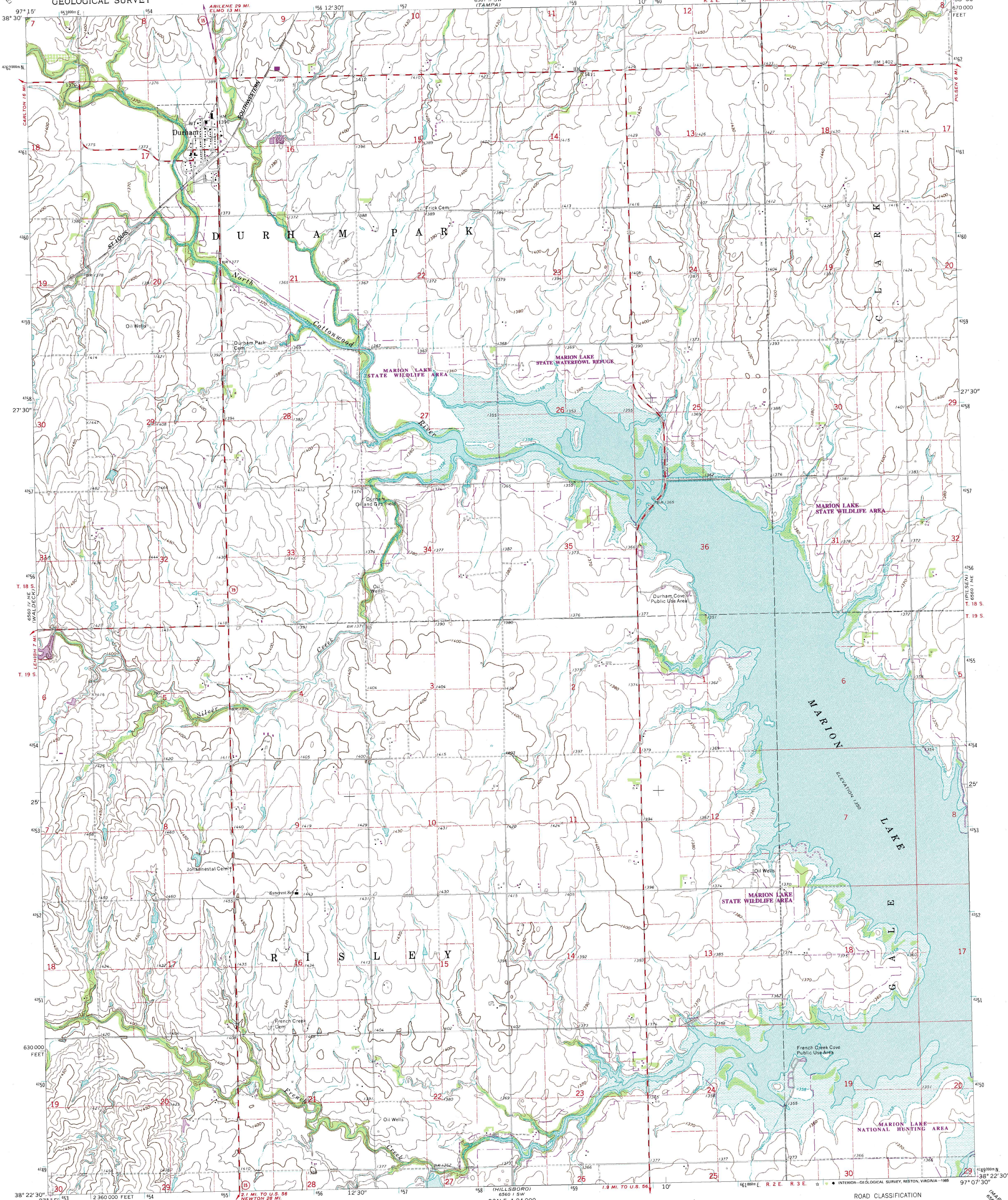
6560 11 SE
(679000 S)

UNITED STATES
DEPARTMENT OF THE INTERIOR
GEOLOGICAL SURVEY

STATE OF KANSAS

DURHAM QUADRANGLE
KANSAS—MARION CO.
7.5 MINUTE SERIES (TOPOGRAPHIC)

6560 11 SE
(679000 S)



Mapped, edited, and published by the Geological Survey
in cooperation with State of Kansas agencies
Control by USGS and USC&GS
Topography by photogrammetric methods from aerial
photographs taken 1969. Field checked 1971
Polyconic projection. 1927 North American datum
10,000-foot grid based on Kansas coordinate system, south zone
1000-meter Universal Transverse Mercator grid ticks,
zone 14, shown in blue
To place on the predicted North American Datum 1983,
move the projection lines 1 meter north and
27 meters east as shown by dashed corner ticks
Areas covered by dashed light-blue pattern
are subject to controlled inundation
There may be private inholdings within the boundaries
of the National or State reservations shown on this map

UTM GRID AND 1985 MAGNETIC NORTH
DECLINATION AT CENTER OF SHEET

SCALE 1:24 000
CONTOUR INTERVAL 10 FEET
NATIONAL GEODETIC VERTICAL DATUM OF 1929

THIS MAP COMPLIES WITH NATIONAL MAP ACCURACY STANDARDS
FOR SALE BY U.S. GEOLOGICAL SURVEY, DENVER, COLORADO 80225, OR RESTON, VIRGINIA 22092
AND KANSAS GEOLOGICAL SURVEY, LAWRENCE, KANSAS 66044
A FOLDER DESCRIBING TOPOGRAPHIC MAPS AND SYMBOLS IS AVAILABLE ON REQUEST

Revisions shown in purple and woodland compiled from
aerial photographs taken 1981 and other sources. This
information not field checked. Map edited 1985

ROAD CLASSIFICATION
Primary highway, hard surface
Secondary highway, hard surface
Unimproved road
Light-duty road, hard or improved surface
Unimproved road
Interstate Route
U. S. Route
State Route

KANSAS
QUADRANGLE LOCATION

DURHAM, KANSAS.
38097-D2-TF-024

1971
PHOTOREVISED 1985
DMA 6560 1 NW-SERIES V878