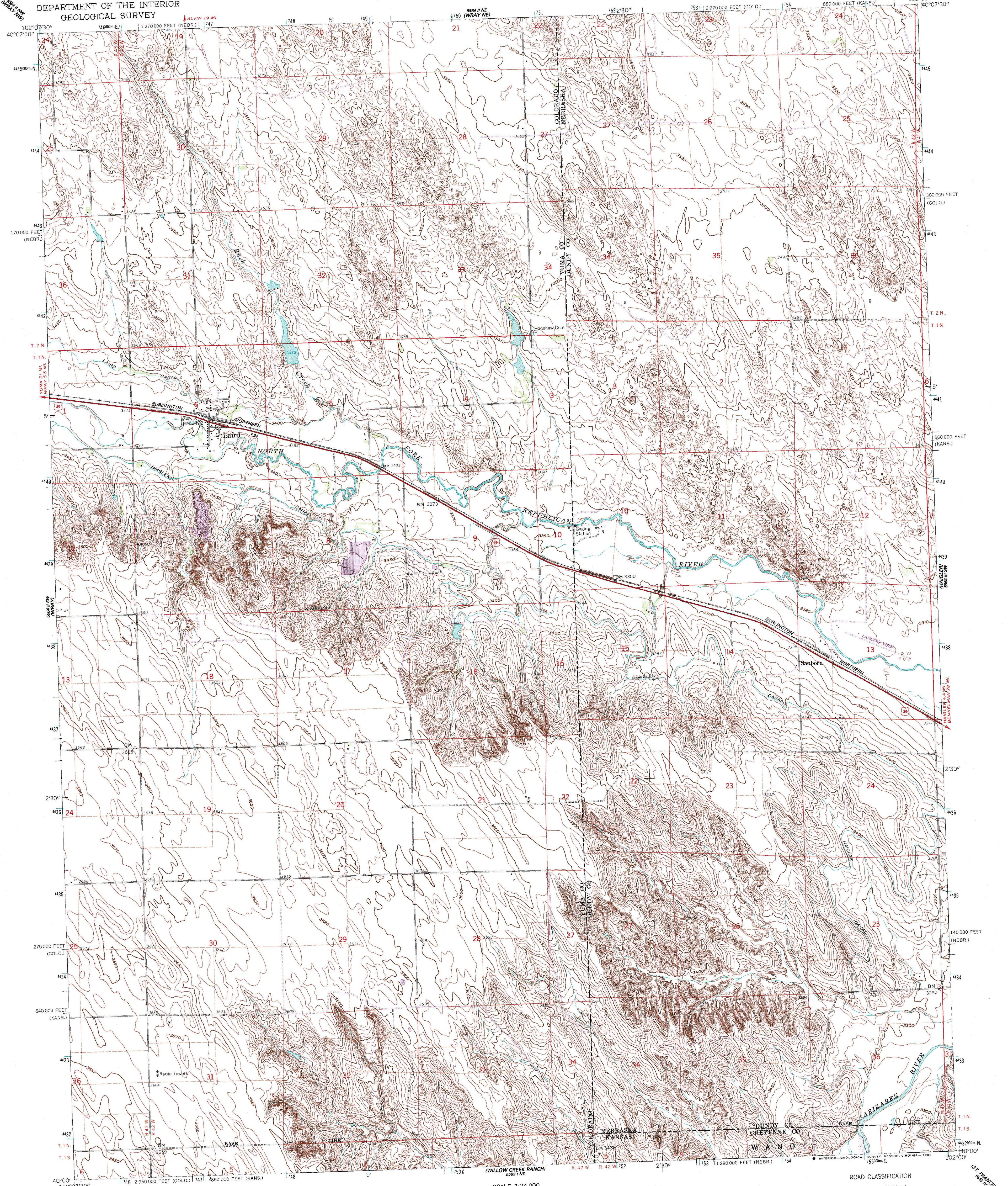


UNITED STATES
DEPARTMENT OF THE INTERIOR
GEOLOGICAL SURVEY

LAIRD QUADRANGLE
COLORADO-NEBRASKA-KANSAS
7.5 MINUTE SERIES (TOPOGRAPHIC)



Mapped, edited, and published by the Geological Survey as part of the Department of the Interior program for the development of the Missouri River Basin.

Control by USGS and NOS/NOAA.

Topography by photogrammetric methods from aerial photographs taken 1959-60. Field checked 1961.

Polyconic projection. 1927 North American Datum.

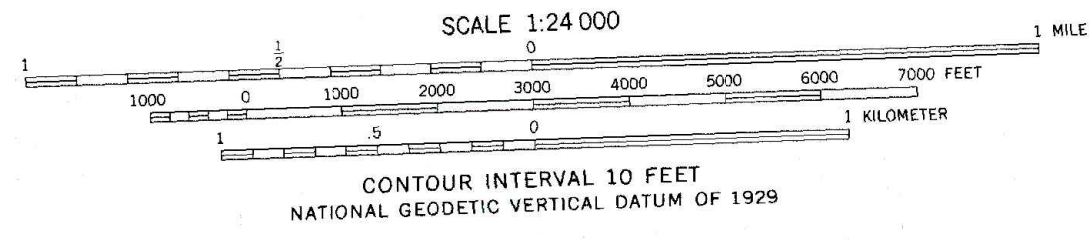
10,000-foot grids based on Colorado coordinate system, north zone, Nebraska coordinate system, south zone, and Kansas coordinate system, north zone.

1000-meter Universal Transverse Mercator grid ticks, zone 13, shown in blue.

Fine red dashed lines indicate selected fence and field lines where generally visible on aerial photographs. This information is unchecked.

UTM GRID AND 1984 MAGNETIC NORTH DECLINATION AT CENTER OF SHEET

Revisions shown in purple compiled from aerial photographs taken 1980 and other source data. This information not field checked. Map edited 1984.



THIS MAP COMPLIES WITH NATIONAL MAP ACCURACY STANDARDS FOR SALE BY U. S. GEOLOGICAL SURVEY, DENVER, COLORADO 80225 OR RESTON, VIRGINIA 22092 AND KANSAS GEOLOGICAL SURVEY, LAWRENCE, KANSAS 66044. A FOLDER DESCRIBING TOPOGRAPHIC MAPS AND SYMBOLS IS AVAILABLE ON REQUEST.

ROAD CLASSIFICATION

Heavy-duty ——— Light-duty ———

Unimproved dirt ———

U. S. Route ———

LAIRD, COLO.-NEBR.-KANS.

40102-A1-TF-024

1961

PHOTOREVISED 1984

DMA 5564 II SE-SERIES V877