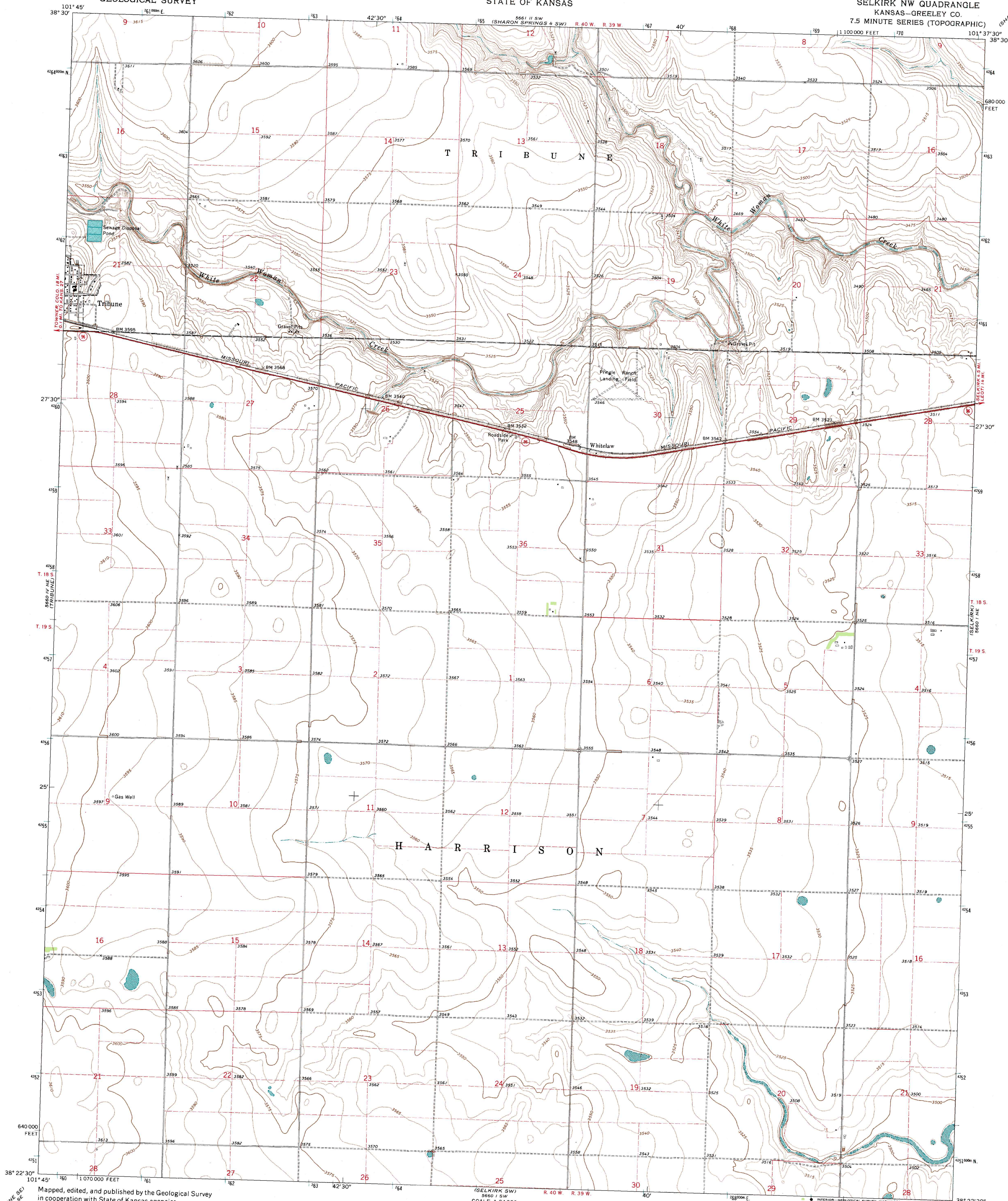


UNITED STATES  
DEPARTMENT OF THE INTERIOR  
GEOLOGICAL SURVEY

STATE OF KANSAS

SELKIRK NW QUADRANGLE  
KANSAS—GREELEY CO.  
7.5 MINUTE SERIES (TOPOGRAPHIC)



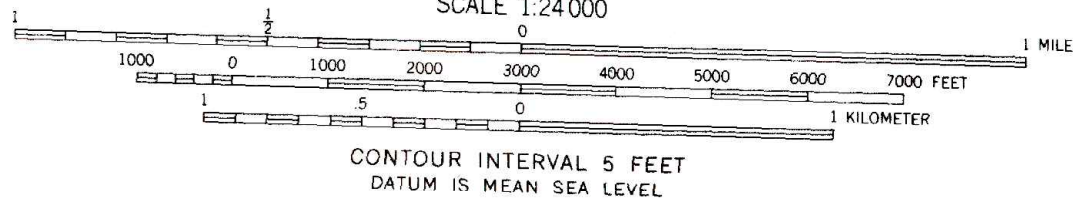
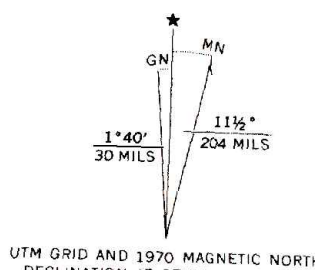
Mapped, edited, and published by the Geological Survey  
in cooperation with State of Kansas agencies

Control by USGS and USC&GS

Topography by photogrammetric methods from aerial  
photographs taken 1968. Field checked 1970

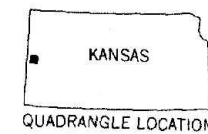
Polyconic projection. 1927 North American datum  
10,000-foot grid based on Kansas coordinate system, south zone  
1000-meter Universal Transverse Mercator grid ticks,  
zone 14, shown in blue

Fine red dashed lines indicate selected fence and field lines where  
generally visible on aerial photographs. This information is unchecked



THIS MAP COMPLIES WITH NATIONAL MAP ACCURACY STANDARDS  
FOR SALE BY U. S. GEOLOGICAL SURVEY, DENVER, COLORADO 80225, OR WASHINGTON, D. C. 20242  
AND BY THE STATE GEOLOGICAL SURVEY, LAWRENCE, KANSAS 66044  
A FOLDER DESCRIBING TOPOGRAPHIC MAPS AND SYMBOLS IS AVAILABLE ON REQUEST

ROAD CLASSIFICATION  
Primary highway, all weather, Light-duty road, all weather,  
hard surface improved surface  
Unimproved road, fair or dry  
weather  
State Route



SELKIRK NW, KANS.  
N3822.5-W10137.5/7.5

1970

AMS 5660 I NW—SERIES V878