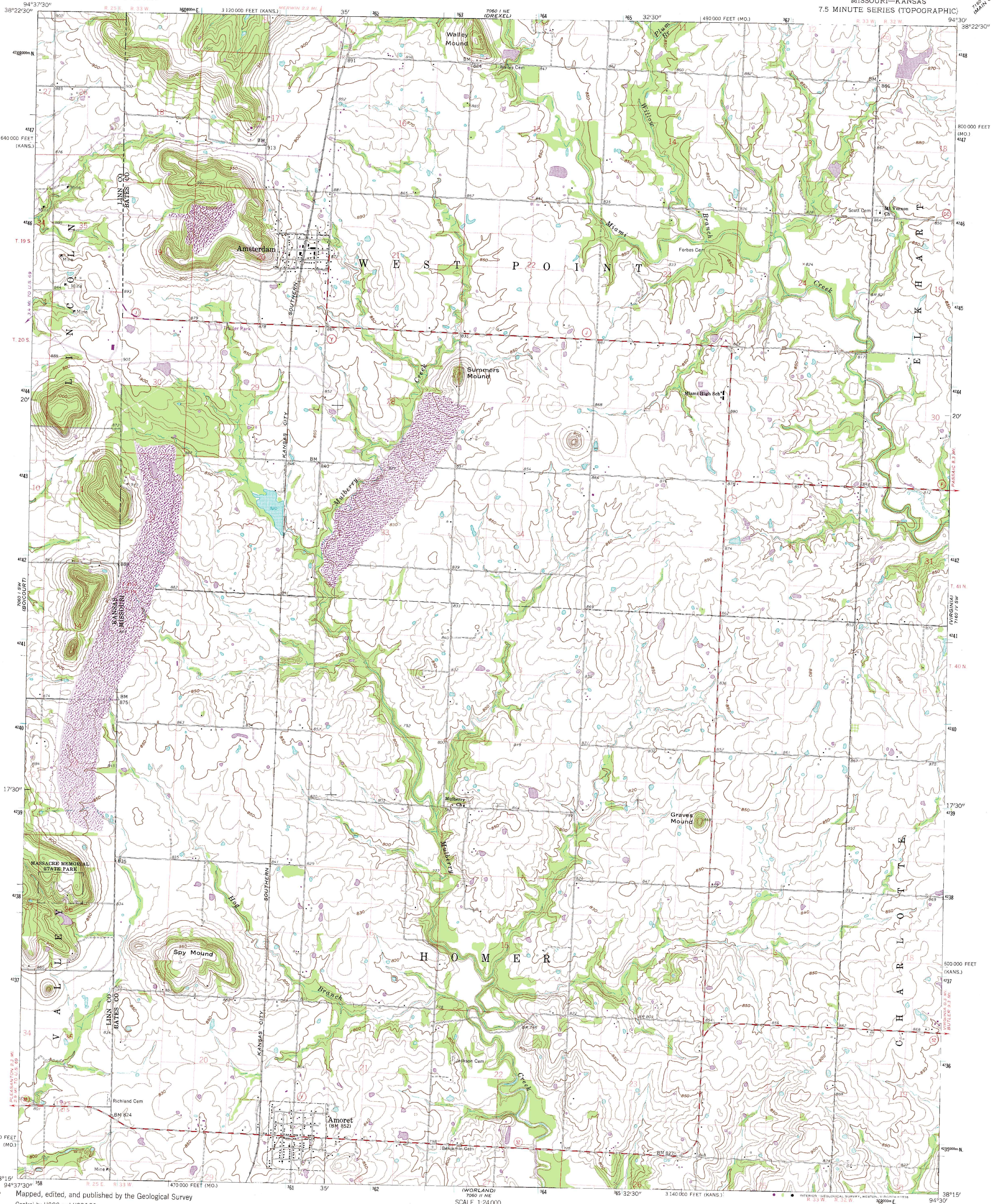


(NEW LANCASTER)
760 1 NW
760 1 NE

UNITED STATES
DEPARTMENT OF THE INTERIOR
GEOLOGICAL SURVEY

AMORET QUADRANGLE
MISSOURI-KANSAS
7.5 MINUTE SERIES (TOPOGRAPHIC)

760 1 NW
760 1 NE
MAIN CITY



Mapped, edited, and published by the Geological Survey
Control by USGS and USC&GS

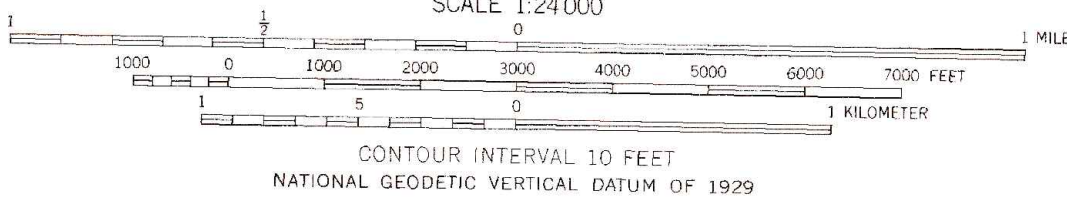
Topography by photogrammetric methods from aerial
photographs taken 1958. Field checked 1961

Polyconic projection. 1927 North American datum
10,000-foot grid based on Missouri coordinate system, west zone
and Kansas coordinate system, south zone
1000-meter Universal Transverse Mercator grid ticks,
zone 15, shown in blue

Fine red dashed lines indicate selected fence and field lines where
generally visible on aerial photographs. This information is unchecked

Revisions shown in purple compiled from aerial photographs
taken 1973. This information not field checked

UTM GRID AND 1973 MAGNETIC NORTH
DECLINATION AT CENTER OF SHEET



THIS MAP COMPLIES WITH NATIONAL MAP ACCURACY STANDARDS
FOR SALE BY U.S. GEOLOGICAL SURVEY, DENVER, COLORADO 80225, OR RESTON, VIRGINIA 22092
MISSOURI GEOLOGICAL SURVEY, ROLLA, MISSOURI 65401.
AND STATE GEOLOGICAL SURVEY, LAWRENCE, KANSAS 66044
A FOLDER DESCRIBING TOPOGRAPHIC MAPS AND SYMBOLS IS AVAILABLE ON REQUEST

AMORET, MO.-KANS.
N3815-W9430/7.5

1961
PHOTOREVISED 1973
AMS 7060 1 SE-SERIES V879

(PLEASANTON)
760 1 NW
760 1 NE

(NEW HOME)
760 1 NW
760 1 NE