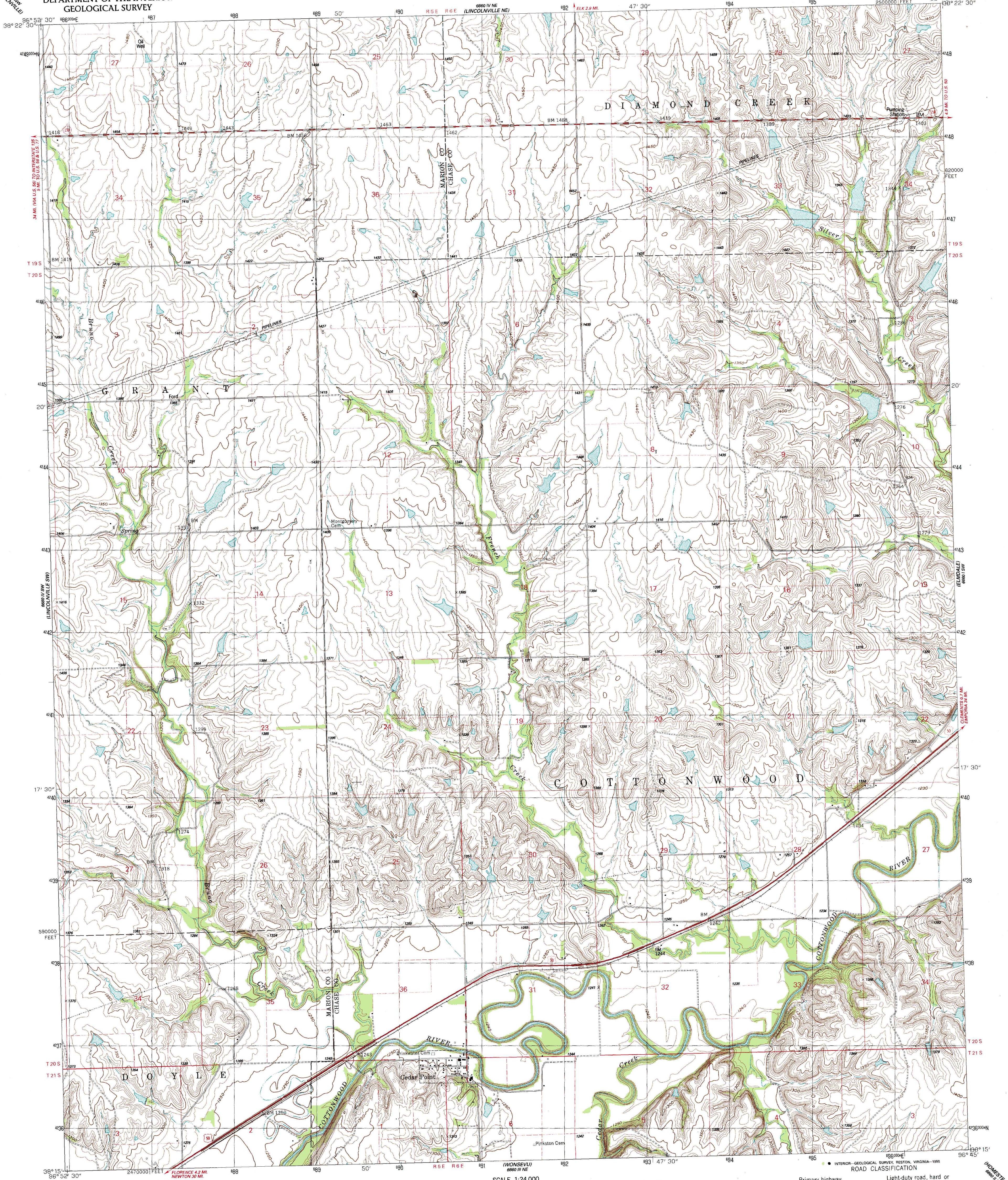


6880' 1/4 NW
(LINCOLNVILLE)

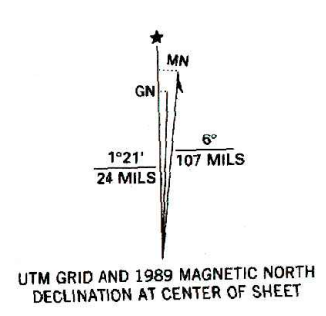
UNITED STATES
DEPARTMENT OF THE INTERIOR
GEOLOGICAL SURVEY

CEDAR POINT QUADRANGLE
KANSAS
7.5 MINUTE SERIES (TOPOGRAPHIC)

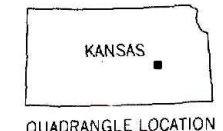
6880' 1/4 NW
(HOMESTEAD)



Produced by the United States Geological Survey
in cooperation with State of Kansas agencies
Control by USGS and NGS/NOAA
Topography by photogrammetric methods from aerial photographs
taken 1956. Field checked 1957. Revised from aerial photographs
taken 1986. Field checked 1989. Map edited 1989
Projection and 10,000-foot grid ticks: Kansas coordinate
system, south zone (Lambert conformal conic)
1000-meter Universal Transverse Mercator grid, zone 14
1927 North American Datum
To place on the predicted North American Datum 1983,
move the projection lines 1 meter north and
26 meters east as shown by dashed corner ticks
Fine red dashed lines indicate selected fence and field lines where
generally visible on aerial photographs. This information is unchecked



SCALE 1:24 000
CONTOUR INTERVAL 10 FEET
NATIONAL GEODETIC VERTICAL DATUM OF 1929



ROAD CLASSIFICATION
Primary highway, hard surface
Secondary highway, hard surface
Light-duty road, hard or improved surface
Unimproved road
Interstate Route
U. S. Route
State Route

THIS MAP COMPLIES WITH NATIONAL MAP ACCURACY STANDARDS
FOR SALE BY U. S. GEOLOGICAL SURVEY, DENVER, COLORADO 80228, OR RESTON, VIRGINIA 22092
AND KANSAS GEOLOGICAL SURVEY, LAWRENCE, KANSAS 66044
A FOLDER DESCRIBING TOPOGRAPHIC MAPS AND SYMBOLS IS AVAILABLE ON REQUEST

CEDAR POINT, KANS.

38096-C7-TF-024

1989

DMA 6660 IV SE - SERIES V878