

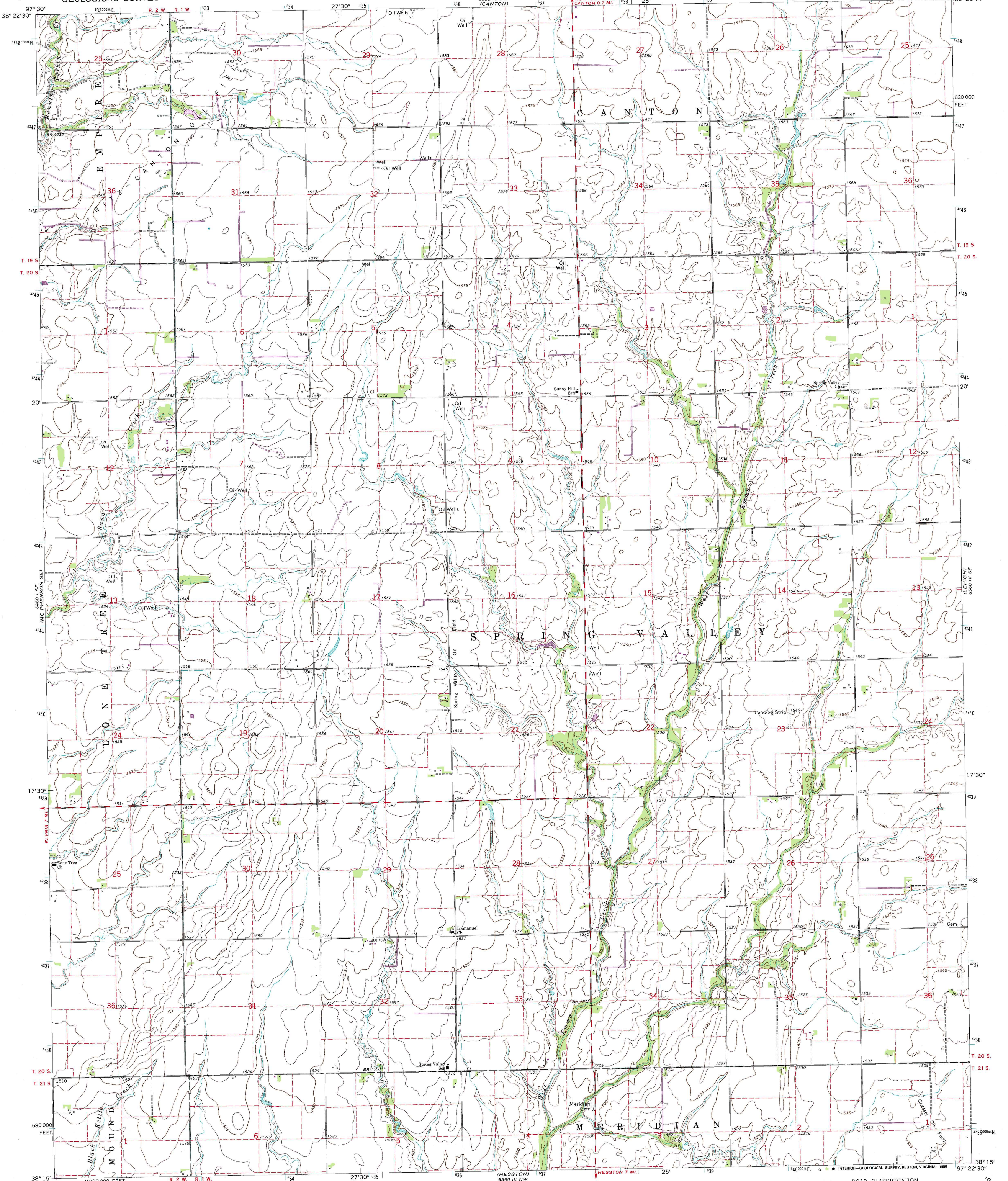
6560 IV SE
(GALVINS)

UNITED STATES
DEPARTMENT OF THE INTERIOR
GEOLOGICAL SURVEY

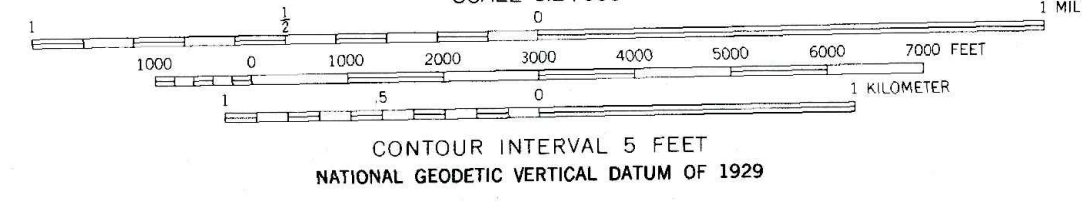
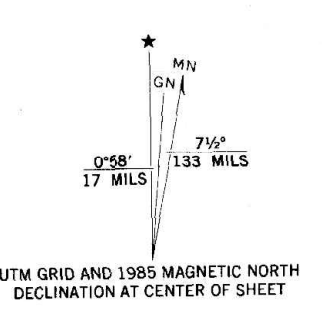
STATE OF KANSAS

CANTON SW QUADRANGLE
KANSAS—MC PHERSON CO.
7.5 MINUTE SERIES (TOPOGRAPHIC)

6560 IV SE
(WALDECK)



Mapped, edited, and published by the Geological Survey
in cooperation with State of Kansas agencies
Control by USGS and USC&GS
Topography by photogrammetric methods from aerial
photographs taken 1969. Field checked 1971.
Polyconic projection. 1927 North American datum
10,000-foot grid based on Kansas coordinate system, south zone
1000-meter Universal Transverse Mercator grid ticks,
zone 14, shown in blue
To place on the predicted North American Datum 1983,
move the projection lines 1 meter north and
27 meters east as shown by dashed corner ticks
Revisions shown in purple and woodland compiled from
aerial photographs taken 1981 and other sources. This
information not field checked. Map edited 1985



ROAD CLASSIFICATION

Primary highway, hard surface	Light-duty road, hard or improved surface
Secondary highway, hard surface	Unimproved road
Interstate Route	U.S. Route
	State Route

THIS MAP COMPLIES WITH NATIONAL MAP ACCURACY STANDARDS
FOR SALE BY U.S. GEOLOGICAL SURVEY, DENVER, COLORADO 80225, OR RESTON, VIRGINIA 22092
AND KANSAS GEOLOGICAL SURVEY, LAWRENCE, KANSAS 66044
A FOLDER DESCRIBING TOPOGRAPHIC MAPS AND SYMBOLS IS AVAILABLE ON REQUEST

CANTON SW, KANS.
38097-C4-TF-024
1971
PHOTOREVISED 1985
DMA 6560 IV SW-SERIES V878