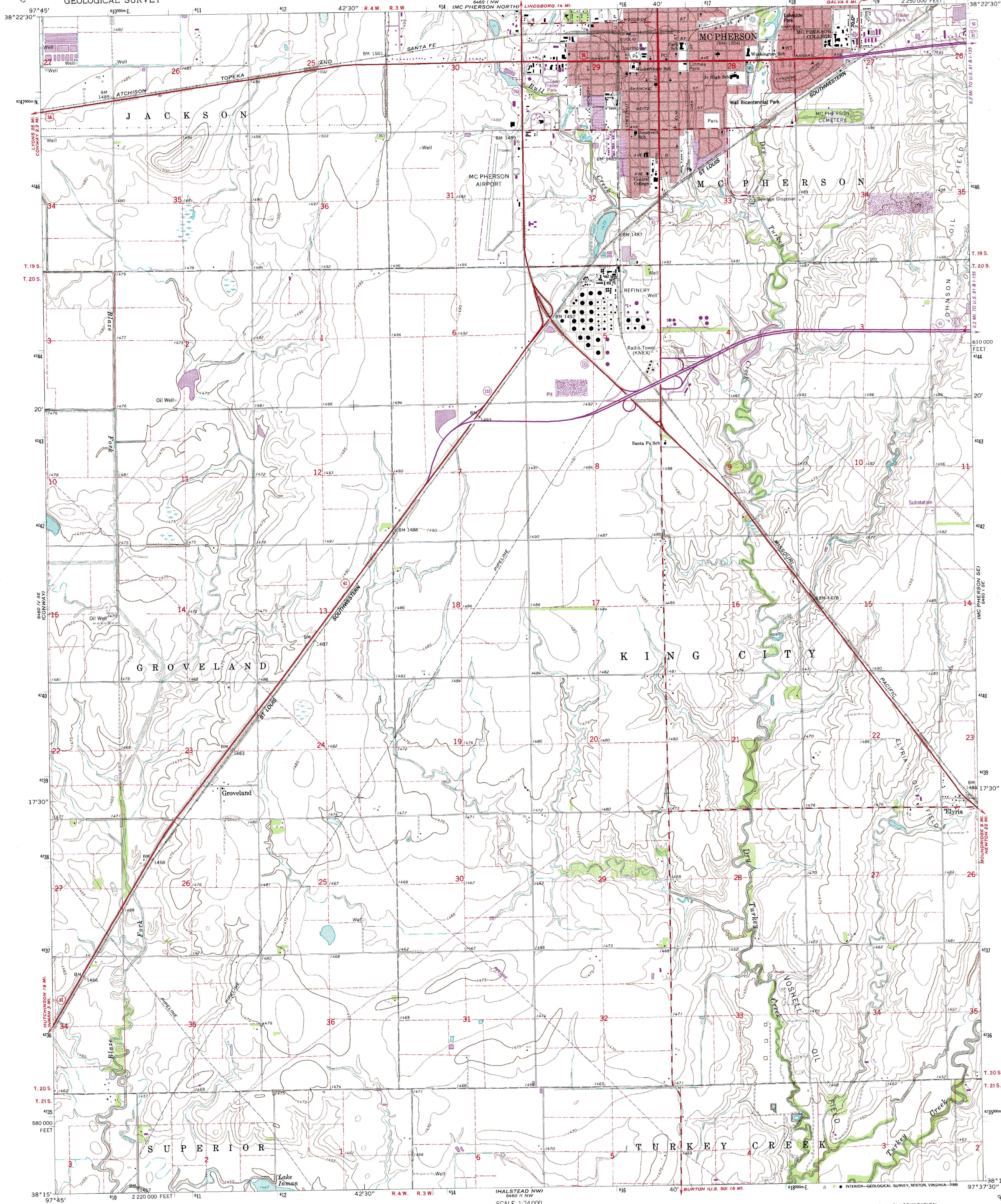


6460 I SW
(WINDOW NE)

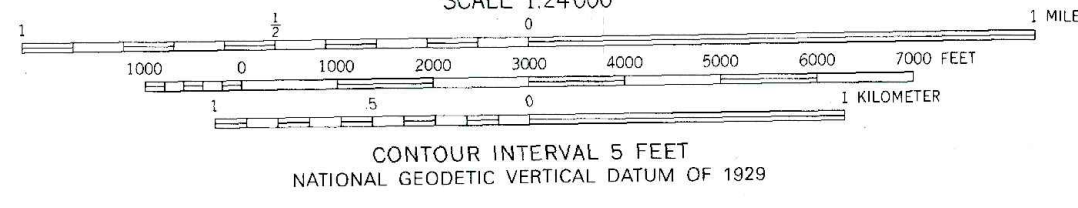
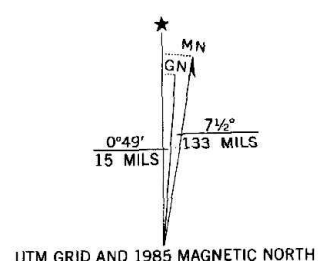
UNITED STATES
DEPARTMENT OF THE INTERIOR
GEOLOGICAL SURVEY

MC PHERSON SOUTH QUADRANGLE
KANSAS—MC PHERSON CO.
7.5 MINUTE SERIES (TOPOGRAPHIC)

6460 I NE
(GALL NW)



Mapped, edited, and published by the Geological Survey
Control by USGS and USC&GS
Topography by photogrammetric methods from aerial
photographs taken 1962. Field checked 1965
Polyconic projection. 1927 North American datum
10,000-foot grid based on Kansas coordinate system, south zone
1000-meter Universal Transverse Mercator grid ticks,
zone 14, shown in blue
To place on the predicted North American Datum 1983,
move the projection lines 1 meter north and
28 meters east as shown by dashed corner ticks
Red tint indicates areas in which only landmark buildings are shown



ROAD CLASSIFICATION

Heavy-duty	Light-duty
Medium-duty	Unimproved dirt
U.S. Route	State Route

MC PHERSON SOUTH, KANS.
38097-C6-TF-024
1965
PHOTOREVISED 1985
DMA 6460 I SW-SERIES V878