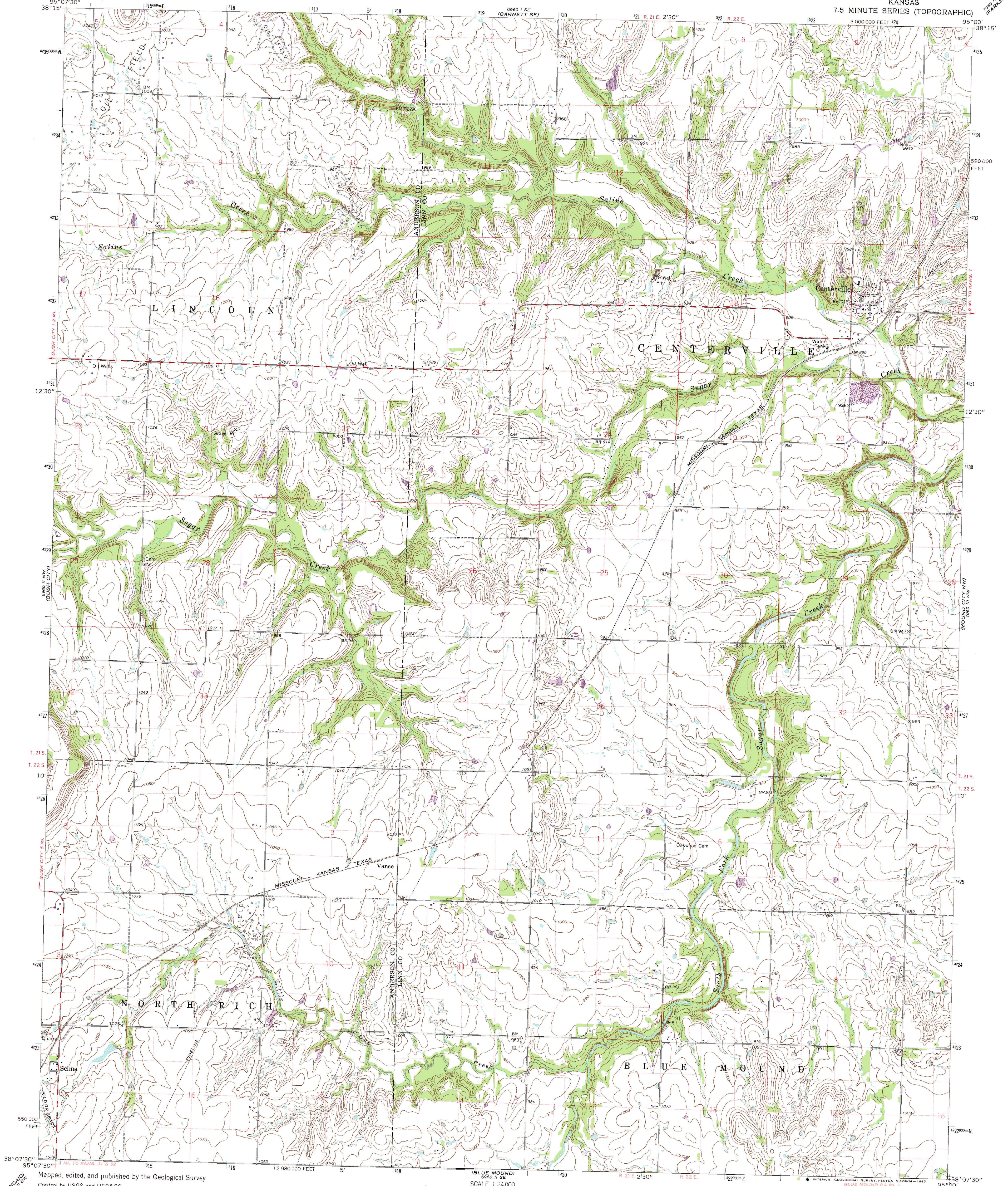
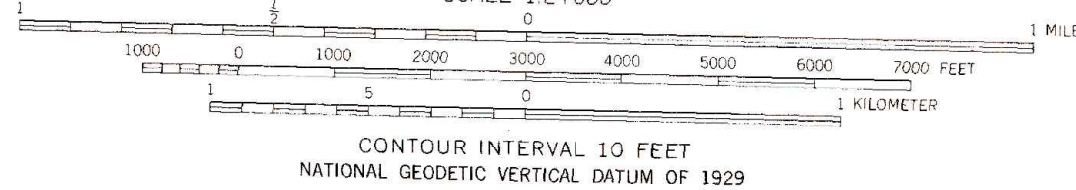
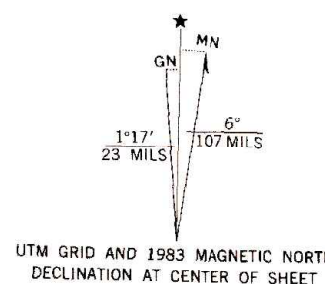


UNITED STATES
DEPARTMENT OF THE INTERIOR
GEOLOGICAL SURVEY

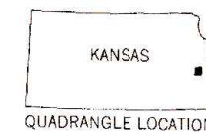
CENTERVILLE QUADRANGLE
KANSAS
7.5 MINUTE SERIES (TOPOGRAPHIC)



Maped, edited, and published by the Geological Survey
Control by USGS and USC&GS
Topography by photogrammetric methods from aerial
photographs taken 1964. Field checked 1966
Polyconic projection. 1927 North American datum
10,000-foot grid based on Kansas coordinate system, south zone
1000-meter Universal Transverse Mercator grid ticks,
zone 15, shown in blue
To place on the predicted North American Datum 1983,
move the projection lines 1 meter north and
21 meters east as shown by dashed corner ticks
Revisions shown in purple compiled from aerial photographs taken 1981 and
other sources. This information not field checked. Map edited 1983



THIS MAP COMPLIES WITH NATIONAL MAP ACCURACY STANDARDS
FOR SALE BY U. S. GEOLOGICAL SURVEY, DENVER, COLORADO 80225, OR RESTON, VIRGINIA 22092
AND KANSAS GEOLOGICAL SURVEY, LAWRENCE, KANSAS 63044
A FOLDER DESCRIBING TOPOGRAPHIC MAPS AND SYMBOLS IS AVAILABLE ON REQUEST



ROAD CLASSIFICATION
Medium-duty ——— Light-duty ———
Unimproved dirt ———

CENTERVILLE, KANS.
N3807.5—W9500/7.5

1966
PHOTOREVISED 1983
DMA 6960 II NE—SERIES 878