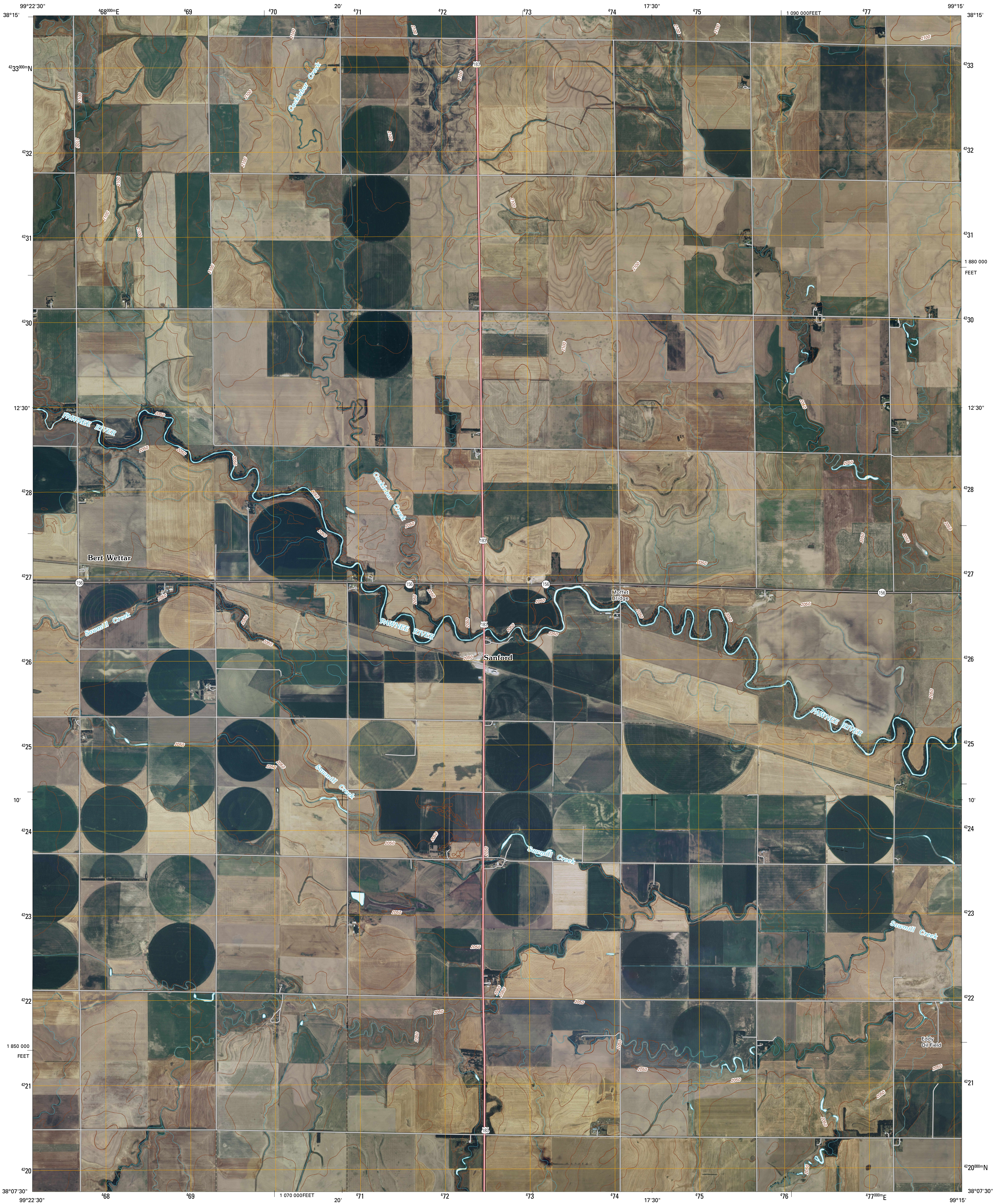




U.S. DEPARTMENT OF THE INTERIOR  
U. S. GEOLOGICAL SURVEY



SANFORD QUADRANGLE  
KANSAS  
7.5-MINUTE SERIES

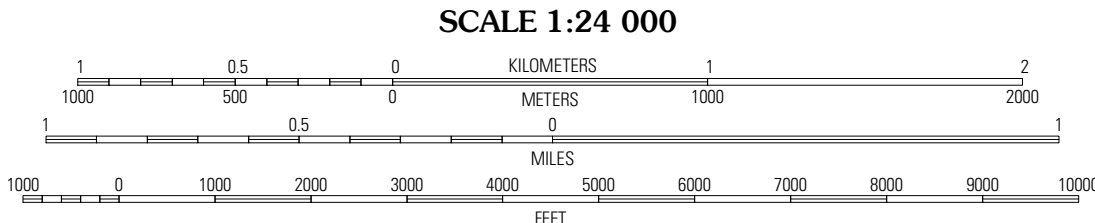


Produced by the United States Geological Survey  
North American Datum of 1983 (NAD83)  
World Geodetic System of 1984 (WGS84). Projection and  
1 000-meter grid: Universal Transverse Mercator, Zone 14S  
10 000-foot ticks: Kansas Coordinate System of 1983  
(south zone)

Imagery.....NAIP, July 2008  
Roads.....National Transportation Dataset, 2006  
Names.....CNIS, 2008  
Hydrography.....National Hydrography Dataset, 2008  
Contours.....National Elevation Dataset, 2006

UTM GRID AND 2009 MAGNETIC NORTH  
DECLINATION AT CENTER OF SHEET

U.S. National Grid
100,000-m Square ID
MH
Grid Zone Designation
14S



SCALE 1:24 000

CONTOUR INTERVAL 10 FEET

This map was produced to conform with version 0.5.10 of the  
draft USGS Standards for 7.5-Minute Quadrangle Maps.  
A metadata file associated with this product is also draft version 0.5.10



Rush Center SW	Rush Center SE	Ash Valley
Rozel	Sanford	Fort Larned
Rozel SW	Rozel SE	Garfield

ADJOINING 7.5' QUADRANGLES

ROAD CLASSIFICATION

Interstate Route  
US Route  
Ramp

State Route  
Local Road  
4WD

Interstate Route  
US Route  
State Route

SANFORD, KS  
2009