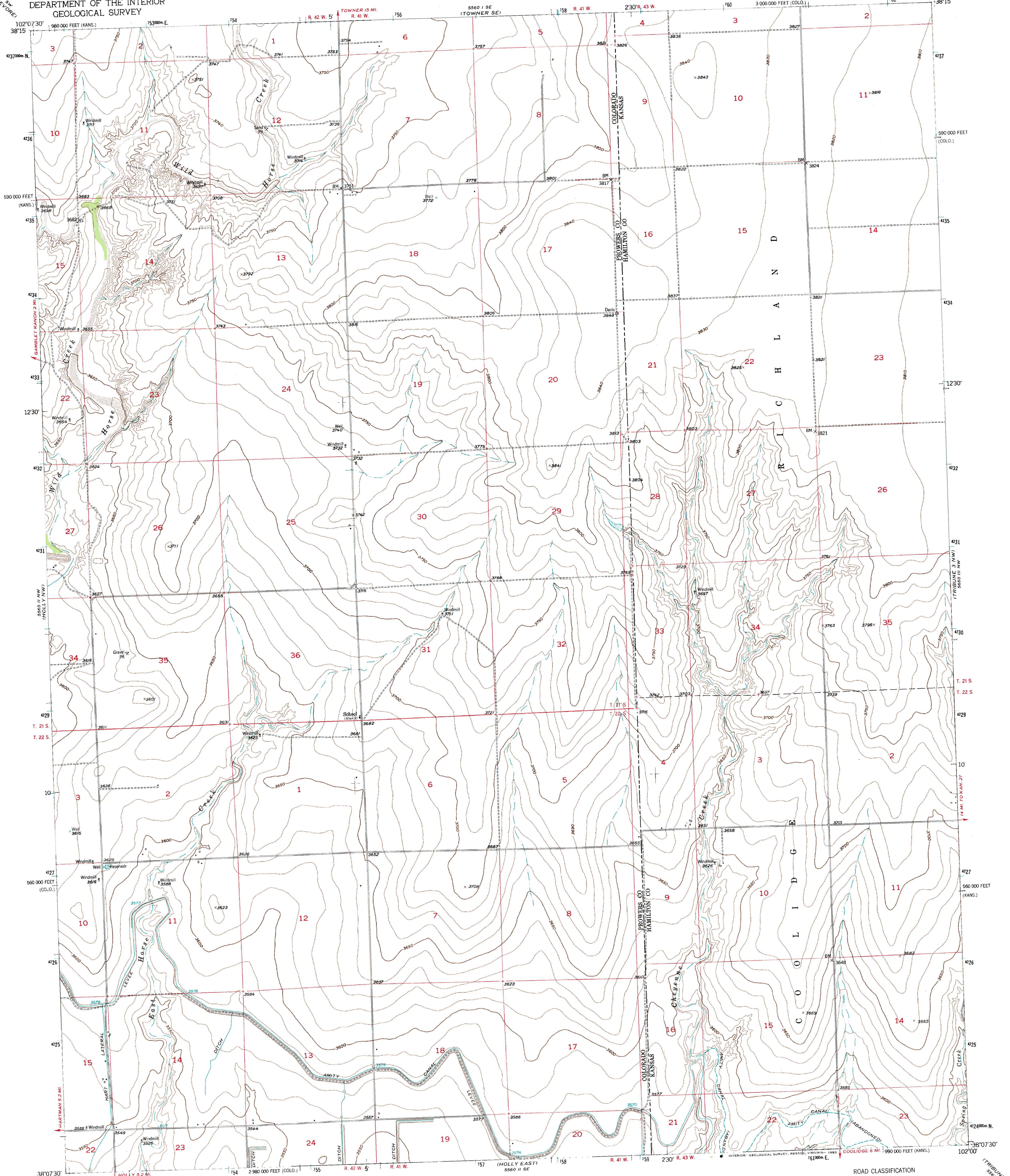
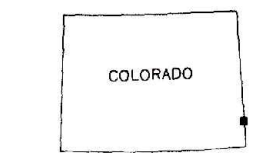
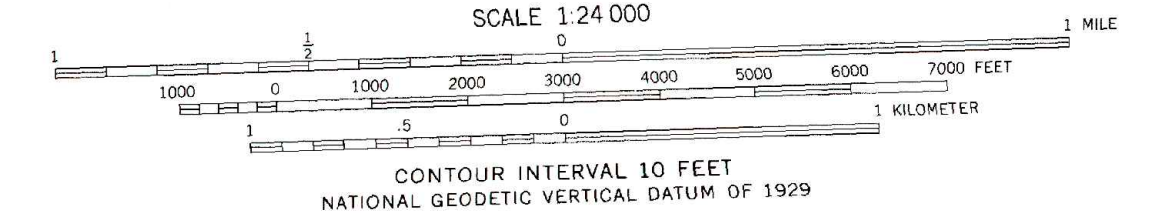
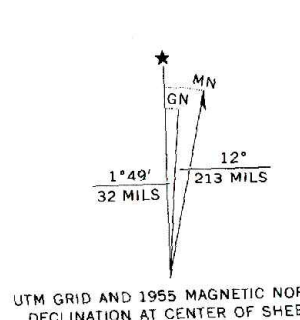


HOLLY NE QUADRANGLE
COLORADO-KANSAS
7.5 MINUTE SERIES (TOPOGRAPHIC)

UNITED STATES
DEPARTMENT OF THE INTERIOR
GEOLOGICAL SURVEY



Mapped, edited, and published by the Geological Survey
Control by USGS and USC&GS
Culture and drainage in part compiled from aerial photographs
taken 1947. Topography by planetable surveys 1955
Polyconic projection, 1927 North American Datum
10,000-foot grid based on Colorado coordinate system,
south zone and Kansas coordinate system, south zone
R. 41 W., R. 42 W., and R. 43 W. of the Sixth Principal
Meridian are duplicated in Colorado and Kansas
1000-meter Universal Transverse Mercator grid ticks,
zone 13, shown in blue
To place on the predicted North American Datum 1983
move the projection lines 2 meters north and
40 meters east as shown by dashed corner ticks



ROAD CLASSIFICATION			
Heavy-duty	Light-duty	Unimproved dirt	
Medium-duty			
U. S. Route	State Route		

HOLLY NE, COLO.-KAN.
N3807.5 - W10200/7.5

1955
PHOTOINSPECTED 1977
DMA 5560 II NE-SERIES V877

THIS MAP COMPLIES WITH NATIONAL MAP ACCURACY STANDARDS
FOR SALE BY U. S. GEOLOGICAL SURVEY, DENVER, COLORADO 80225 OR RESTON, VIRGINIA 22092
A FOLDER DESCRIBING TOPOGRAPHIC MAPS AND SYMBOLS IS AVAILABLE ON REQUEST