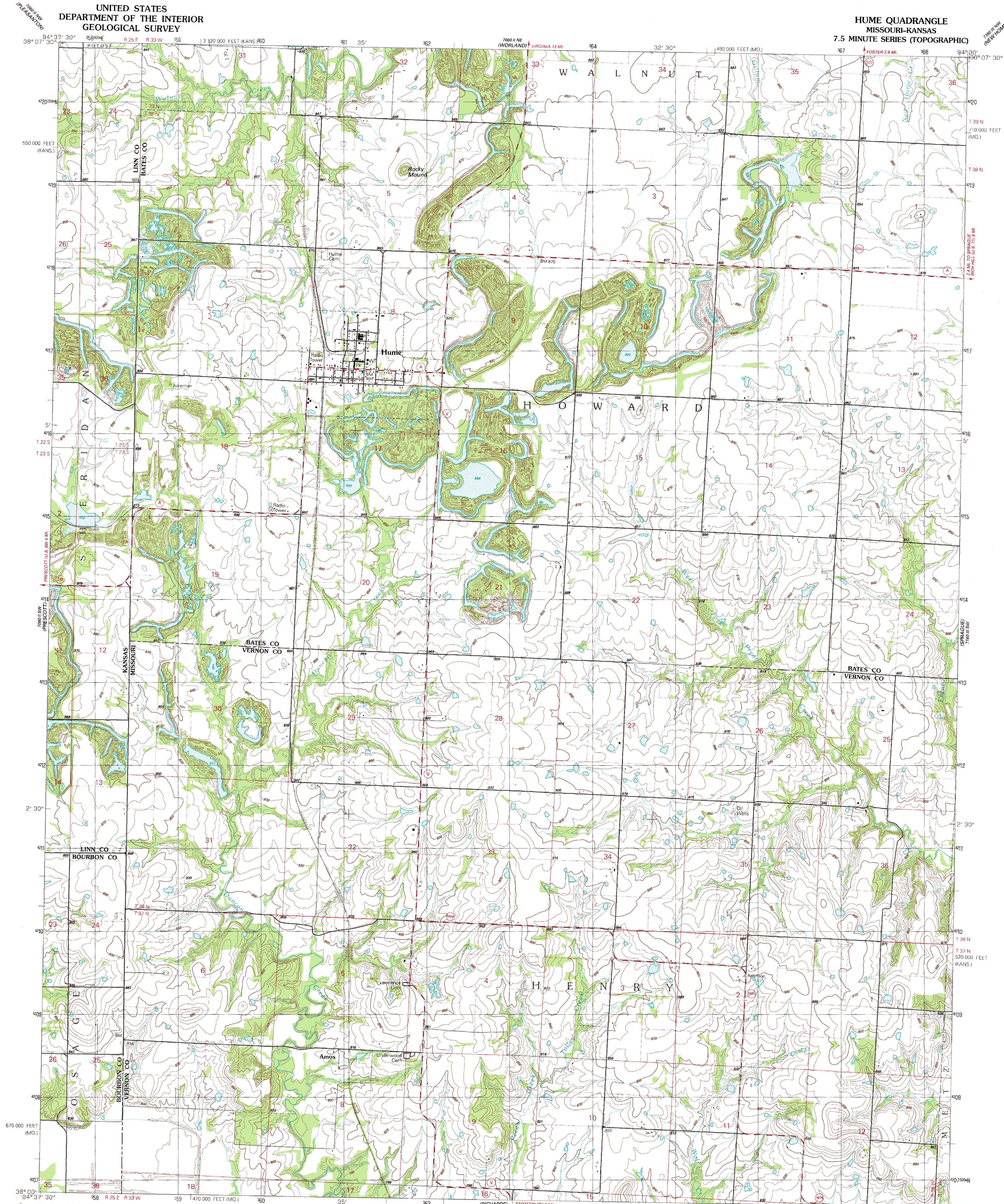


UNITED STATES
DEPARTMENT OF THE INTERIOR
GEOLOGICAL SURVEY

HUME QUADRANGLE
MISSOURI-KANSAS
7.5 MINUTE SERIES (TOPOGRAPHIC)



Produced by the United States Geological Survey

Control by USGS and NOS/NOAA

Compiled from aerial photographs taken 1986

Field checked 1989. Map edited 1991

Projection: Missouri coordinate system, west zone (transverse Mercator)

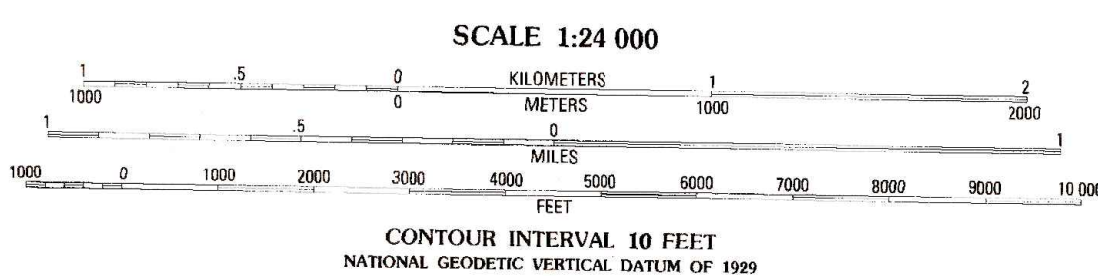
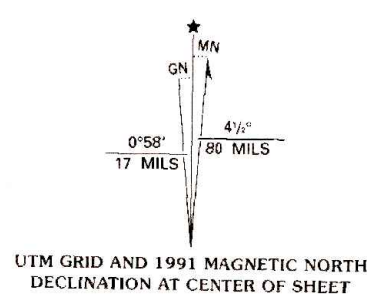
10,000-foot grid ticks: Missouri coordinate system, west zone and Kansas coordinate system, south zone

1000-meter Universal Transverse Mercator grid, zone 15

1927 North American Datum

The difference between 1927 North American Datum and North American Datum of 1983 (NAD 83) for 7.5-minute intersections is given in USGS Bulletin 1875. The NAD 83 is shown by dashed corner ticks

Fine red dashed lines indicate selected fence and field lines where generally visible on aerial photographs. This information is unchecked



ROAD CLASSIFICATION	
Primary highway, hard surface	Light-duty road, hard or improved surface
Secondary highway, hard surface	Unimproved road
Interstate Route	U. S. Route
	State Route

THIS MAP COMPLIES WITH NATIONAL MAP ACCURACY STANDARDS
FOR SALE BY U.S. GEOLOGICAL SURVEY, DENVER, COLORADO 80225 OR RESTON, VIRGINIA 22092
DIVISION OF GEOLOGY AND LAND SURVEY
MISSOURI DEPARTMENT OF NATURAL RESOURCES, ROLLA, MISSOURI 65401
AND KANSAS GEOLOGICAL SURVEY, LAWRENCE, KANSAS 66044
A FOLDER DESCRIBING TOPOGRAPHIC MAPS AND SYMBOLS IS AVAILABLE ON REQUEST

HUME, MO.-KANS.
38094-A5-TF-024
1991

DMA 7060 II SE-SERIES V879