

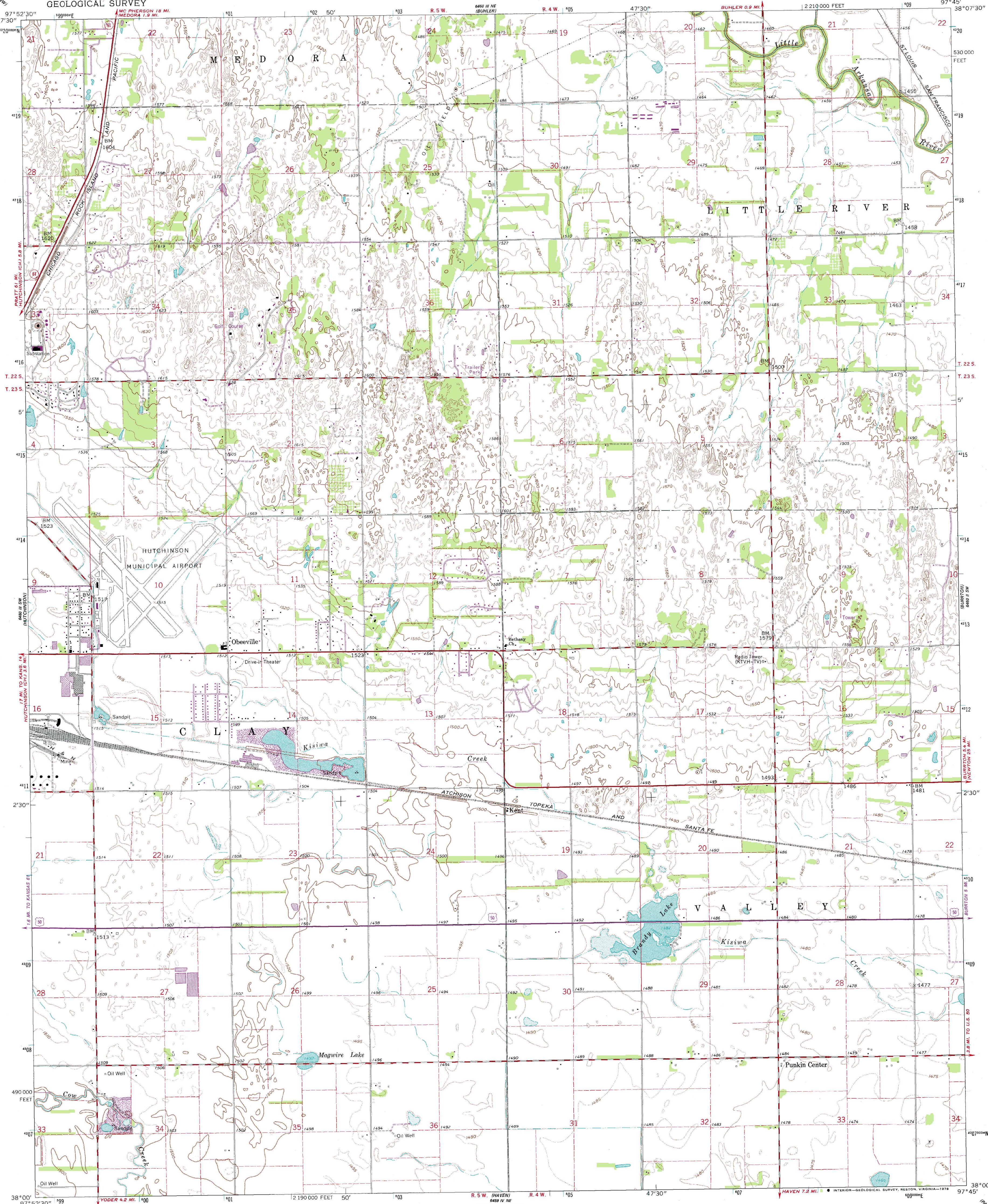
686 II NW
(HUTCHINSON) NW

UNITED STATES
DEPARTMENT OF THE INTERIOR
GEOLOGICAL SURVEY

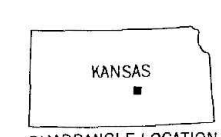
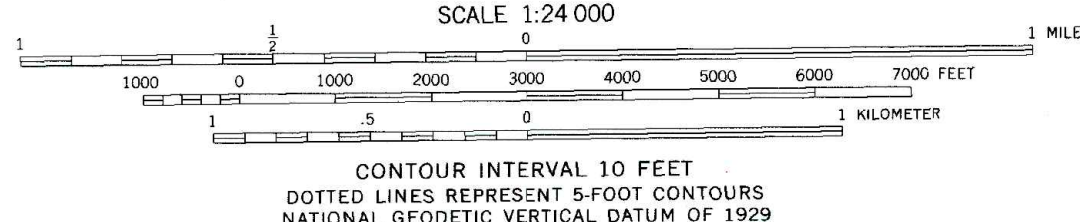
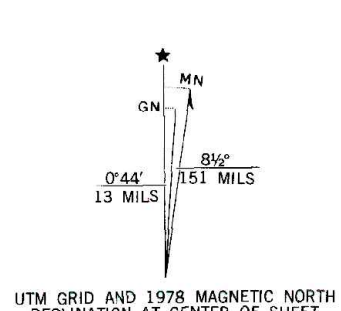
STATE OF KANSAS

HUTCHINSON SE QUADRANGLE
KANSAS—RENO CO.
7.5 MINUTE SERIES (TOPOGRAPHIC)

686 II NW
(HUTCHINSON) NW



Mapped, edited, and published by the Geological Survey
in cooperation with State of Kansas agencies
Control by USGS and USC&GS
Planimetry by photogrammetric methods from aerial photographs
taken 1959. Topography by planimetric surveys 1961
Polyconic projection. 1927 North American datum
10,000-foot grid based on Kansas coordinate system, south zone
1000-meter Universal Transverse Mercator grid ticks,
zone 14, shown in blue
Fine red dashed lines indicate selected fence and field lines where
generally visible on aerial photographs. This information is unchecked
Revisions shown in purple compiled from aerial photographs taken
1977. Map edited 1978. This information not field checked



ROAD CLASSIFICATION
Heavy duty ——— Light duty ———
Medium-duty ——— Unimproved dirt ———
U.S. Route ——— State Route ———

HUTCHINSON SE, KANS.
N3800—W9745/7.5

1961
PHOTOREVISED 1978
AMS 6460 III SE—SERIES V878

THIS MAP COMPLIES WITH NATIONAL MAP ACCURACY STANDARDS
FOR SALE BY U.S. GEOLOGICAL SURVEY, DENVER, COLORADO 80225, OR RESTON, VIRGINIA 22092
AND STATE GEOLOGICAL SURVEY, LAWRENCE, KANSAS 66044
A FOLDER DESCRIBING TOPOGRAPHIC MAPS AND SYMBOLS IS AVAILABLE ON REQUEST