

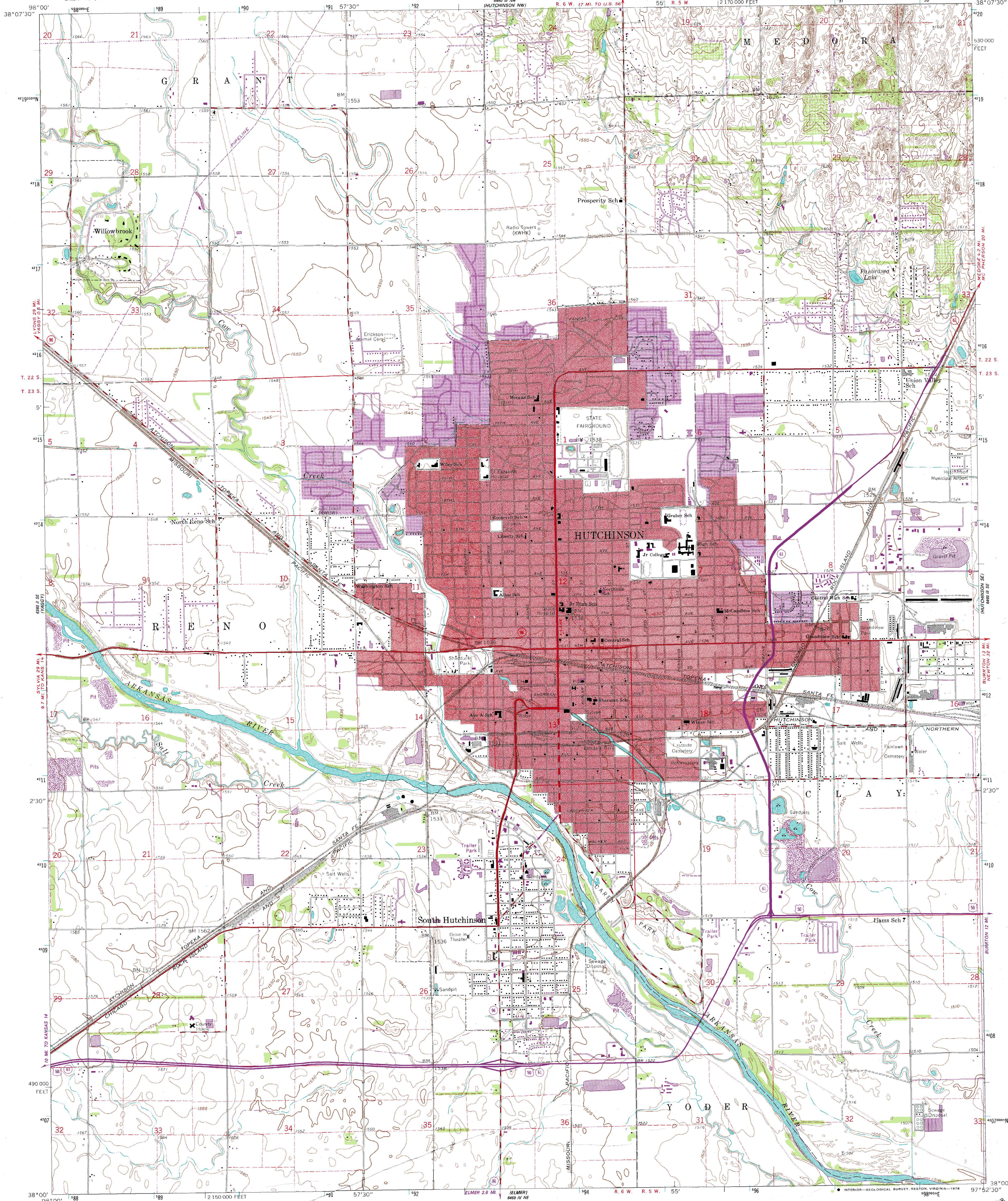
4800 NE
(HUTCHINSON)

UNITED STATES
DEPARTMENT OF THE INTERIOR
GEOLOGICAL SURVEY

STATE OF KANSAS

HUTCHINSON QUADRANGLE
KANSAS—RENO CO.
7.5 MINUTE SERIES (TOPOGRAPHIC)

4800 NE
(HUTCHINSON)



Maped, edited, and published by the Geological Survey
in cooperation with State of Kansas agencies
Control by USGS and USC&GS
Culture and drainage in part compiled from aerial photographs
taken 1959. Topography by planetable surveys 1960
Polyconic projection. 1927 North American datum
10,000-foot grid based on Kansas coordinate system, south zone
1000-meter Universal Transverse Mercator grid ticks,
zone 14, shown in blue
Red tint indicates area in which only
landmark buildings are shown
Fine red dashed lines indicate selected fence and field lines where
generally visible on aerial photographs. This information is unchecked
Revisions shown in purple compiled from aerial photographs taken
1977. Map edited 1978. This information not field checked
Purple tint indicates extension of urban areas

UTM GRID AND 1978 MAGNETIC NORTH
DECLINATION AT CENTER OF SHEET

SCALE 1:24 000
1000 0 1000 2000 3000 4000 5000 6000 7000 FEET
1 KILOMETER
CONTOUR INTERVAL 5 FEET
NATIONAL GEODETIC VERTICAL DATUM OF 1929

THIS MAP COMPLIES WITH NATIONAL MAP ACCURACY STANDARDS
FOR SALE BY U. S. GEOLOGICAL SURVEY, DENVER, COLORADO 80225, OR RESTON, VIRGINIA 22092
AND STATE GEOLOGICAL SURVEY, LAWRENCE, KANSAS 66044
A FOLDER DESCRIBING TOPOGRAPHIC MAPS AND SYMBOLS IS AVAILABLE ON REQUEST

KANSAS
QUADRANGLE LOCATION

ROAD CLASSIFICATION
Heavy-duty ——— Light-duty ———
Medium-duty ——— Unimproved dirt ———
U. S. Route ——— State Route ———

HUTCHINSON, KANS.
N3800—W9752.5/7.5
1960
PHOTOREVISED 1978
AMS 6460 III SW—SERIES V878