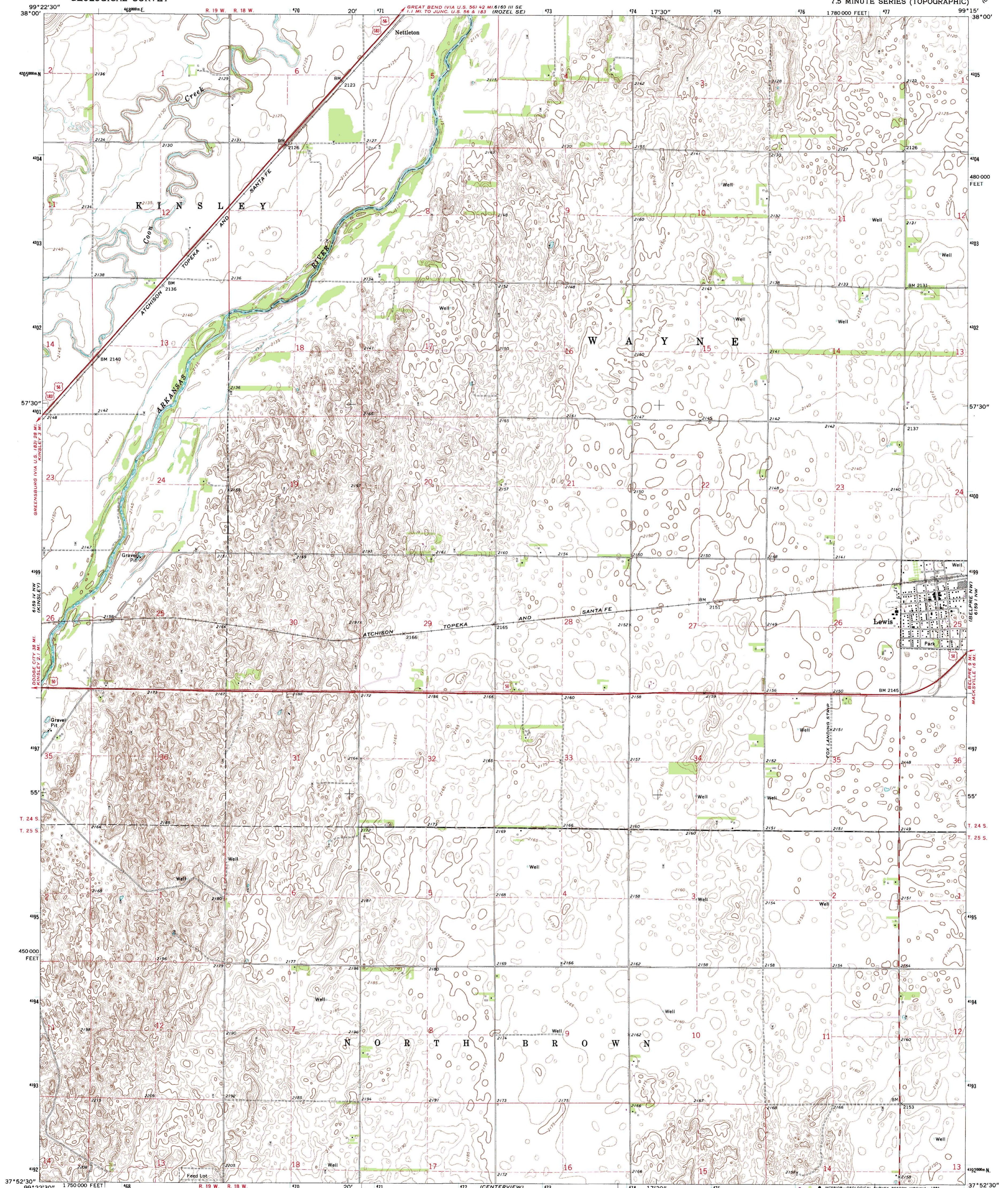


6159 1 NW
(KINSLEY SW)
6159 1 SW

UNITED STATES
DEPARTMENT OF THE INTERIOR
GEOLOGICAL SURVEY

LEWIS QUADRANGLE
KANSAS—EDWARDS CO.
7.5 MINUTE SERIES (TOPOGRAPHIC)

6159 1 SW
(KINSLEY SW)
6159 1 SW



Mapped, edited, and published by the Geological Survey
Control by USGS and USC&GS

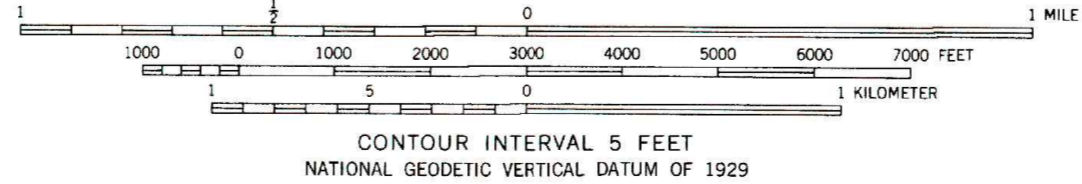
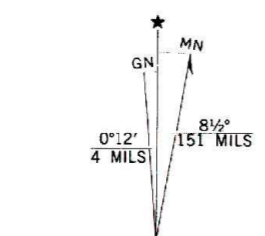
Topography by photogrammetric methods from aerial
photographs taken 1971. Field checked 1972

Projection and 10,000-foot grid ticks: Kansas coordinate
system, south zone (Lambert conformal conic)
1000-meter Universal Transverse Mercator grid ticks,
zone 14, shown in blue. 1927 North American datum

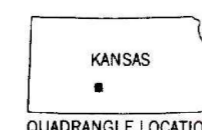
Fine red dashed lines indicate selected fence and field lines where
generally visible on aerial photographs. This information is unchecked

To place on the predicted North American Datum 1983,
move the projection lines 1 meter north and
33 meters east as shown by dashed corner ticks

Revisions shown in purple compiled from aerial photographs taken 1982 and
other sources. This information not field checked. Map edited 1984



THIS MAP COMPLIES WITH NATIONAL MAP ACCURACY STANDARDS
FOR SALE BY U.S. GEOLOGICAL SURVEY, DENVER, COLORADO 80225, OR RESTON, VIRGINIA 22092
AND KANSAS GEOLOGICAL SURVEY, LAWRENCE, KANSAS 66044
A FOLDER DESCRIBING TOPOGRAPHIC MAPS AND SYMBOLS IS AVAILABLE ON REQUEST



ROAD CLASSIFICATION	
Primary highway, hard surface	Light-duty road, hard or improved surface
Secondary highway, hard surface	Unimproved road
Interstate Route	U. S. Route
	State Route

LEWIS, KANS.
N3752.5-W9915/7.5

1972
PHOTOREVISED 1984
DMA 6159 IV NE—SERIES V878