



U.S. DEPARTMENT OF THE INTERIOR  
U. S. GEOLOGICAL SURVEY

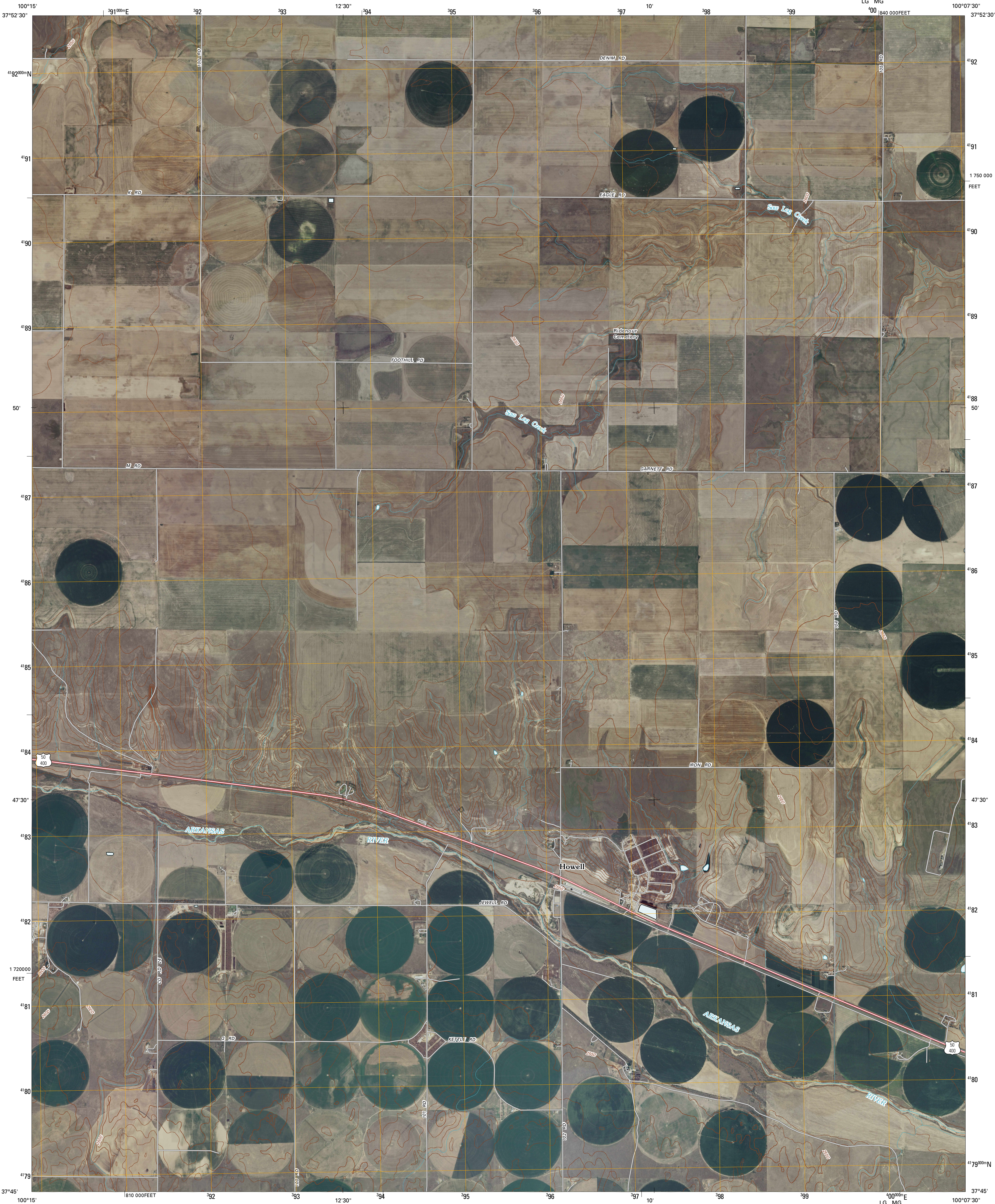


DODGE CITY SW QUADRANGLE  
KANSAS

7.5-MINUTE SERIES

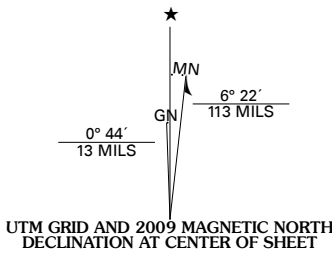
LG MG

1:840 000 FEET

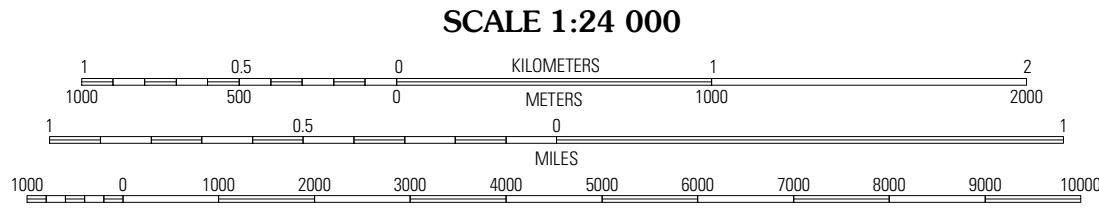


Produced by the United States Geological Survey  
North American Datum of 1983 (NAD83). Projection and  
World Geodetic System of 1984 (WGS84). Zone 14S  
10 000-foot ticks: Kansas Coordinate System of 1983  
(south zone)

Imagery.....NAIP, July 2008  
Roads.....National Transportation Dataset, 2006  
Names.....CNIS, 2008  
Hydrography.....National Hydrography Dataset, 2008  
Contours.....National Elevation Dataset, 2006

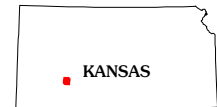


U.S. National Grid
100,000-m Square ID
436
LG   MG
Grid Zone Designation
14S



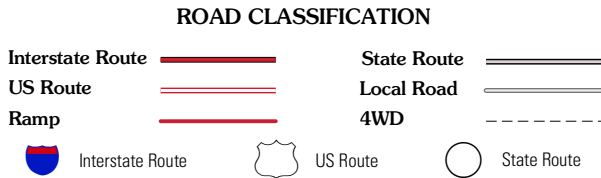
CONTOUR INTERVAL 10 FEET

This map was produced to conform with version 0.5.10 of the  
draft USGS Standards for 7.5-Minute Quadrangle Maps.  
A metadata file associated with this product is also draft version 0.5.10



QUADRANGLE LOCATION		
Cimarron NE	Dodge City NW	Dodge City NE
Cimarron	Dodge City SW	Dodge City
Hogard	Ensign	South Dodge

ADJOINING 7.5' QUADRANGLES



DODGE CITY SW, KS  
2009