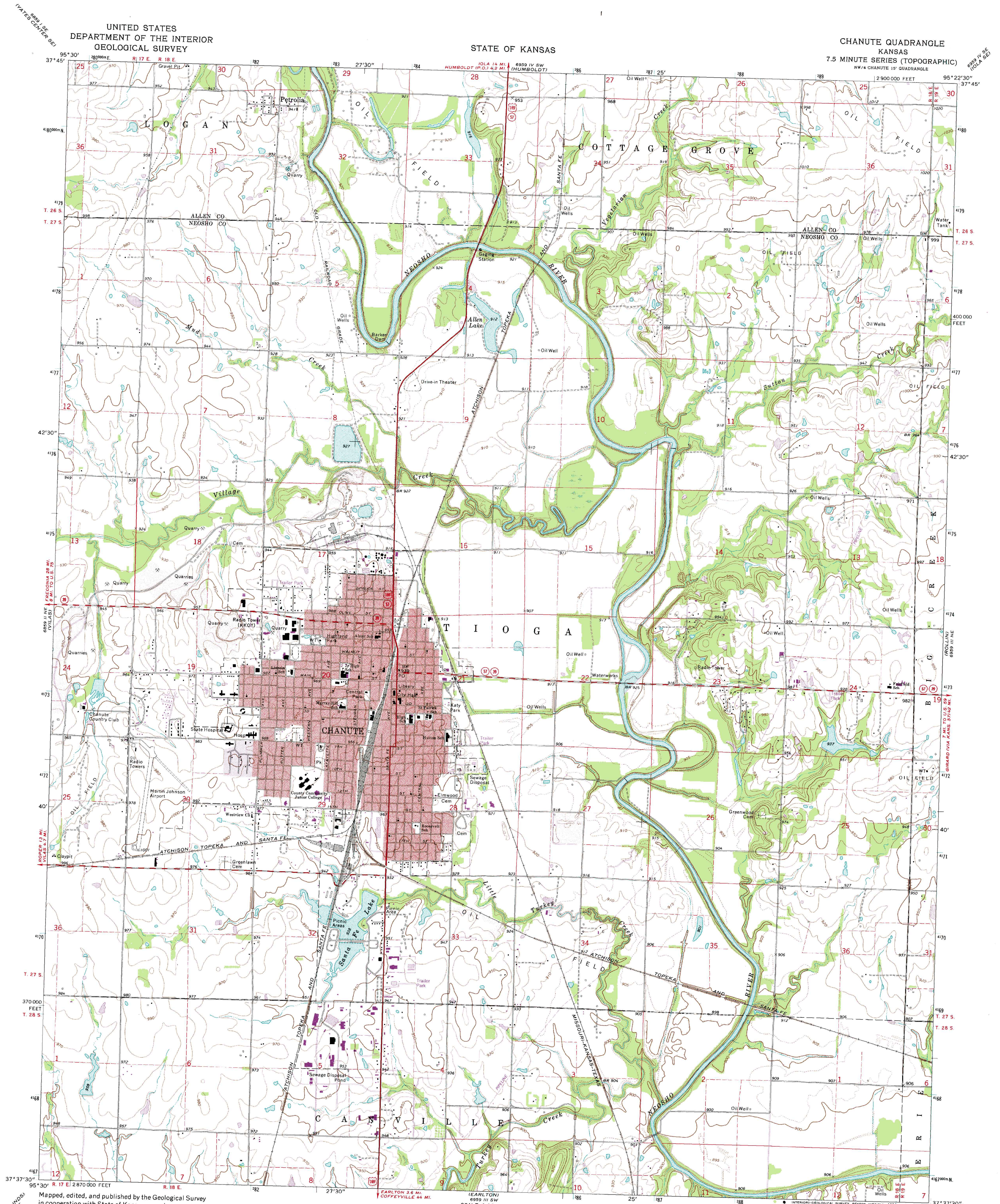


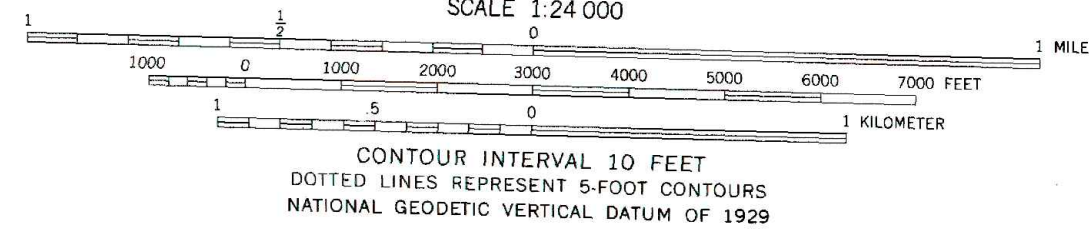
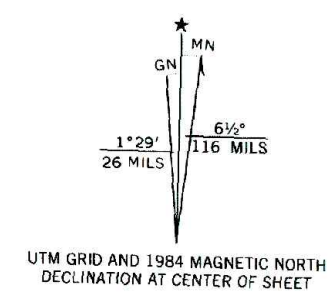
UNITED STATES
DEPARTMENT OF THE INTERIOR
GEOLOGICAL SURVEY

STATE OF KANSAS

CHANUTE QUADRANGLE
KANSAS
7.5 MINUTE SERIES (TOPOGRAPHIC)
NW 1/4 CHANUTE 15' QUADRANGLE



Maped, edited, and published by the Geological Survey
in cooperation with State of Kansas agencies
Control by USGS and USC&GS
Topography by photogrammetric methods from aerial
photographs taken 1972-73. Field checked 1973
Projection and 10,000-foot grid ticks: Kansas coordinate
system, south zone (Lambert conformal conic)
1000-meter Universal Transverse Mercator grid ticks,
zone 15, shown in blue. 1927 North American datum
Red tint indicates areas in which only landmark buildings are shown
To place on the predicted North American Datum 1983,
move the projection lines 1 meter south and
22 meters east as shown by dashed corner ticks
Revisions shown in purple compiled from aerial photographs taken 1981 and
other sources. This information not field checked. Map edited 1984
Purple tint indicates extension or urban area



ROAD CLASSIFICATION	
Primary highway, hard surface	Light-duty road, hard or improved surface
Secondary highway, hard surface	Unimproved road
Interstate Route	U. S. Route
	State Route

THIS MAP COMPLIES WITH NATIONAL MAP ACCURACY STANDARDS
FOR SALE BY U. S. GEOLOGICAL SURVEY, DENVER, COLORADO 80225, OR RESTON, VIRGINIA 22092
AND KANSAS GEOLOGICAL SURVEY, LAWRENCE, KANSAS 66044
A FOLDER DESCRIBING TOPOGRAPHIC MAPS AND SYMBOLS IS AVAILABLE ON REQUEST



CHANUTE, KANS.
NW 1/4 CHANUTE 15' QUADRANGLE
37095-F4-TF-024
1973
PHOTO-REVISED 1984
DMA 6959 III NW-SERIES V878