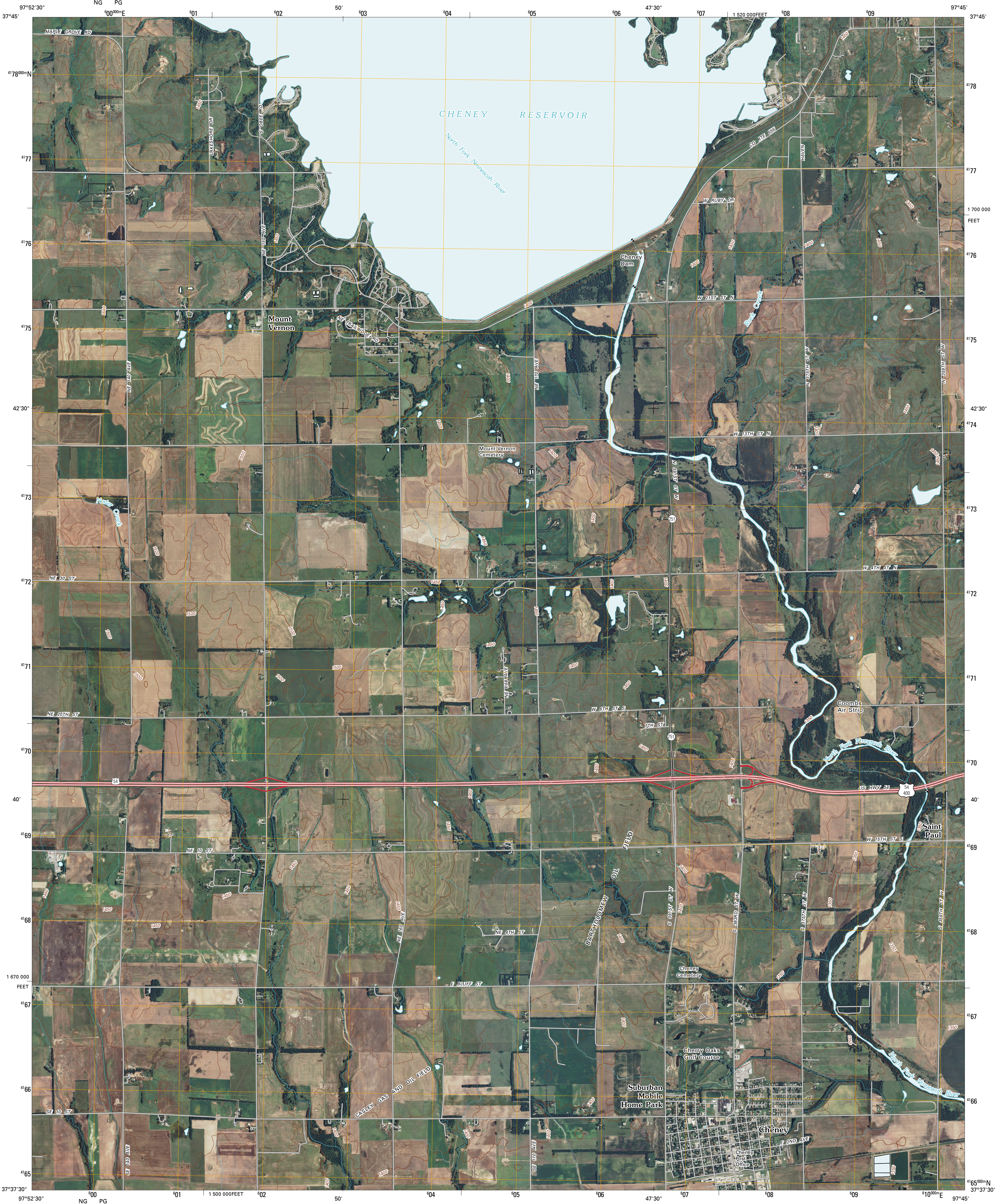




U.S. DEPARTMENT OF THE INTERIOR  
U. S. GEOLOGICAL SURVEY



CHENEY QUADRANGLE  
KANSAS  
7.5-MINUTE SERIES

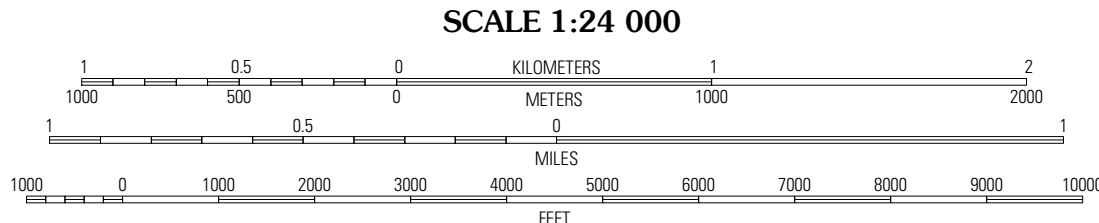


Produced by the United States Geological Survey  
North American Datum of 1983 (NAD83)  
World Geodetic System of 1984 (WGS84). Projection and  
1 000-meter grid: Universal Transverse Mercator, Zone 14S  
10 000-foot ticks: Kansas Coordinate System of 1983  
(south zone)

Imagery.....NAIP, July 2008  
Roads.....National Transportation Dataset, 2004 - 2008  
Names.....GNIS, 2008  
Hydrography.....National Hydrography Dataset, 2008  
Contours.....National Elevation Dataset, 2003

UTM GRID AND 2009 MAGNETIC NORTH  
DECLINATION AT CENTER OF SHEET

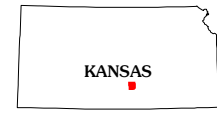
|                       |
|-----------------------|
| U.S. National Grid    |
| 100 000-m Square ID   |
| 14S                   |
| NG   PG               |
| Grid Zone Designation |
| 14S                   |



SCALE 1:24 000

CONTOUR INTERVAL 10 FEET

This map was produced to conform with version 0.5.10 of the  
draft USGS Standards for 7.5-Minute Quadrangle Maps.  
A metadata file associated with this product is also draft version 0.5.10



|          |           |              |
|----------|-----------|--------------|
| Cauleton | Haven SE  | Mount Hope   |
| Waterloo | Cheney    | Garden Plain |
| Murdock  | Cheney SE | Lake Afon    |

ADJOINING 7.5 QUADRANGLES

ROAD CLASSIFICATION

|                  |             |
|------------------|-------------|
| Interstate Route | State Route |
| US Route         | Local Road  |
| Ramp             | 4WD         |

Interstate Route US Route State Route

CHENEY, KS  
2009