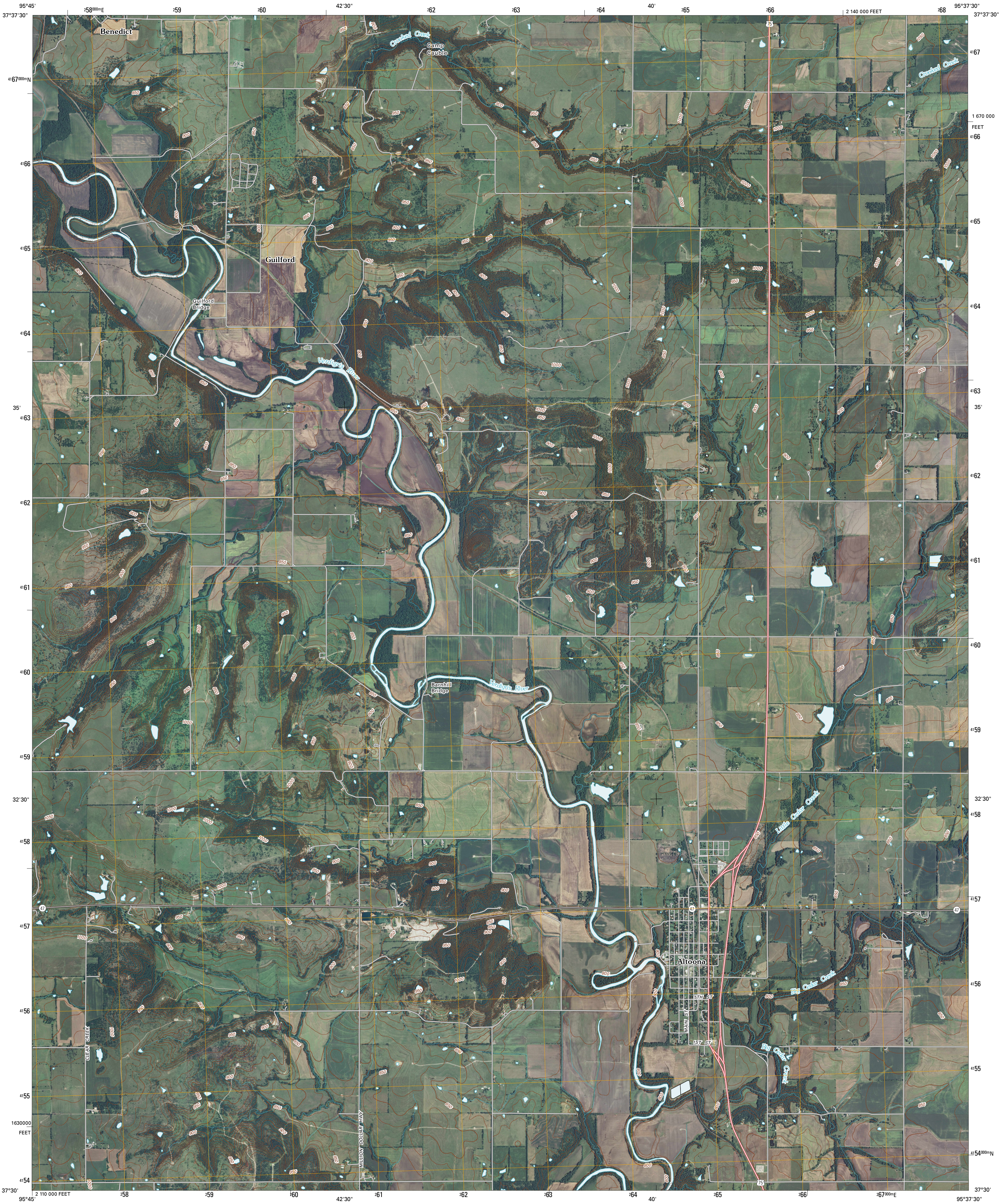




U.S. DEPARTMENT OF THE INTERIOR  
U. S. GEOLOGICAL SURVEY

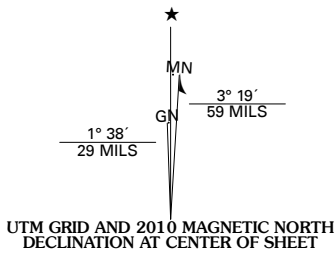


ALTOONA QUADRANGLE  
KANSAS  
7.5-MINUTE SERIES

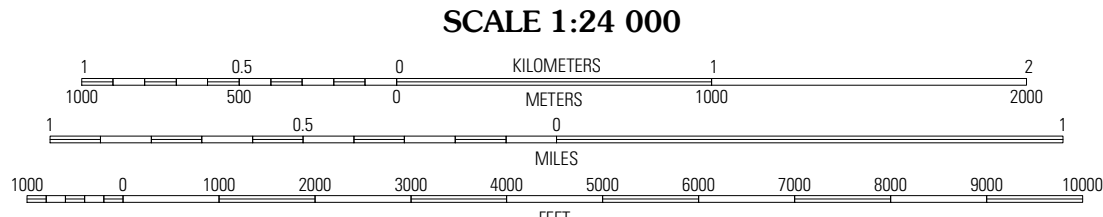


Produced by the United States Geological Survey  
North American Datum of 1983 (NAD83)  
World Geodetic System of 1984 (WGS84). Projection and  
1 000-meter grid: Universal Transverse Mercator, Zone 15S  
10 000-foot ticks: Kansas Coordinate System of 1983  
(south zone)

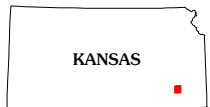
Imagery.....NAIP, July 2008  
Roads.....National Transportation Dataset, 2006  
Names.....GNIS, 2008  
Hydrography.....National Hydrography Dataset, 2008  
Contours.....National Elevation Dataset, 2006



U.S. National Grid
100,000-m Square ID
T8
Grid Zone Designation
15S

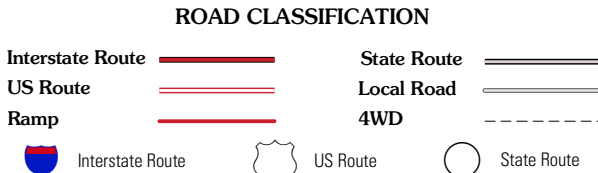


SCALE 1:24 000  
CONTOUR INTERVAL 10 FEET  
This map was produced to conform with version 0.5.10 of the  
draft USGS Standards for 7.5-Minute Quadrangle Maps.  
A metadata file associated with this product is also draft version 0.5.10



QUADRANGLE LOCATION		
Middletown	Buffalo	Vilas
Fredonia	Altoona	Five Mounds
Lafontaine	Neodesha	Morehead

ADJOINING 7.5' QUADRANGLES



ALTOONA, KS  
2010