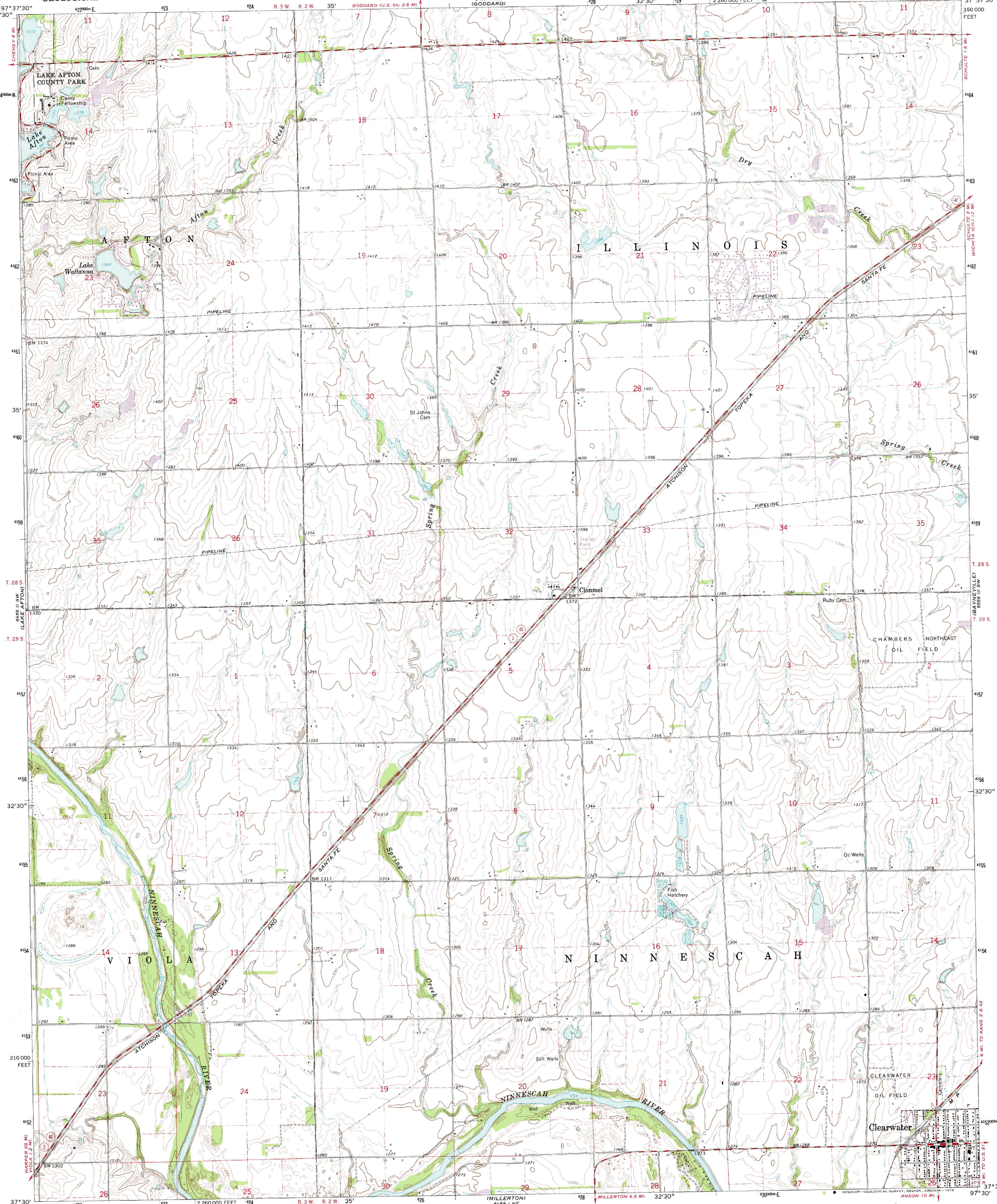


6459 11 NW  
(GARDEN PLAIN)

UNITED STATES  
DEPARTMENT OF THE INTERIOR  
GEOLOGICAL SURVEY

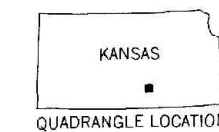
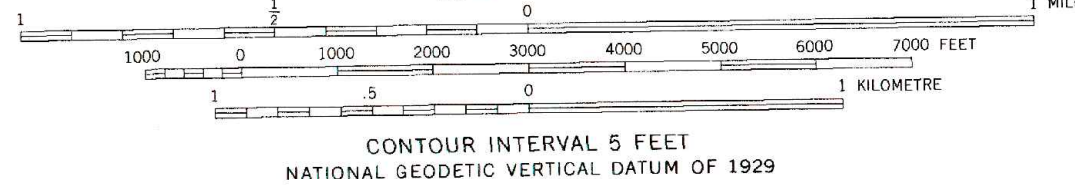
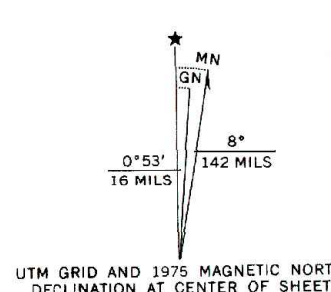
CLEARWATER QUADRANGLE  
KANSAS—SEDCWICK CO.  
7.5 MINUTE SERIES (TOPOGRAPHIC)

6459 11 NW  
(WICHITA WEST)



6459 11 NW  
(CONWAY SPRINGS)

Mapped, edited, and published by the Geological Survey  
Control by USGS and USC&GS  
Topography by photogrammetric methods from aerial  
photographs taken 1962. Field checked 1965  
Polyconic projection. 1927 North American datum  
10,000-foot grid based on Kansas coordinate system, south zone  
1000-metre Universal Transverse Mercator grid ticks,  
zone 14, shown in blue  
Fine red dashed lines indicate selected fence and field lines where  
generally visible on aerial photographs. This information is unchecked  
Revisions shown in purple include from aerial photographs  
taken 1975. This information not field checked



CLEARWATER, KANS.  
N3730—W9730/7.5

1965  
PHOTOREVISED 1975  
AMS 6459 II SE—SERIES W878

THIS MAP COMPLIES WITH NATIONAL MAP ACCURACY STANDARDS  
FOR SALE BY U. S. GEOLOGICAL SURVEY, DENVER, COLORADO 80225, OR RESTON, VIRGINIA 22092  
AND STATE GEOLOGICAL SURVEY, LAWRENCE, KANSAS 66044  
A FOLDER DESCRIBING TOPOGRAPHIC MAPS AND SYMBOLS IS AVAILABLE ON REQUEST