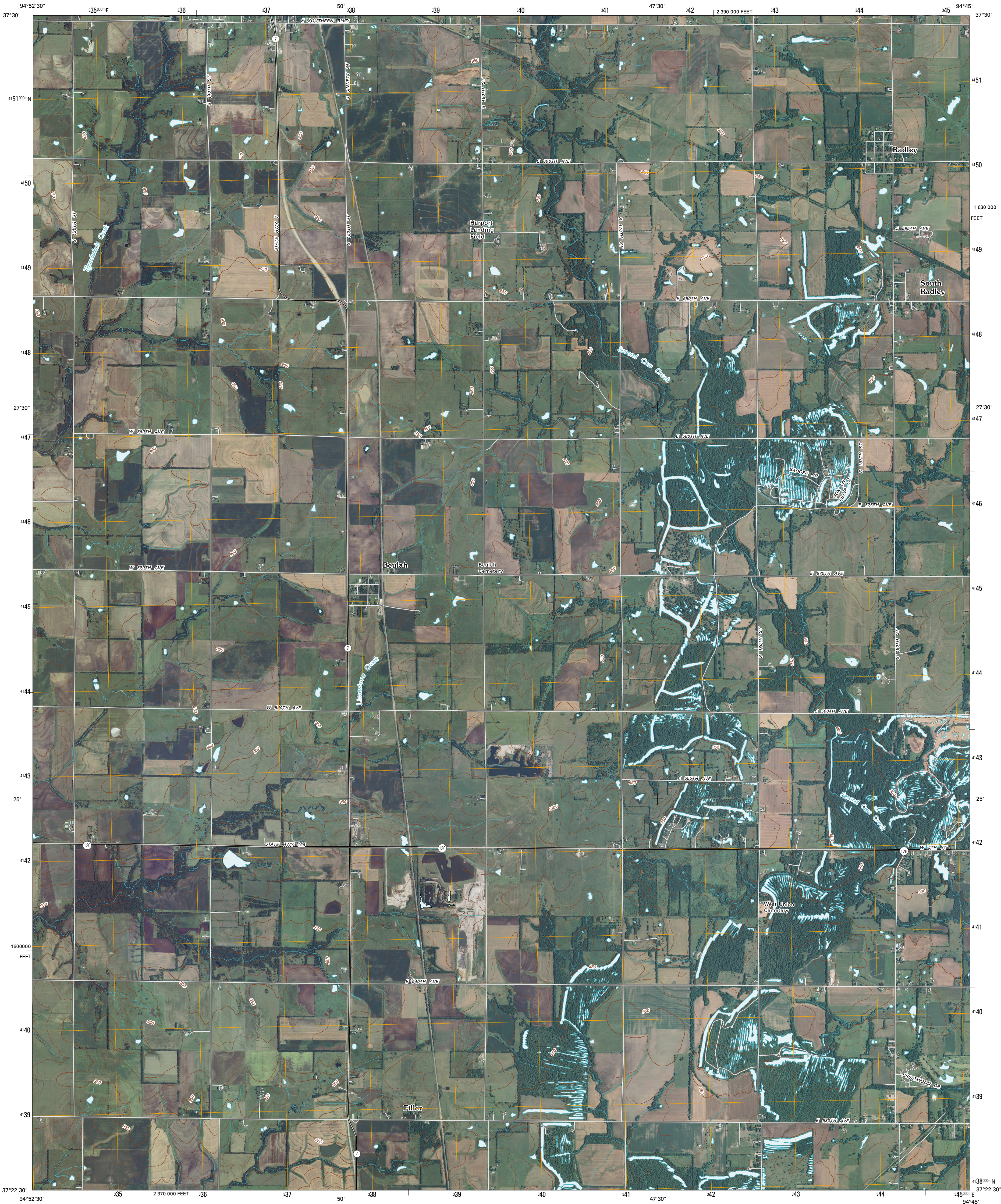




U.S. DEPARTMENT OF THE INTERIOR  
U. S. GEOLOGICAL SURVEY

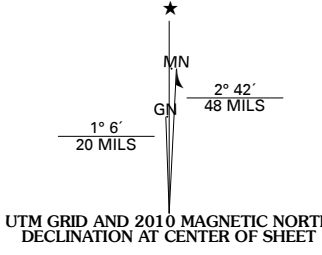


RADLEY QUADRANGLE  
KANSAS  
7.5-MINUTE SERIES

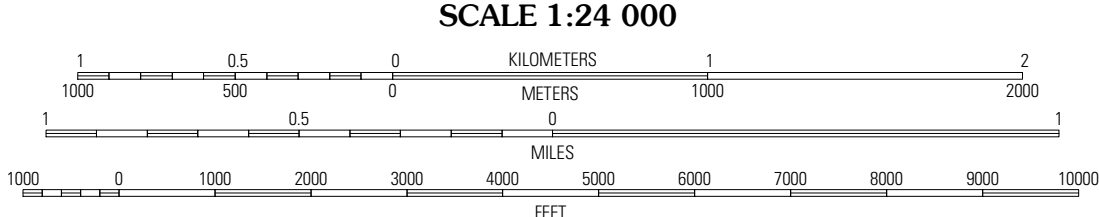


Produced by the United States Geological Survey  
North American Datum of 1983 (NAD83)  
World Geodetic System of 1984 (WGS84). Projection and  
1 000-meter grid: Universal Transverse Mercator, Zone 15S  
10 000-foot ticks: Kansas Coordinate System of 1983  
(south zone)

Imagery.....NAIP, June 2008  
Roads.....National Transportation Dataset, 2006  
Names.....GNIS, 2008  
Hydrography.....National Hydrography Dataset, 2008  
Contours.....National Elevation Dataset, 2006

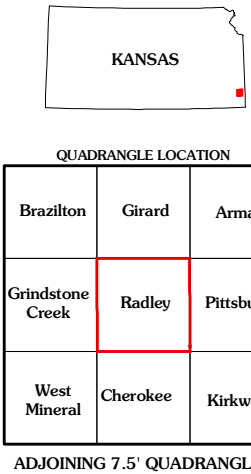


U.S. National Grid
100,000-m Square ID
UB
Grid Zone Designation
15S



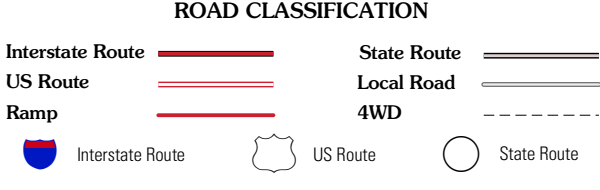
CONTOUR INTERVAL 10 FEET

This map was produced to conform with version 0.5.10 of the  
draft USGS Standards for 7.5-Minute Quadrangle Maps.  
A metadata file associated with this product is also draft version 0.5.10



Brazilton	Grindstone Creek	West Mineral
Grindstone Creek	Radley	Cherokee
Arma	Pittsburg	Kirkwood

ADJOINING 7.5 QUADRANGLES



RADLEY, KS  
2010