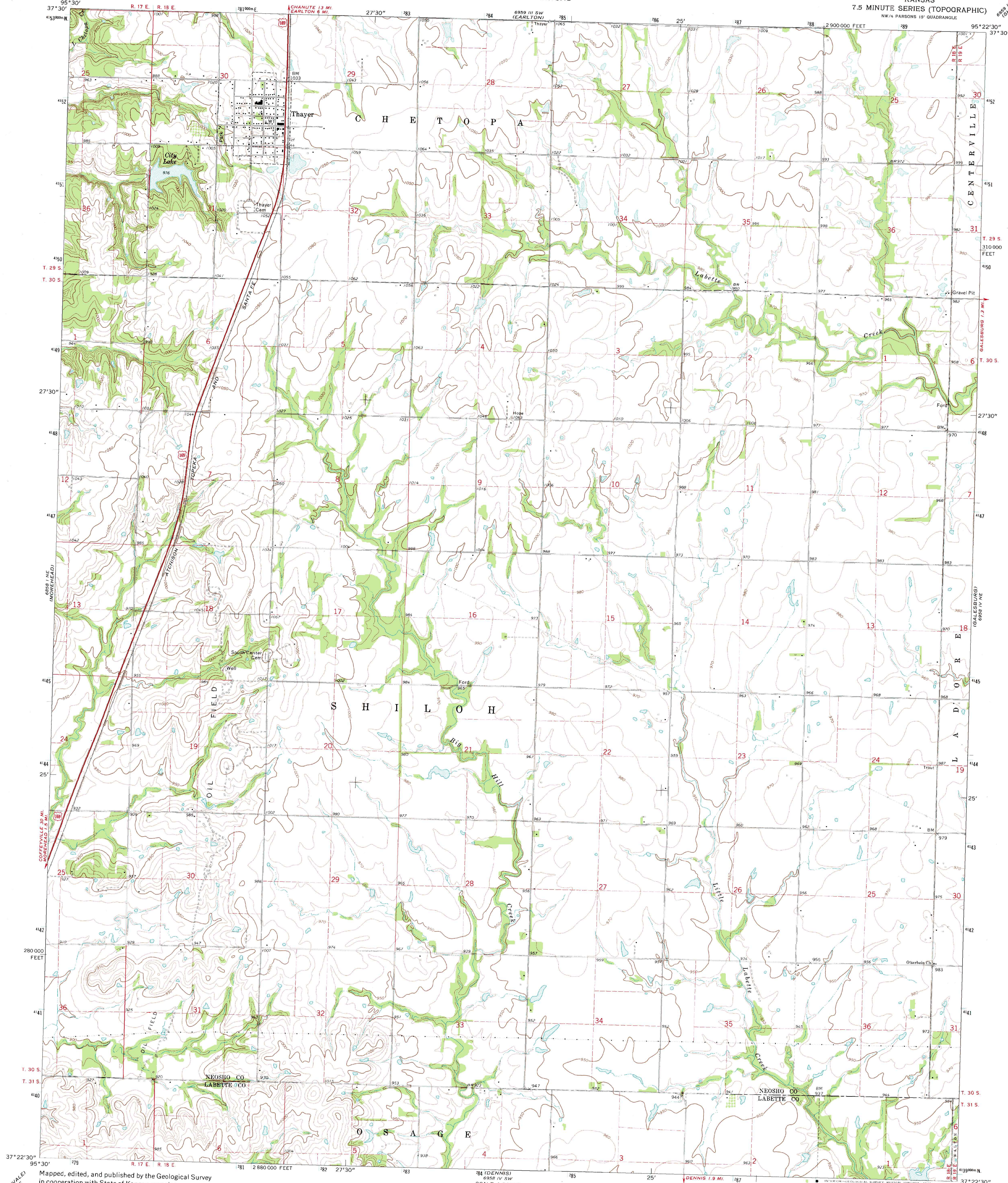


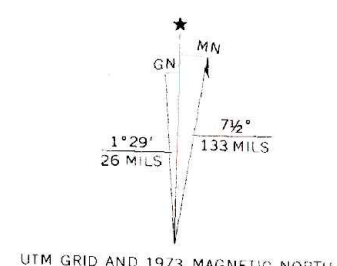
UNITED STATES  
DEPARTMENT OF THE INTERIOR  
GEOLOGICAL SURVEY

STATE OF KANSAS

THAYER QUADRANGLE  
KANSAS  
7.5 MINUTE SERIES (TOPOGRAPHIC)  
NW 1/4 PARSONS 15' QUADRANGLE



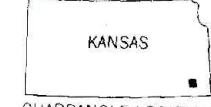
Maped, edited, and published by the Geological Survey  
in cooperation with State of Kansas agencies  
Control by USGS and USC&GS  
Topography by photogrammetric methods from aerial  
photographs taken 1972. Field checked 1973  
Projection and 10,000-foot grid ticks: Kansas coordinate  
system, south zone (Lambert conformal conic)  
1000-meter Universal Transverse Mercator grid ticks,  
zone 15, shown in blue. 1927 North American datum  
Fine red dashed lines indicate selected fence and field lines where  
generally visible on aerial photographs. This information is unchecked



SCALE 1:24,000  
CONTOUR INTERVAL 10 FEET  
DATUM IS MEAN SEA LEVEL

ROAD CLASSIFICATION  
Primary highway, hard surface  
Secondary highway, hard surface  
Light-duty road, hard or improved surface  
Unimproved road  
Interstate Route  
U.S. Route  
State Route

THIS MAP COMPLIES WITH NATIONAL MAP ACCURACY STANDARDS  
FOR SALE BY U.S. GEOLOGICAL SURVEY, DENVER, COLORADO 80225, OR RESTON, VIRGINIA 22092  
AND BY THE STATE GEOLOGICAL SURVEY, LAWRENCE, KANSAS 66044  
A FOLDER DESCRIBING TOPOGRAPHIC MAPS AND SYMBOLS IS AVAILABLE ON REQUEST



THAYER, KANS.  
NW 1/4 PARSONS 15' QUADRANGLE  
N3722.5-W9522.5/7.5

1973

AMS 6958 IV NW-SERIES V878