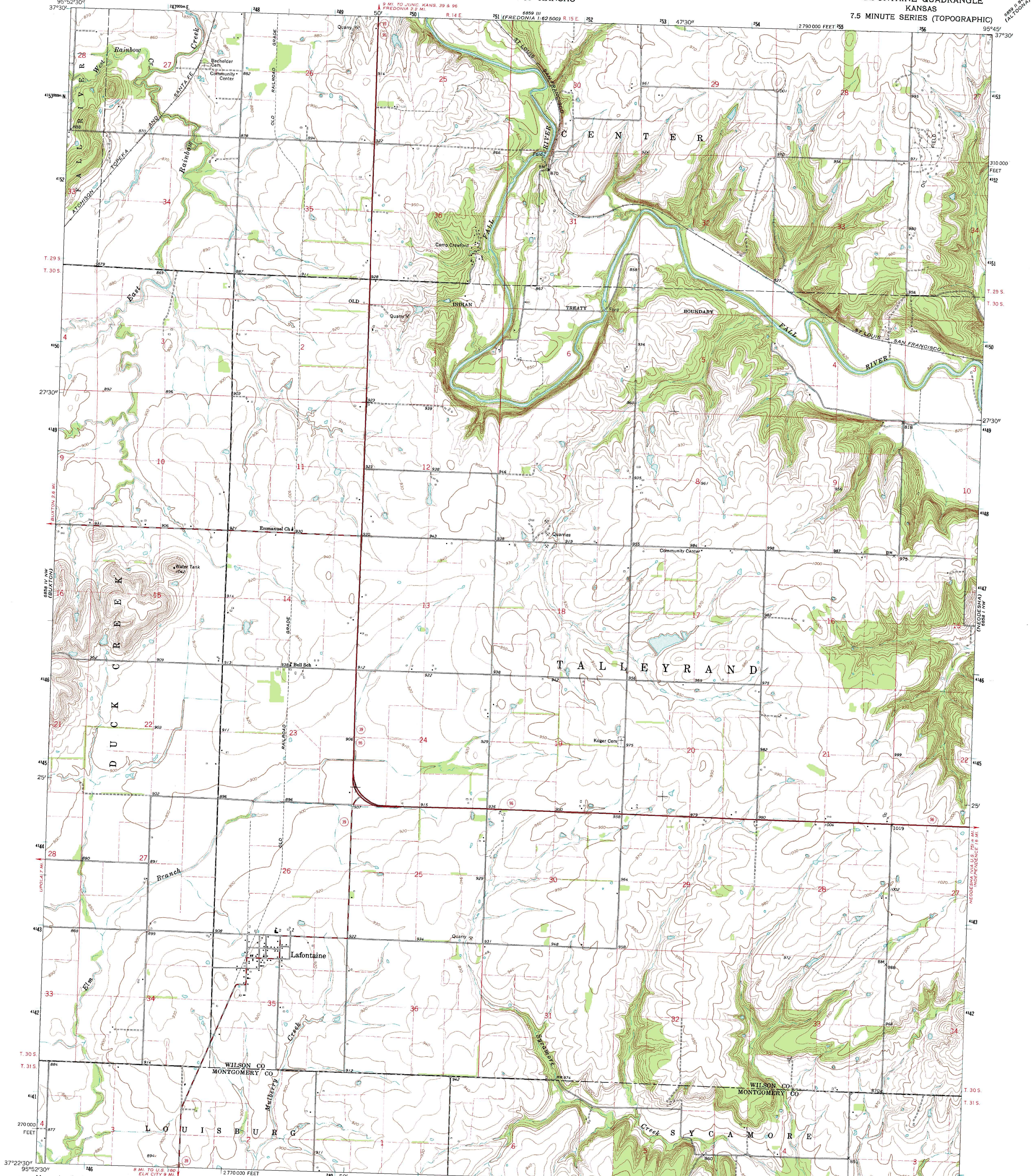


UNITED STATES
DEPARTMENT OF THE INTERIOR
GEOLOGICAL SURVEY

STATE OF KANSAS

LAFONTAINE QUADRANGLE
KANSAS
7.5 MINUTE SERIES (TOPOGRAPHIC)

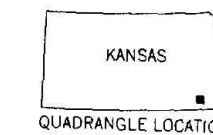


Maped, edited, and published by the Geological Survey
in cooperation with State of Kansas agencies
Control by USGS and USC&GS
Topography by photogrammetric methods from aerial
photographs taken 1962. Field checked 1963
Polyconic projection. 1927 North American datum
10,000-foot grid based on Kansas coordinate system, south zone
1000-meter Universal Transverse Mercator grid ticks,
zone 15, shown in blue
Fine red dashed lines indicate selected fence and field lines where
generally visible on aerial photographs. This information is unchecked

UTM GRID AND 1963 MAGNETIC NORTH
DECLINATION AT CENTER OF SHEET

SCALE 1:24,000
CONTOUR INTERVAL 10 FEET
DATUM IS MEAN SEA LEVEL

THIS MAP COMPLIES WITH NATIONAL MAP ACCURACY STANDARDS
FOR SALE BY U.S. GEOLOGICAL SURVEY, DENVER 25, COLORADO OR WASHINGTON 25, D. C.
AND BY THE STATE GEOLOGICAL SURVEY, LAWRENCE, KANSAS
A FOLDER DESCRIBING TOPOGRAPHIC MAPS AND SYMBOLS IS AVAILABLE ON REQUEST



ROAD CLASSIFICATION
Heavy-duty ——— Light-duty ———
Medium-duty ——— Unimproved dirt ———
State Route ———

LAFONTAINE, KANS.
N3722.5—W9545.7.5

1963
AMS 6858 IV NE—SERIES V878