

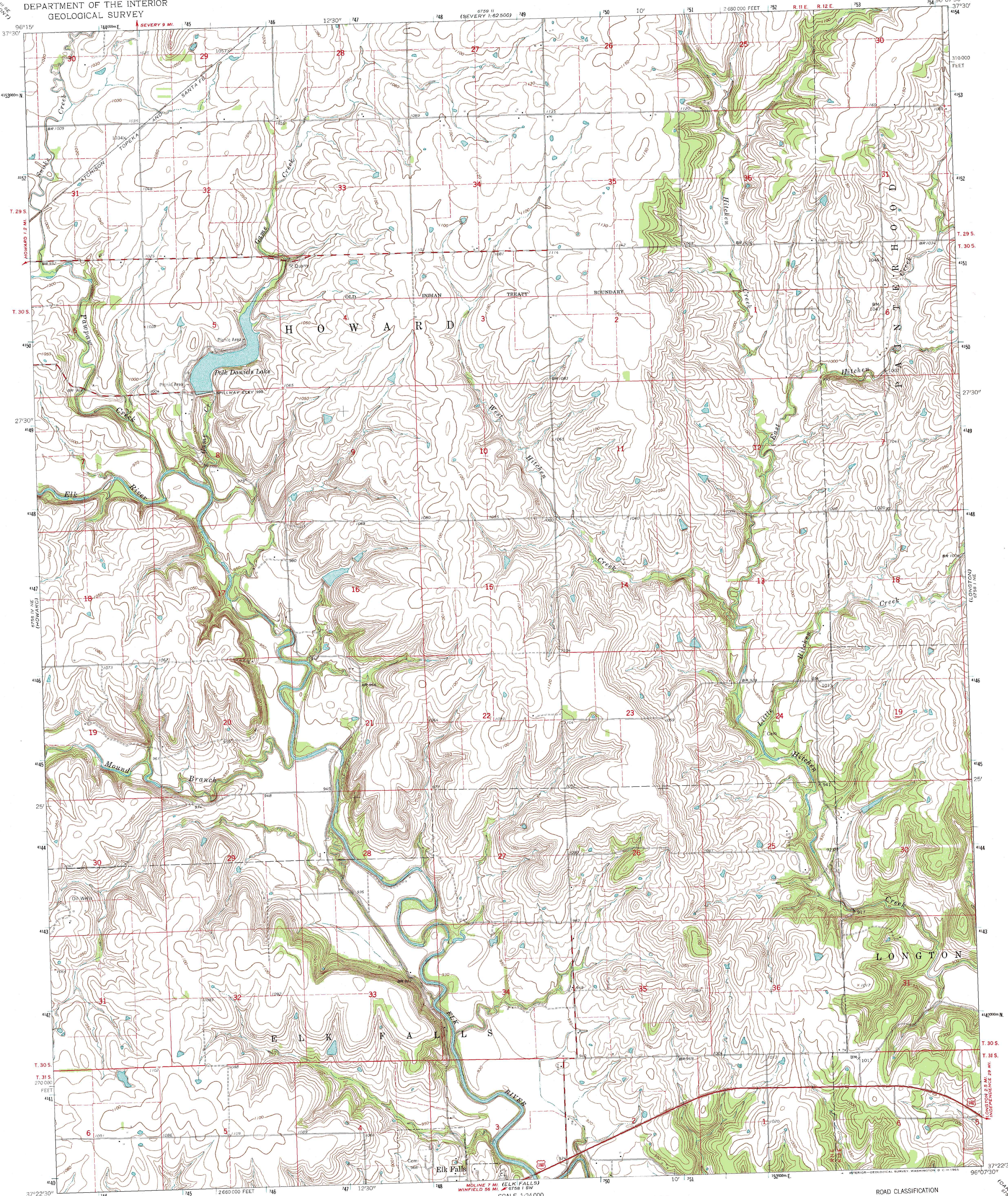
5-59 (11-55)
(REPLACES)

UNITED STATES
DEPARTMENT OF THE INTERIOR
GEOLOGICAL SURVEY

STATE OF KANSAS

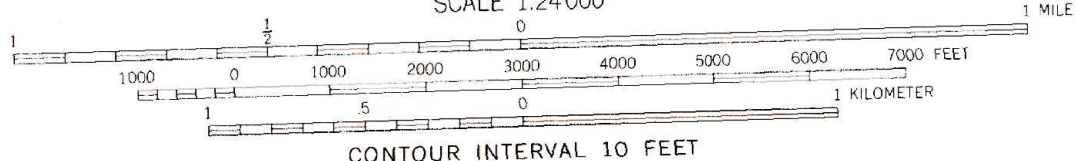
LONGTON NW QUADRANGLE
KANSAS-ELK CO.
7.5 MINUTE SERIES (TOPOGRAPHIC)

6758 I
(SEVERY 1:62500)

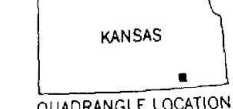


Maped, edited, and published by the Geological Survey
in cooperation with State of Kansas agencies
Control by USGS and USC&GS
Topography by photogrammetric methods from aerial
photographs taken 1962. Field checked 1964
Polyconic projection. 1927 North American datum
10,000-foot grid based on Kansas coordinate system, south zone
1000-meter Universal Transverse Mercator grid ticks,
zone 14, shown in blue
Fine red dashed lines indicate selected fence and field lines where
generally visible on aerial photographs. This information is unchecked

UTM GRID AND 1964 MAGNETIC NORTH
DECLINATION AT CENTER OF SHEET
1:4.3' 31 MILLS
9'



THIS MAP COMPLIES WITH NATIONAL MAP ACCURACY STANDARDS
FOR SALE BY U.S. GEOLOGICAL SURVEY, DENVER 25, COLORADO OR WASHINGTON 25, D.C.
AND BY THE STATE GEOLOGICAL SURVEY, LAWRENCE, KANSAS
A FOLDER DESCRIBING TOPOGRAPHIC MAPS AND SYMBOLS IS AVAILABLE ON REQUEST



ROAD CLASSIFICATION
Heavy-duty ——— Light-duty ———
Medium-duty ——— Unimproved dirt ———
U.S. Route

LONGTON NW, KANS.
N3722.5—W9607.5/7.5

1964
AMS 6758 I NW—SERIES Y878

(OAK VALLEY)

1538 0-507-20999-2
978060726960