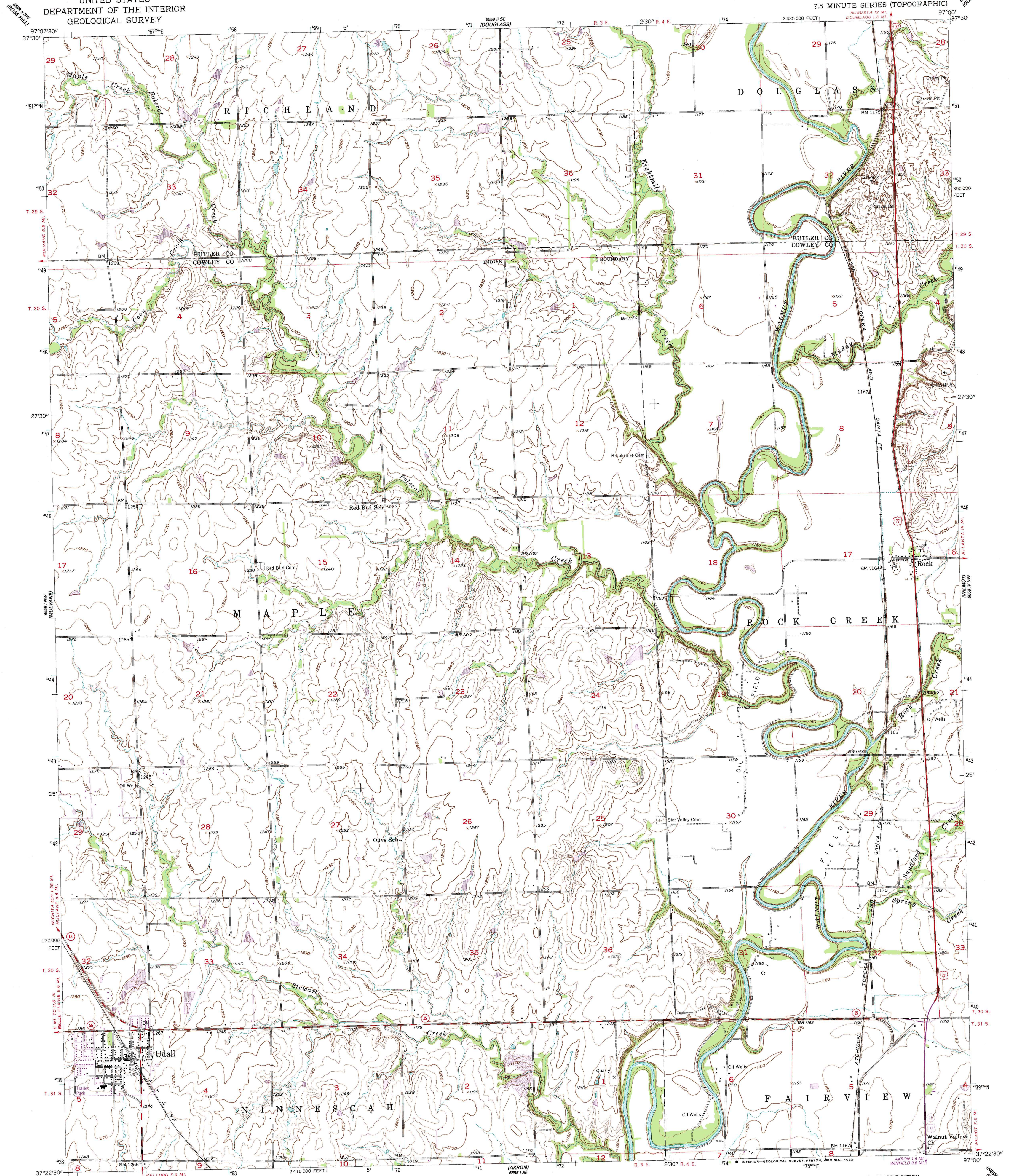


UDALL QUADRANGLE
KANSAS
7.5 MINUTE SERIES (TOPOGRAPHIC)



Control by USGS and USC&GS

Polyconic projection. 1927 North American Datum
10,000-foot grid based on Kansas coordinate system, south zone

To place on the predicted North American Datum 1983,

Revisions shown in purple compiled from aerial photographs taken 1981 and other sources. This information not field checked. Map edited 1983

A FOLDER DESCRIBING TOPOGRAPHIC MAPS AND SYMBOLS IS AVAILABLE ON REQUEST

ROAD CLASSIFICATION

Light-duty.....

Unimproved dirt.....

U. S. Route State Route

UDALL, KANS.
N3722.5—W9700/7.5

DMA 6558 I NE-SERIES V878