



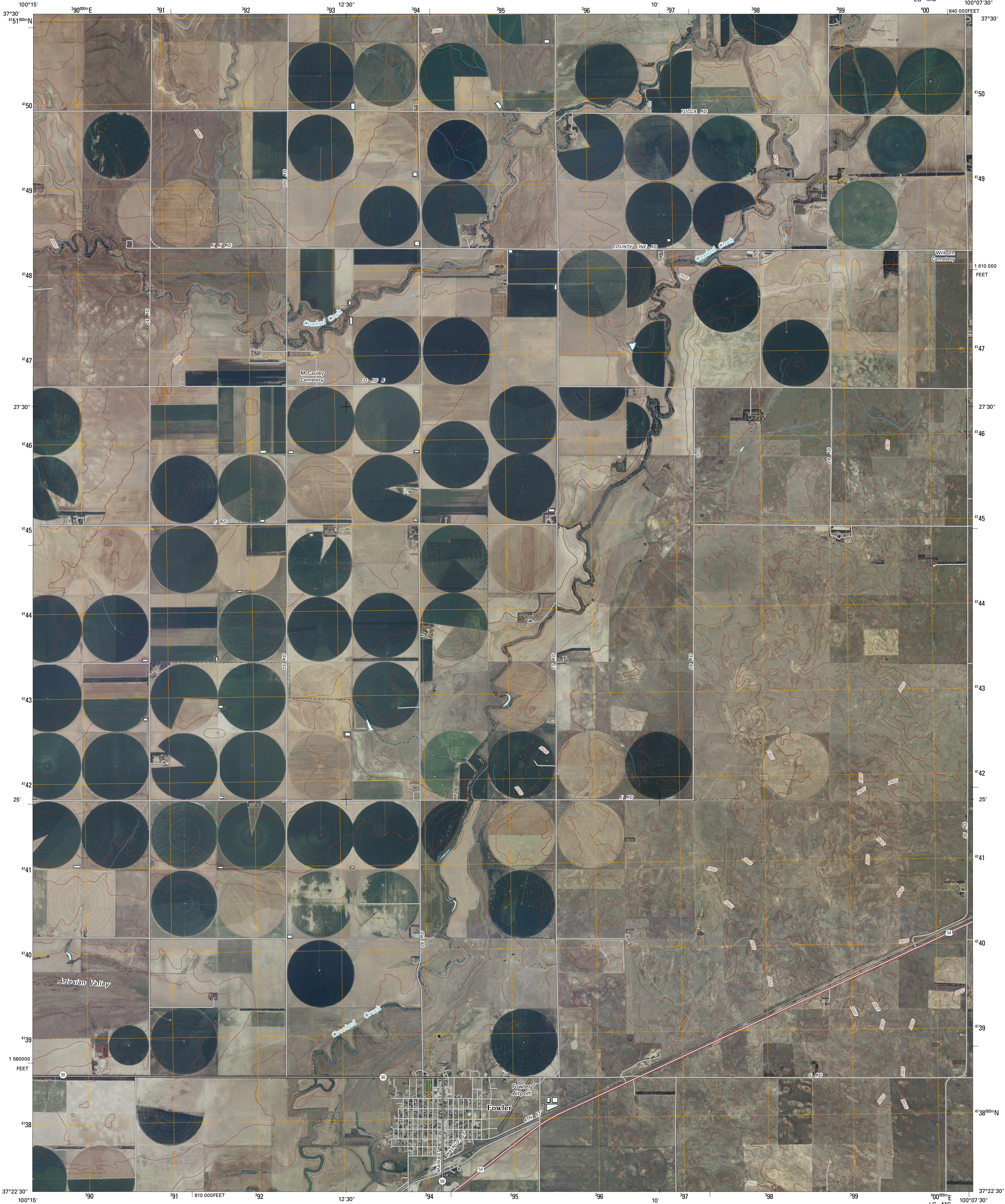
U.S. DEPARTMENT OF THE INTERIOR
U. S. GEOLOGICAL SURVEY



FOWLER QUADRANGLE
KANSAS

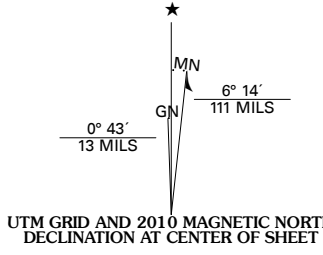
7.5-MINUTE SERIES

LG MG 100°07'30"

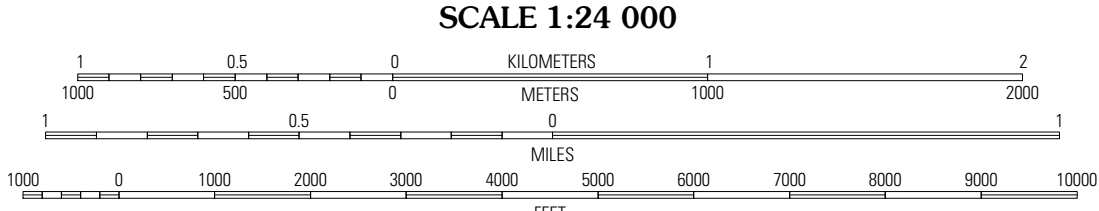


Produced by the United States Geological Survey
North American Datum of 1983 (NAD83)
World Geodetic System of 1984 (WGS84). Projection and
1 000-meter grid: Universal Transverse Mercator, Zone 14S
10 000-foot ticks: Kansas Coordinate System of 1983
(south zone)

Imagery.....NAIP, July 2008
Roads.....National Transportation Dataset, 2006
Names.....GNIS, 2008
Hydrography.....National Hydrography Dataset, 2008
Contours.....National Elevation Dataset, 2006

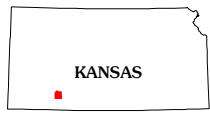


U.S. National Grid
100,000-m Square ID
1 10
LG MG
Grid Zone Designation
14S



CONTOUR INTERVAL 10 FEET

This map was produced to conform with version 0.5.10 of the
draft USGS Standards for 7.5-Minute Quadrangle Maps.
A metadata file associated with this product is also draft version 0.5.10



QUADRANGLE LOCATION		
Montezuma SE	Ensign SW	Ensign SE
Meade NE	Fowler	Minneola
Meade	Fowler SW	Fowler SE

ADJOINING 7.5 QUADRANGLES

ROAD CLASSIFICATION	
Interstate Route	State Route
US Route	Local Road
Ramp	4WD

Interstate Route US Route State Route

FOWLER, KS
2010