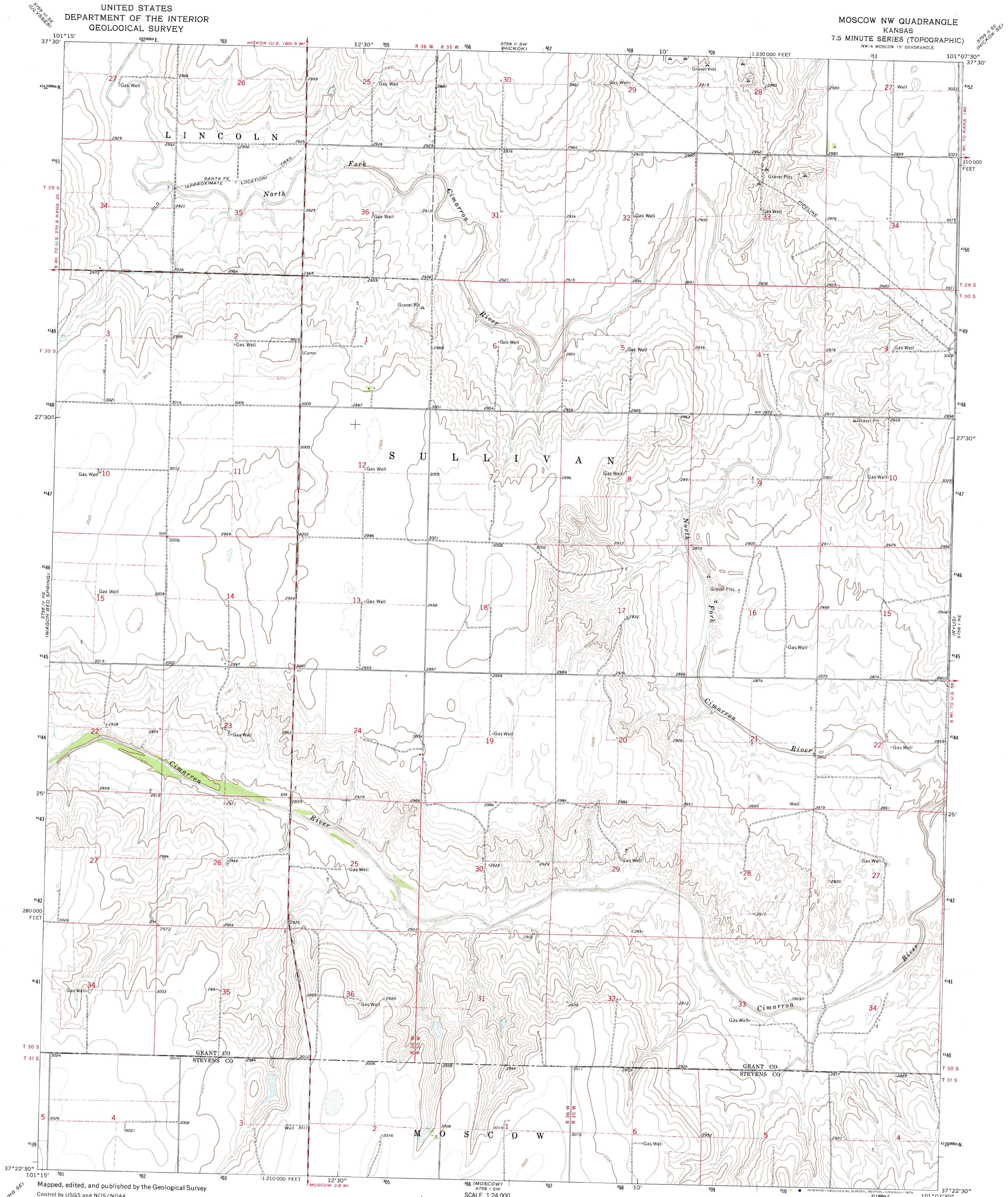


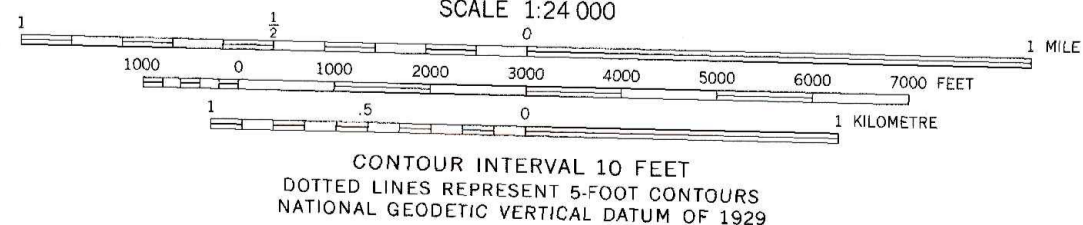
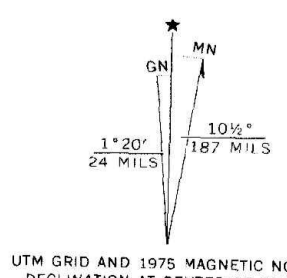
UNITED STATES  
DEPARTMENT OF THE INTERIOR  
GEOLOGICAL SURVEY

MOSCOW NW QUADRANGLE  
KANSAS  
7.5 MINUTE SERIES (TOPOGRAPHIC)  
NW/4 MOSCOW 15' QUADRANGLE

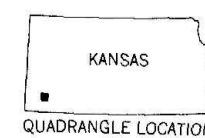


Mapped, edited, and published by the Geological Survey  
Control by USGS and NOS/NOAA

Topography by photogrammetric methods from aerial  
photographs taken 1972. Field checked 1975  
Projection and 10,000-foot grid ticks: Kansas coordinate  
system, south zone (Lambert conformal conic)  
1000-metre Universal Transverse Mercator grid ticks,  
zone 14, shown in blue. 1927 North American datum  
Fine red dashed lines indicate selected fence and field lines where  
generally visible on aerial photographs. This information is unchecked



THIS MAP COMPLIES WITH NATIONAL MAP ACCURACY STANDARDS  
FOR SALE BY U.S. GEOLOGICAL SURVEY, DENVER, COLORADO 80225, OR RESTON, VIRGINIA 22092  
AND STATE GEOLOGICAL SURVEY, LAWRENCE, KANSAS 66044  
A FOLDER DESCRIBING TOPOGRAPHIC MAPS AND SYMBOLS IS AVAILABLE ON REQUEST



ROAD CLASSIFICATION  
Primary highway, hard surface  
Secondary highway, hard surface  
Unimproved road  
Interstate Route  
U.S. Route  
State Route

MOSCOW NW, KANS.  
NW/4 MOSCOW 15' QUADRANGLE  
N3722.5-W10107.5/7.5

1975

AMS 5758 1 NW-SERIES V878