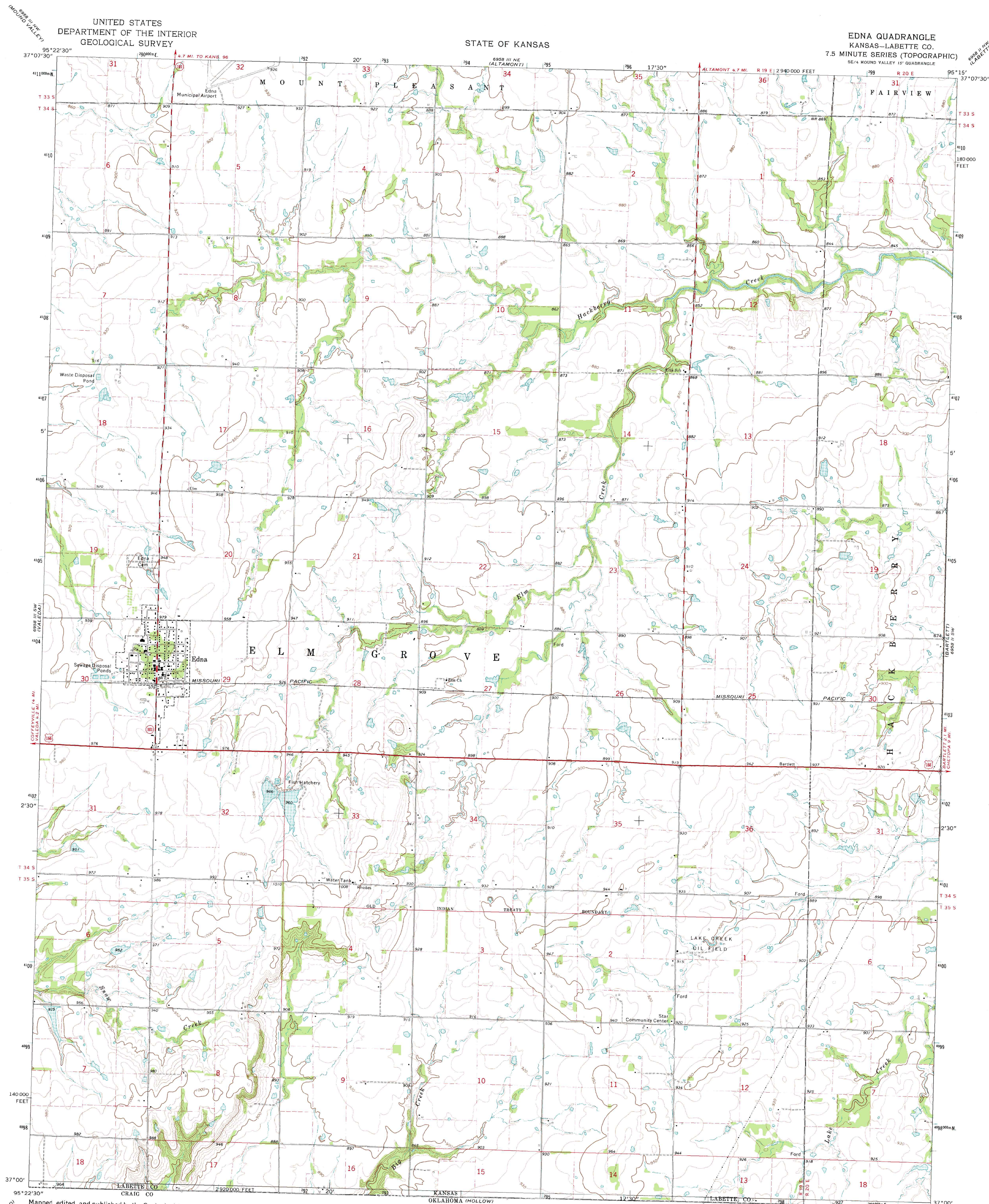


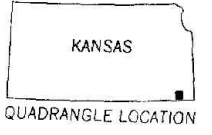
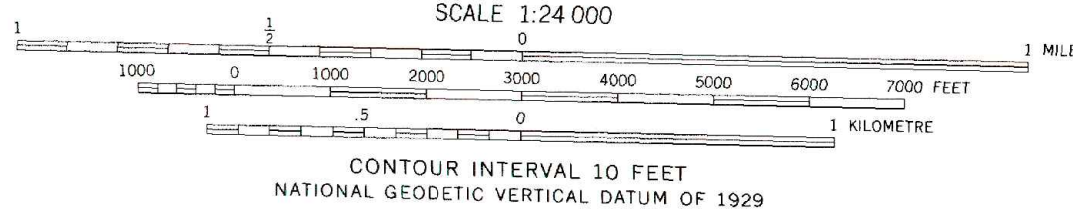
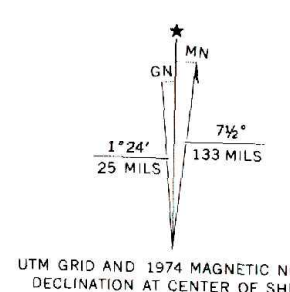
UNITED STATES
DEPARTMENT OF THE INTERIOR
GEOLOGICAL SURVEY

STATE OF KANSAS

EDNA QUADRANGLE
KANSAS-LABETTE CO.
7.5 MINUTE SERIES (TOPOGRAPHIC)
SE 1/4 MOUND VALLEY 15' QUADRANGLE



Mapped, edited, and published by the Geological Survey
in cooperation with State of Kansas agencies
Control by USGS and NOS/NOAA
Topography by photogrammetric methods from aerial
photographs taken 1973. Field checked 1974
Projection and 10,000-foot grid ticks: Kansas coordinate
system, south zone (Lambert conformal conic)
1000-metre Universal Transverse Mercator grid ticks,
zone 15, shown in blue. 1927 North American datum
Fine red dashed lines indicate selected fence and field lines where
generally visible on aerial photographs. This information is unchecked



ROAD CLASSIFICATION
Primary highway, hard surface
Secondary highway, hard surface
Unimproved road
Light-duty road, hard or improved surface
Interstate Route
U. S. Route
State Route

EDNA, KANS.
SE 1/4 MOUND VALLEY 15' QUADRANGLE
N3700-W9515/7.5

1974

AMS 6958 III SE-SERIES V878