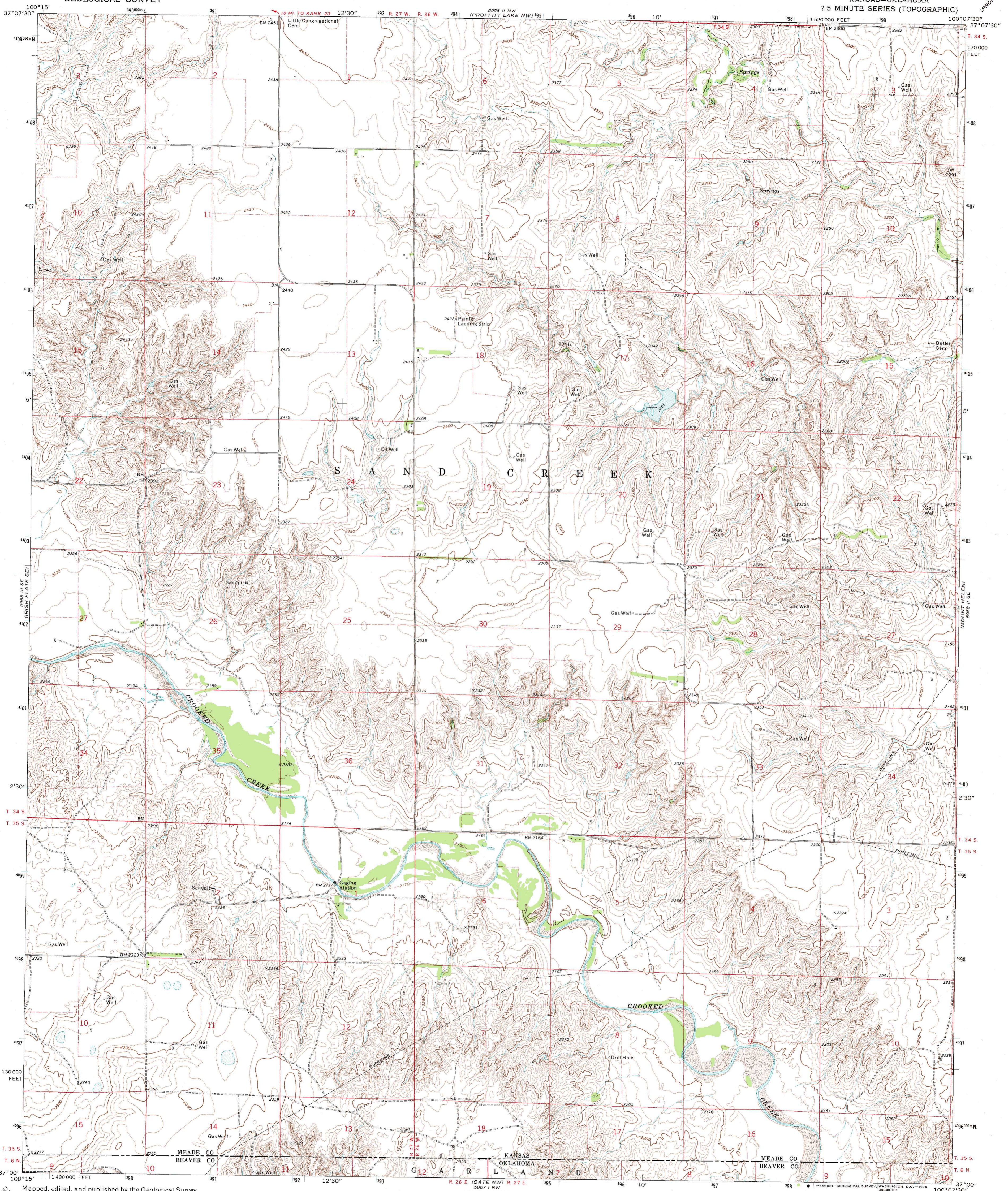


UNITED STATES  
DEPARTMENT OF THE INTERIOR  
GEOLOGICAL SURVEY

PROFFITT LAKE SW QUADRANGLE  
KANSAS-OKLAHOMA  
7.5 MINUTE SERIES (TOPOGRAPHIC)



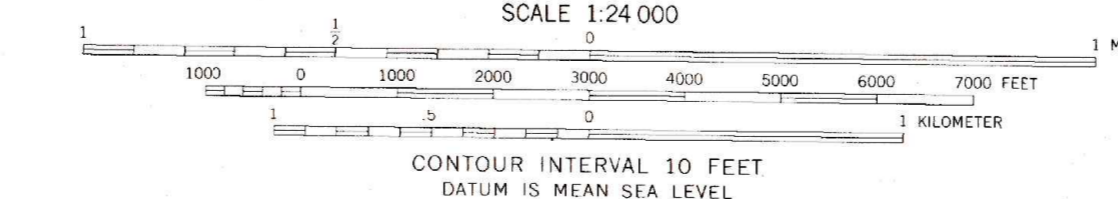
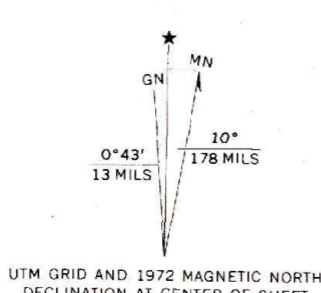
Mapped, edited, and published by the Geological Survey

Control by USGS and USC&GS

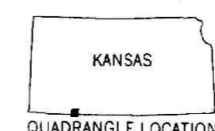
Topography by photogrammetric methods from aerial photographs taken 1971. Field checked 1972

Projection and 10,000-foot grid ticks: Kansas coordinate system, south zone (Lambert conformal conic)  
1000-meter Universal Transverse Mercator grid ticks, zone 14, shown in blue. 1927 North American datum

Fine red dashed lines indicate selected fence and field lines where generally visible on aerial photographs. This information is unchecked



THIS MAP COMPLIES WITH NATIONAL MAP ACCURACY STANDARDS  
FOR SALE BY U. S. GEOLOGICAL SURVEY, DENVER, COLORADO 80225, OR WASHINGTON, D. C. 20242.  
STATE GEOLOGICAL SURVEY, LAWRENCE, KANSAS 66044,  
AND OKLAHOMA GEOLOGICAL SURVEY, NORMAN, OKLAHOMA 73069  
A FOLDER DESCRIBING TOPOGRAPHIC MAPS AND SYMBOLS IS AVAILABLE ON REQUEST



ROAD CLASSIFICATION	
Primary highway, hard surface	Light-duty road, hard or improved surface
Secondary highway, hard surface	Unimproved road
Interstate Route	U. S. Route
	State Route

PROFFITT LAKE SW, KANS.-OKLA.  
N3700-W10007.5/7.5

1972

AMS 5958 II SW-SERIES V878