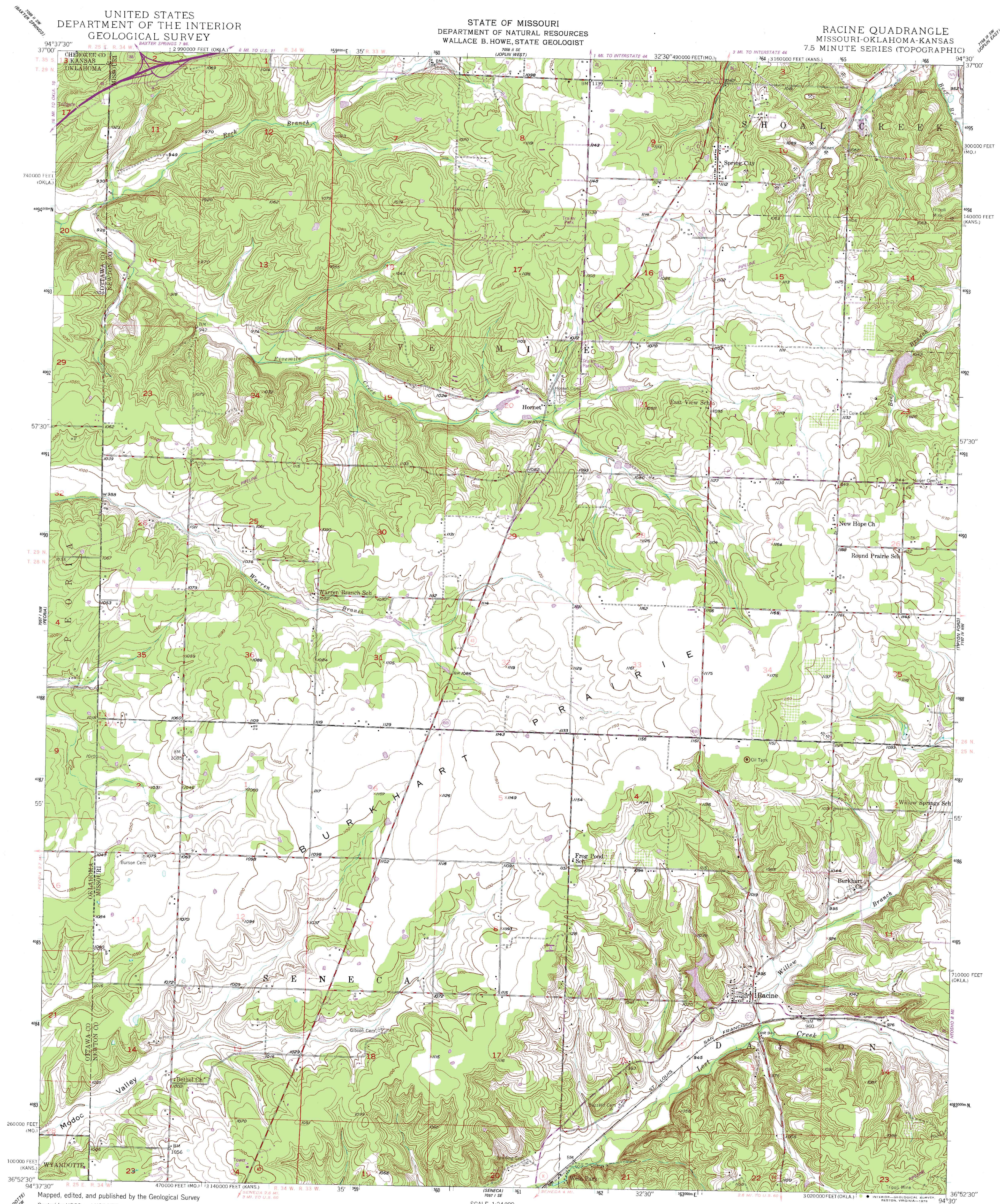


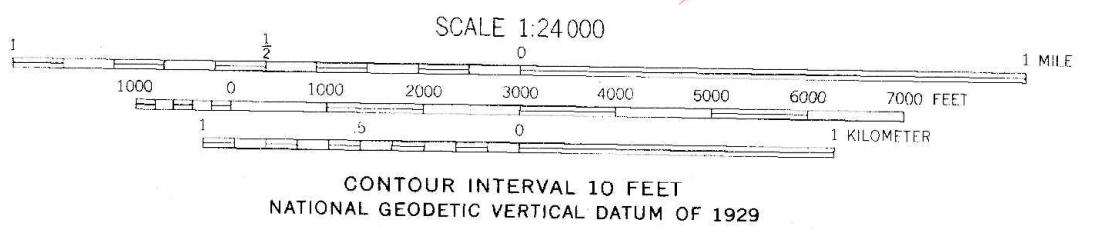
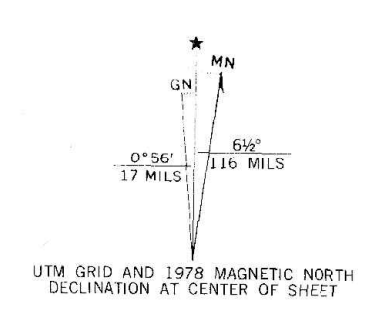
UNITED STATES
DEPARTMENT OF THE INTERIOR
GEOLOGICAL SURVEY

STATE OF MISSOURI
DEPARTMENT OF NATURAL RESOURCES
WALLACE B. HOWE, STATE GEOLOGIST

RACINE QUADRANGLE
MISSOURI-OKLAHOMA-KANSAS
7.5 MINUTE SERIES (TOPOGRAPHIC)



Maped, edited, and published by the Geological Survey
Control by USGS and USC&GS
Culture and drainage in part compiled from
aerial photographs taken 1938
Topography by plane-table methods 1949
Polyconic projection. 1927 North American datum
10,000-foot grids based on Missouri coordinate system,
west zone, Oklahoma coordinate system, north zone,
and Kansas coordinate system, south zone
1000-meter Universal Transverse Mercator grid ticks,
zone 15, shown in blue
Revisions shown in purple compiled from aerial photographs taken
1977. Map edited 1978. This information not field checked



THIS MAP COMPLIES WITH NATIONAL MAP ACCURACY STANDARDS
FOR SALE BY U. S. GEOLOGICAL SURVEY, DENVER, COLORADO 80225, OR RESTON, VIRGINIA 22092
AND THE DIVISION OF RESEARCH AND TECHNICAL INFORMATION
MISSOURI DEPARTMENT OF NATURAL RESOURCES, ROLLA, MISSOURI 65401
OKLAHOMA GEOLOGICAL SURVEY, NORMAN, OKLAHOMA 73069
AND STATE GEOLOGICAL SURVEY, LAWRENCE, KANSAS 66044
A FOLDER DESCRIBING TOPOGRAPHIC MAPS AND SYMBOLS IS AVAILABLE ON REQUEST



ROAD CLASSIFICATION
HARD-SURFACE ALL WEATHER ROADS DRY WEATHER ROADS
Heavy-duty Improved dirt
Medium-duty Unimproved dirt
Loose-surface, graded, or narrow hard-surface
U. S. Route State Route
Interstate Route
RACINE, MO.-OKLA.-KANS.
N3652.5-W9430/7.5
1949
PHOTOREVISED 1979
AMS 7057 I NE-SERIES V879