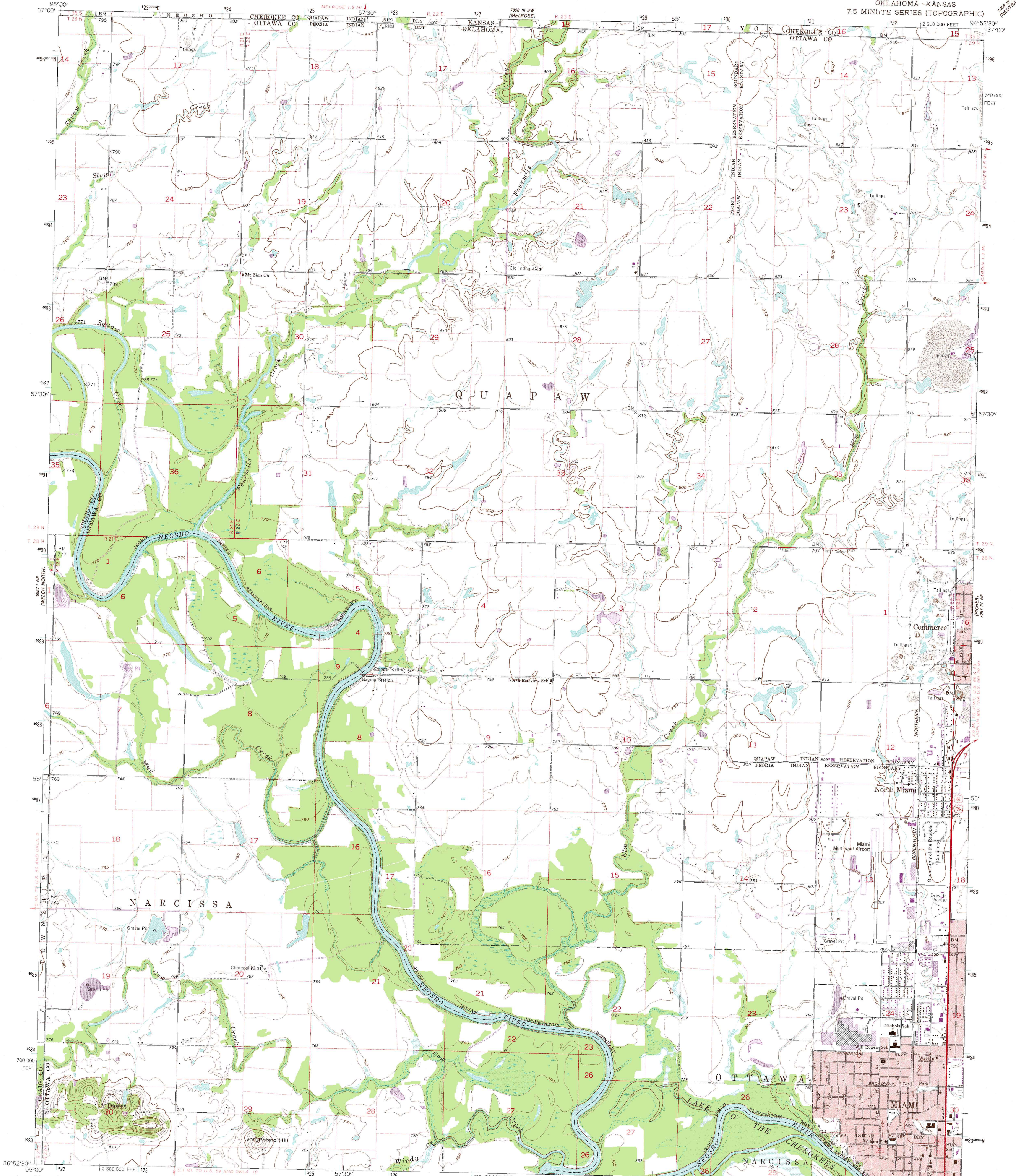


UNITED STATES  
DEPARTMENT OF THE INTERIOR  
GEOLOGICAL SURVEY

MIAMI NW QUADRANGLE  
OKLAHOMA-KANSAS  
7.5 MINUTE SERIES (TOPOGRAPHIC)



Mapped, edited, and published by the Geological Survey  
Control by USGS and USC&GS

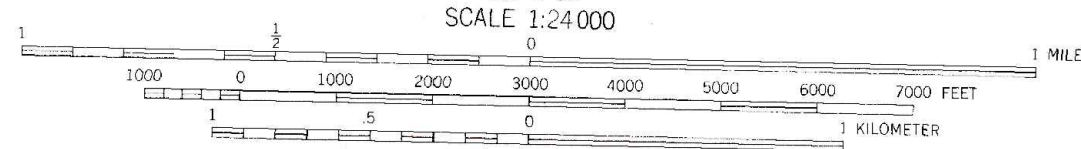
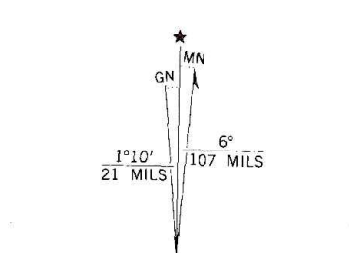
Topography by photogrammetric methods from aerial  
photographs taken 1958. Field checked 1961

Polyconic projection. 1927 North American datum  
10,000-foot grid based on Oklahoma coordinate system, north zone  
1000-meter Universal Transverse Mercator grid ticks,  
zone 15, shown in blue

Red tint indicates areas in which only landmark buildings are shown  
Areas covered by dashed light-blue pattern  
are subject to controlled inundation

To place on the predicted North American Datum 1983  
move the projection lines 3 meters south and  
20 meters east as shown by dashed corner ticks

Revisions shown in purple compiled from aerial photographs taken 1980  
and other sources. This information not field checked. Map edited 1982



CONTOUR INTERVAL 10 FEET  
DOTTED LINES REPRESENT 5-FOOT CONTOURS  
NATIONAL GEODETIC VERTICAL DATUM OF 1929

THIS MAP COMPLIES WITH NATIONAL MAP ACCURACY STANDARDS  
FOR SALE BY U.S. GEOLOGICAL SURVEY, DENVER, COLORADO 80225; OR RESTON, VIRGINIA 22092  
OKLAHOMA GEOLOGICAL SURVEY, NORMAN, OKLAHOMA 73069,  
AND STATE GEOLOGICAL SURVEY, LAWRENCE, KANSAS 66044  
A FOLDER DESCRIBING TOPOGRAPHIC MAPS AND SYMBOLS IS AVAILABLE ON REQUEST



ROAD CLASSIFICATION  
Heavy-duty ——— Light-duty ———  
Medium-duty ——— Unimproved dirt ———  
U.S. Route ———

MIAMI NW, OKLA.-KANS.  
N3652.5-W9452.5/7.5

1961  
PHOTOREVISED 1982  
DMA 7057 IV NW-SERIES V885