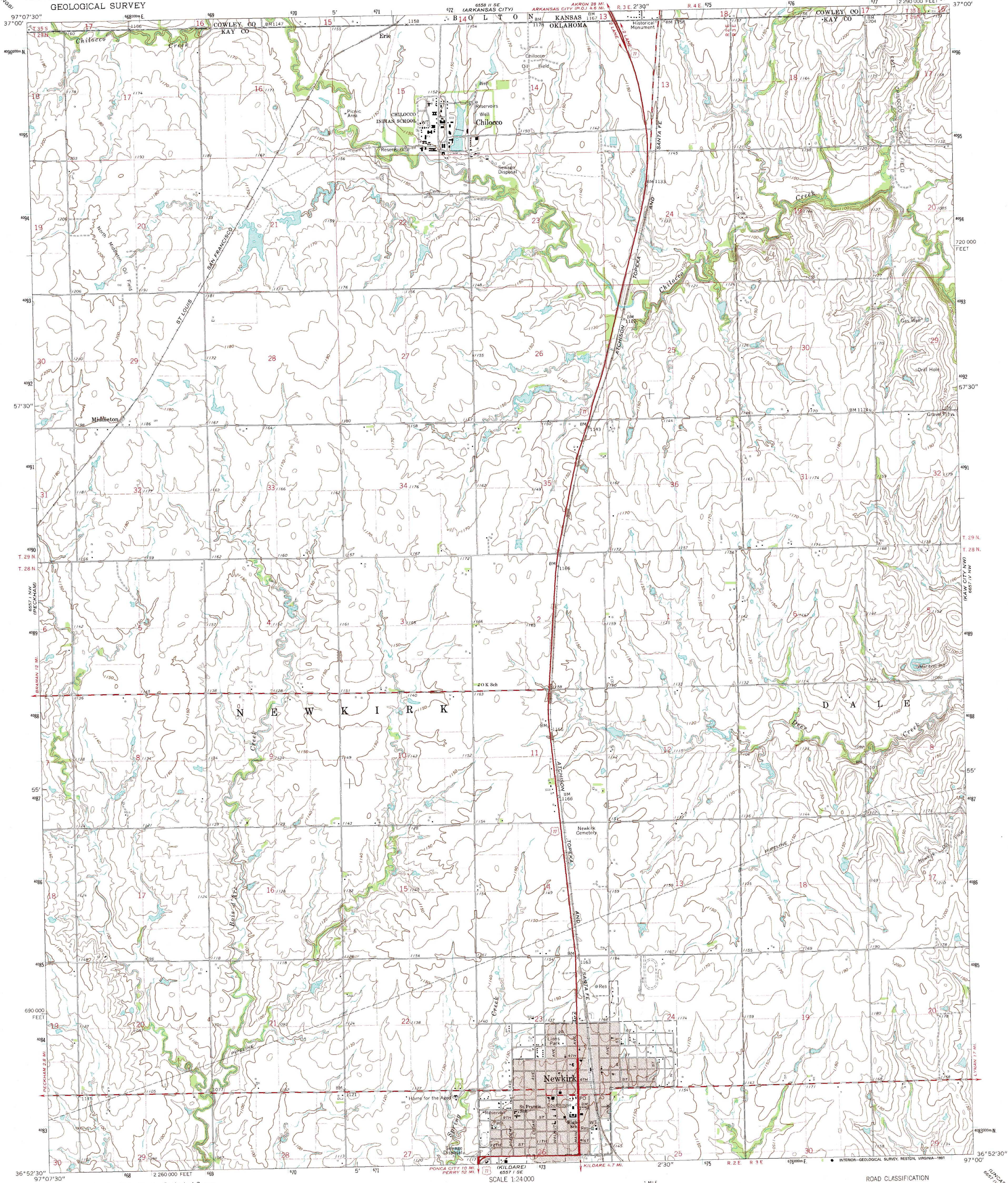


UNITED STATES
DEPARTMENT OF THE INTERIOR
GEOLOGICAL SURVEY

NEWKIRK QUADRANGLE
OKLAHOMA-KANSAS
7.5 MINUTE SERIES (TOPOGRAPHIC)



Mapped, edited, and published by the Geological Survey

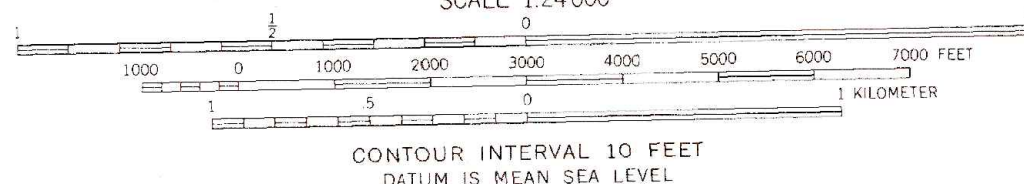
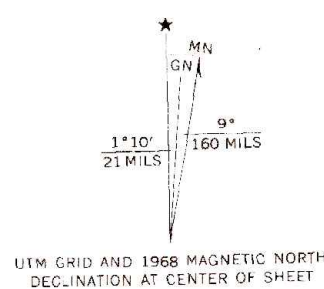
Control by USGS, USC&GS, and USCE

Topography by photogrammetric methods from aerial photographs taken 1965. Field checked 1968

Polyconic projection, 1927 North American datum
10,000-foot grid based on Oklahoma coordinate system, north zone
1000-meter Universal Transverse Mercator grid ticks, zone 14, shown in blue

Red tint indicates areas in which only landmark buildings are shown
Fine red dashed lines indicate selected fence and field lines where generally visible on aerial photographs. This information is unchecked

Map photosinspected 1976
No major culture or drainage changes observed



THIS MAP COMPLETES WITH NATIONAL MAP ACCURACY STANDARDS
FOR SALE BY U.S. GEOLOGICAL SURVEY, DENVER, COLORADO 80225, OR RESTON, VIRGINIA 22092
AND OKLAHOMA GEOLOGICAL SURVEY, NORMAN, OKLAHOMA 73069
AND KANSAS GEOLOGICAL SURVEY, LAWRENCE, KANSAS 66044
A FOLDER DESCRIBING TOPOGRAPHIC MAPS AND SYMBOLS IS AVAILABLE ON REQUEST



ROAD CLASSIFICATION	
Heavy-duty	Light-duty
Medium-duty	Unimproved dirt
	U. S. Route

NEWKIRK, OKLA.-KANS.
N3652.5-W9700/7.5

1968
PHOTOINSPECTED 1976
AMS 6557 I NE-SERIES V883