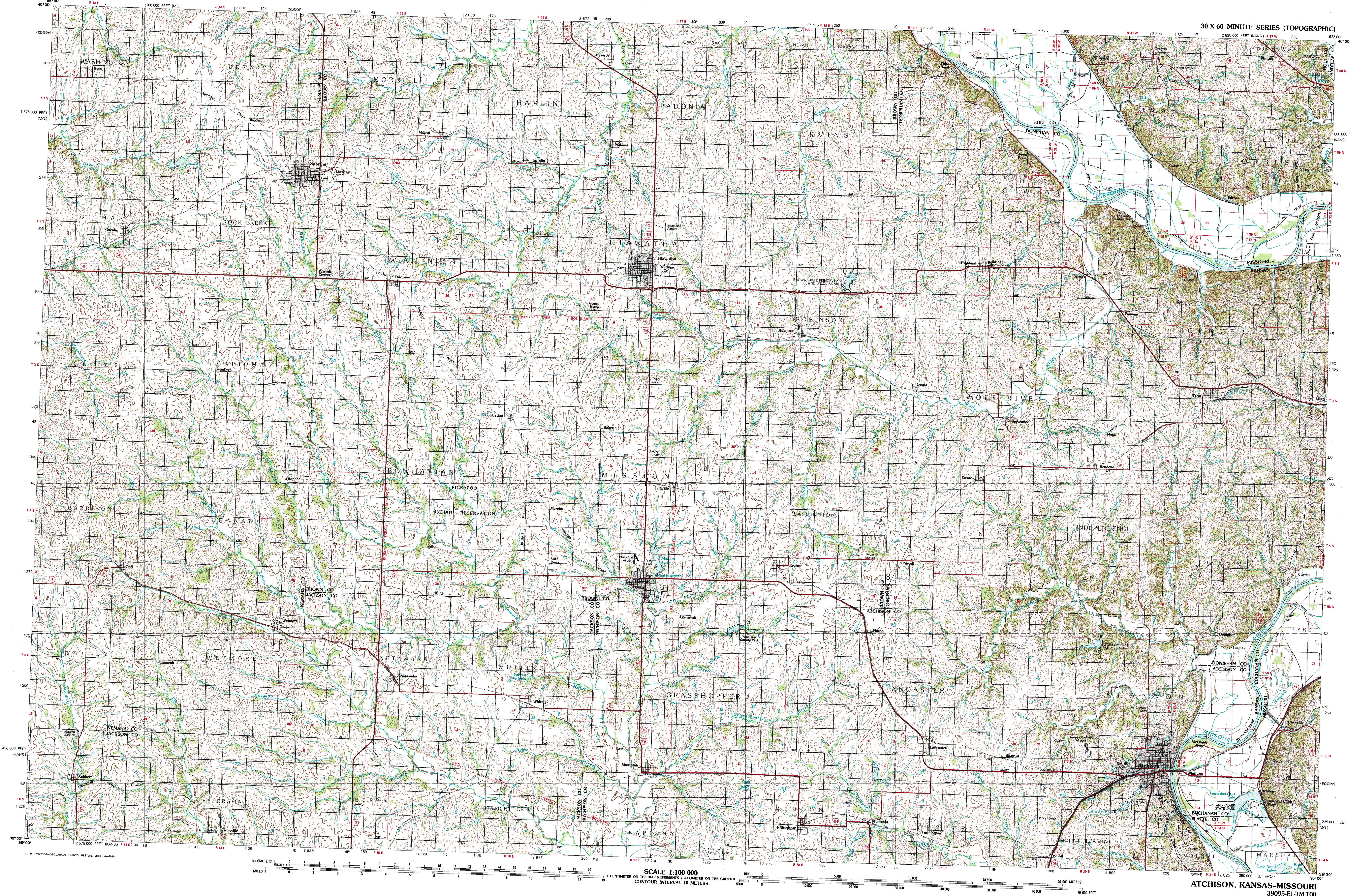


ATCHISON, KANSAS-MISSOURI



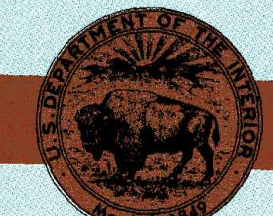
Atchison
KANSAS-MISSOURI

1:100 000-scale metric
topographic map



30 X 60 MINUTE QUADRANGLE
SHOWING

- Contours and elevations in meters
- Highways, roads and other manmade structures
- Water features
- Woodland areas
- Geographic names



GEOLOGICAL SURVEY

1990

Produced by the United States Geological Survey
Compiled from USGS 1:24 000-scale topographic maps dated 1959-1984. Planimetry revised from aerial photographs taken 1985 and other source data. Revised information not field checked. Map edited 1990.
Universal Transverse Mercator
25 000-foot grid ticks based on Kansas coordinate system, west zone
1927 North American Datum
To place on the predicted North American Datum 1983, move the projection lines 3 meters north and 22 meters east
There may be private inholdings within the boundaries of the National or State reservations shown on this map

CONTOUR INTERVAL 10 METERS
NATIONAL GEODETIC VERTICAL DATUM OF 1929
ELEVATIONS SHOWN TO THE NEAREST METER

THIS MAP COMPLIES WITH NATIONAL MAP ACCURACY STANDARDS

CONVERSION TABLE

Meters Feet

1	3.2808
2	6.5617
3	9.8425
4	13.1234
5	16.4042
6	19.6850
7	22.9658
8	26.2467
9	29.5275
10	32.8084

To convert meters to feet multiply by 3.2808

To convert feet to meters multiply by 0.3048

DECLINATION DIAGRAM

UTM grid convergence (GN) and 1980 magnetic declination (M) at center of map. Diagram is approximate.

ADJOINING MAPS

1 2

3 4

5 6

7 8

9 10

11 12

13 14

15 16

17 18

19 20

21 22

23 24

25 26

27 28

29 30

31 32

33 34

35 36

37 38

39 40

41 42

43 44

45 46

47 48

49 50

51 52

53 54

55 56

57 58

59 60

61 62

63 64

65 66

67 68

69 70

71 72

73 74

75 76

1 Bearcreek

2 Falls City

3 Mayville

4 Blue Rapids

5 Saint Joseph

6 Lawrence

7 Topeka

8 Kansas City

FOR SALE BY U.S. GEOLOGICAL SURVEY
DENVER, COLORADO 80225, OR RESTON, VIRGINIA 22092

Topographic Map Symbols

Primary highway, hard surface	
Secondary highway, hard surface	
Light duty road, principal street, hard or improved surface	
Other road or street, trail	
Route marker: interstate, U.S. State	
Railroad: standard gauge, narrow gauge	
Bridge: overpass, underpass	
Tunnel: road, railroad	
Bluff or area, locality, elevation	
Airport, landing field, landing strip	
National boundary	
State boundary	
County boundary	
National or State reservation boundary	
Land grant boundary	
U.S. public lands survey: range, township, section	
Range, township, section line: projected	
Power transmission line: pipeline	
Dam: dam with lock	
Cemetery, building	
Well: water well, spring	
Mine shaft: adit or cave; mine, quarry, gravel pit	
Campground, picnic area; U.S. location monument	
Ruin, cliff dwelling	
Distorted surface: strip mine, lava, sand	
Contours: index, intermediate, supplementary	
Bathymetric contours: index, intermediate	
Stream, lake: perennial, intermittent	
Repts, large and small; falls, large and small	
Area to be submerged; marsh, swamp	
Land subject to controlled inundation; woodland	
Soak, mangrove	
Orchard; vineyard	

A pamphlet describing topographic maps is available on request