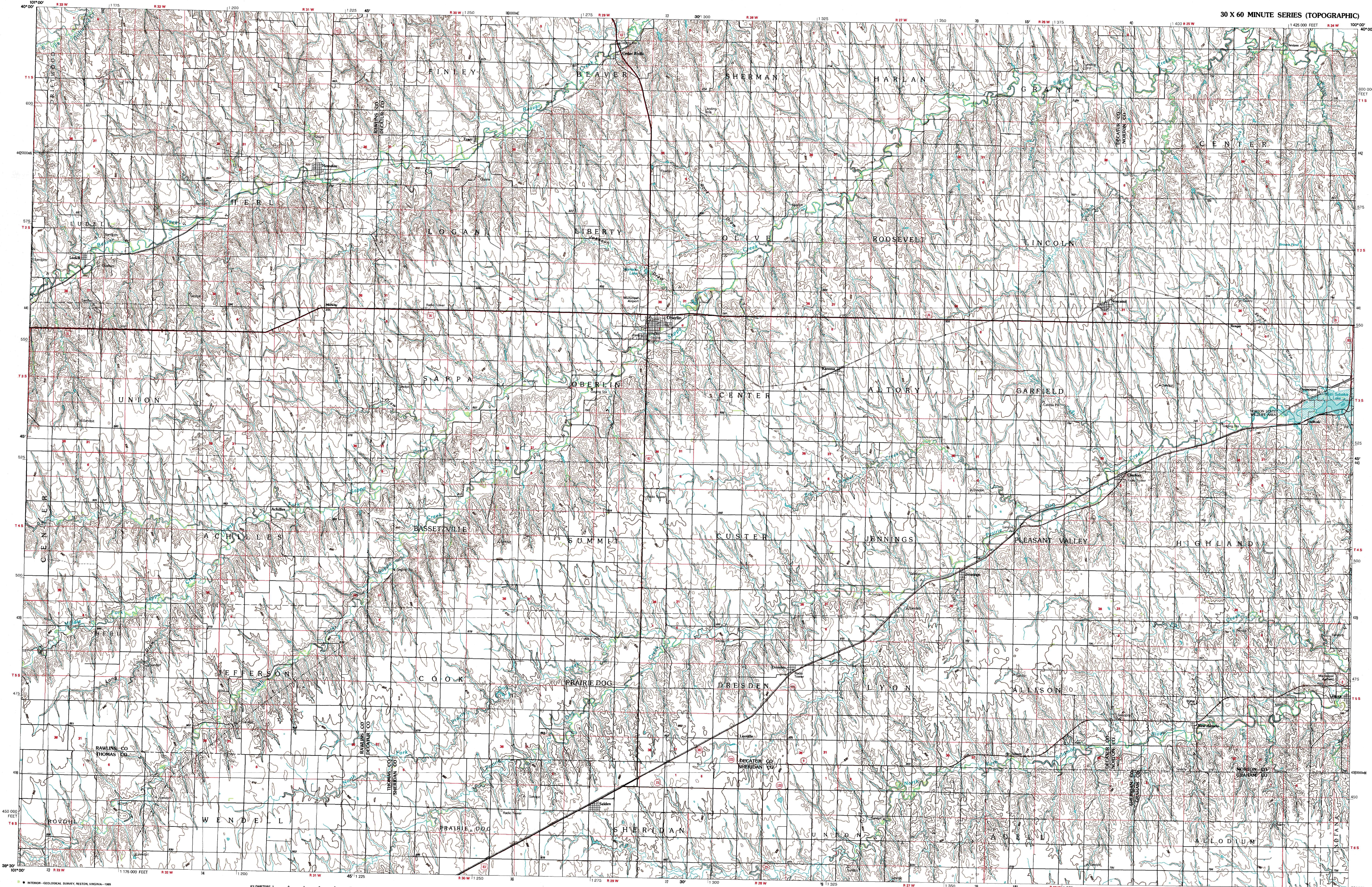


OBERLIN, KANSAS



Oberlin  
KANSAS

1:100 000-scale metric  
topographic map



30 X 60 MINUTE QUADRANGLE  
SHOWING

- Contours and elevations in meters
- Highways, roads and other manmade structures
- Water features
- Woodland areas
- Geographic names

GEOLOGICAL SURVEY

1985  
PHOTOINSPECTED 1987

Produced by the United States Geological Survey  
Compiled from USGS 1:24 000-scale topographic maps dated 1965-1978. Planimetry revised from aerial photographs taken 1981 and other source data. Revised information not field checked. Map edited 1985.  
Projection and 10 000-meter grid, zone 14, Universal Transverse Mercator  
25 000-foot grid ticks based on Kansas coordinate system, north zone 1927 North American Datum  
To place on the predicted North American Datum 1983, move the projection lines 4 meters north and 36 meters east  
There may be private inholdings within the boundaries of the National or State reservations shown on this map  
Map photoinspected using 1987 photographs  
No major culture or drainage changes found  
CONTOUR INTERVAL 10 METERS  
NATIONAL GEODETIC VERTICAL DATUM OF 1929  
ELEVATIONS SHOWN TO THE NEAREST METER

THIS MAP COMPLIES WITH NATIONAL MAP ACCURACY STANDARDS

CONVERSION TABLE

Meters	Feet
2	6.5617
4	13.1234
6	19.6851
8	26.2467
10	32.8084

To convert meters to feet multiply by 3.2808  
To convert feet to meters multiply by 0.3048

DECLINATION DIAGRAM

ADJOINING MAPS

1	2	3
4	5	6
7	8	

1 Beekmantown  
2 McCook  
3 Holdrege  
4 Saint Francis  
5 Norton  
6 Goodland  
7 Oakley  
8 Plainville

FOR SALE BY U.S. GEOLOGICAL SURVEY  
DENVER, COLORADO 80225, OR RESTON, VIRGINIA 22092

Topographic Map Symbols

- Primary highway, hard surface
- Secondary highway, hard surface
- Light duty road, principal street, hard or improved surface
- Other road or street, trail
- Route marker: Interstate, U.S. State
- Railroad: standard gauge, narrow gauge
- Bridge: overpass, underpass
- Turned: road, railroad
- Built up area, locality, elevation
- Airport: landing field, landing strip
- National boundary
- State boundary
- County boundary
- National or State reservation boundary
- Land grant boundary
- U.S. public lands survey: range, township, section
- Range, township, section line: protected
- Power transmission line: pipeline
- Dam, dam with lock
- Cemetery, building
- Windmill; water well; spring
- Mine shaft; adit or cave; mine, quarry; gravel pit
- Campground; picnic area; U.S. location monument
- Ruin; old dwelling
- Area to be submerged; marsh, swamp
- Disturbed surface: strip mine, lava, sand
- Contours: index intermediate, supplementary
- Bathymetric contours: index, intermediate
- Stream, lake: perennial, intermittent
- Roads, large and small; bolls, large and small
- Area to be submerged; marsh, swamp
- Land subject to controlled inundation; woodland
- Scrub; mangrove
- Orchard; vineyard

A pamphlet describing topographic maps is available on request

OBERLIN, KANSAS

39100-E1-TM-100

1985

PHOTOINSPECTED 1987